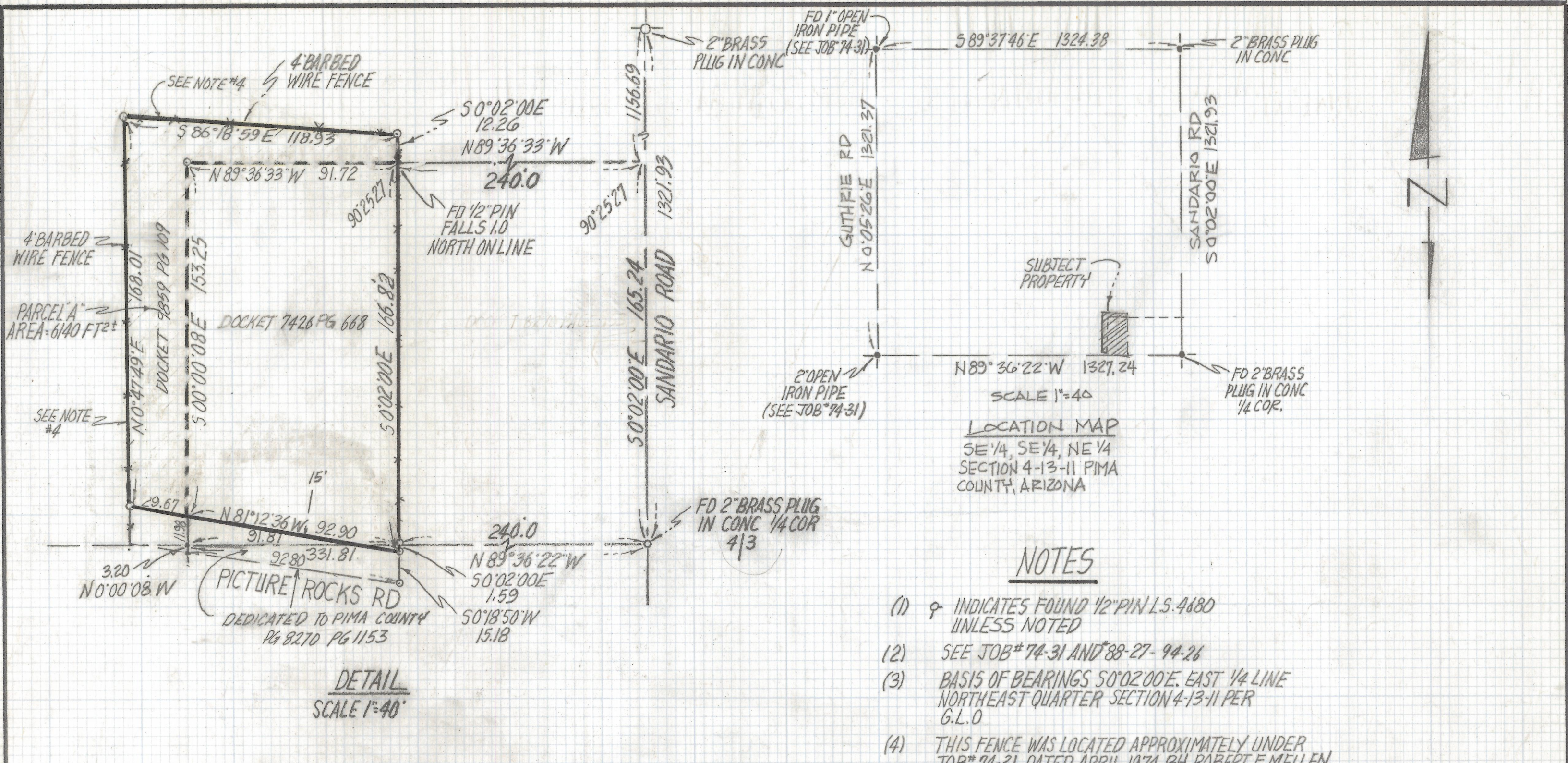


DISCLAIMER:

This unrecorded Record of Survey was donated to the City of Tucson. The City of Tucson provides this data for your personal use "as is." Additionally, the City of Tucson provides this information with the understanding that it is not guaranteed to be accurate, correct or complete and conclusions drawn from such information are the responsibility of the user.



SCALE 1"=40'
 LOCATION MAP
 SE 1/4, SE 1/4, NE 1/4
 SECTION 4-13-11 PIMA
 COUNTY, ARIZONA

NOTES

- (1) ♀ INDICATES FOUND 1/2" PIN L.S. 4680 UNLESS NOTED
- (2) SEE JOB# 74-31 AND 88-27-94-26
- (3) BASIS OF BEARINGS S0°02'00"E. EAST 1/4 LINE NORTHEAST QUARTER SECTION 4-13-11 PER G.L.O
- (4) THIS FENCE WAS LOCATED APPROXIMATELY UNDER JOB# 74-31 DATED APRIL 1974 BY ROBERT F. MELLEN REGISTERED LAND SURVEYOR

DETAIL
 SCALE 1"=40'

RESULTS OF SURVEY

OF A PORTION OF THE SOUTHEAST QUARTER OF THE SOUTHEAST QUARTER OF THE NORTHEAST QUARTER SECTION 4 TOWNSHIP 13 SOUTH RANGE 11 EAST GILA SALT RIVER BASE AND MERIDIAN PIMA COUNTY ARIZONA



ROBERT F. MELLEN
 REGISTERED LAND SURVEYOR
 TUCSON, ARIZONA
 JOB# 95-3

REVISED 1-11-95 COMBINE PARCELS