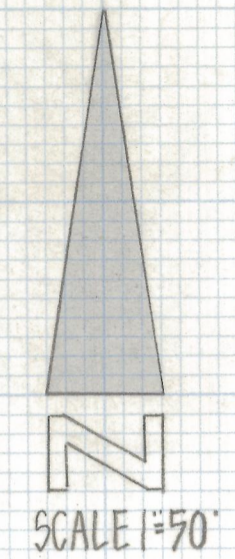
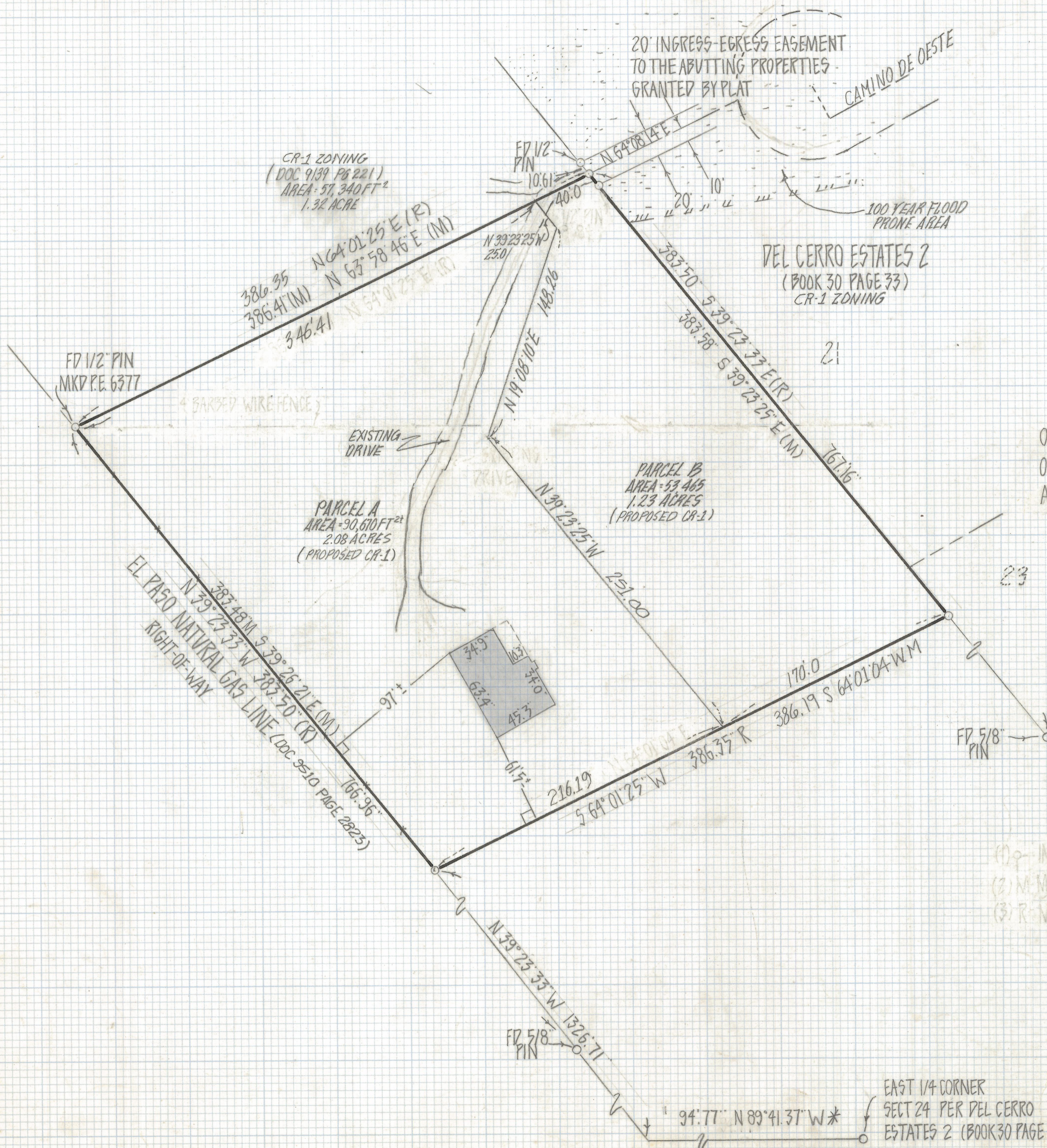


DISCLAIMER:

This unrecorded Record of Survey was donated to the City of Tucson. The City of Tucson provides this data for your personal use "as is." Additionally, the City of Tucson provides this information with the understanding that it is not guaranteed to be accurate, correct or complete and conclusions drawn from such information are the responsibility of the user.



**RESULTS OF SURVEY
AND
REZONING**

OF A PORTION OF THE EAST HALF OF THE NORTHEAST QUARTER
OF SECTION 24 TOWNSHIP 13 SOUTH RANGE 12 EAST GILA
AND SALT RIVER BASE AND MERIDIAN PIMA COUNTY ARIZONA

NOTES

- (1) \circ INDICATES SET 1/2\" PIN L.S. 4680 UNLESS NOTED
- (2) M- MEASURED
- (3) R- MAP OR DEED RECORD
- (4) * BASIS OF BEARINGS $N 89^{\circ} 41' 37'' W$ SOUTH LINE OF THE NE 1/4 SECTION 24-13-12 PER DOC 5837 PAGE 578
- (5) SEE JOB # 80-122

(1) \circ INDICATES SET 1/2\" PIN MKD L.S. 4680 UNLESS NOTED
(2) M- MEASURED
(3) R- MAP RECORD

EAST 1/4 CORNER
SECT 24 PER DEL CERRO
ESTATES 2 (BOOK 30 PAGE 33)

REVISION	DATE	ROBERT P. MELLEN REGISTERED LAND SURVEYOR 1250 W. MOHAVE ST TUCSON, ARIZONA 85705 (602) 888-1012
	DRAWN BY: EMT CK. BY: RFM DATE: 2-8-95 JOB No 95-10 SHEET 1 OF 2	