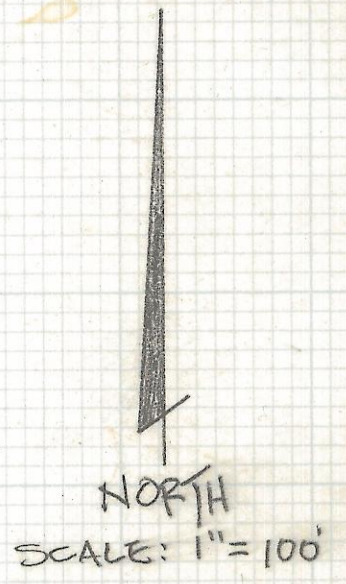
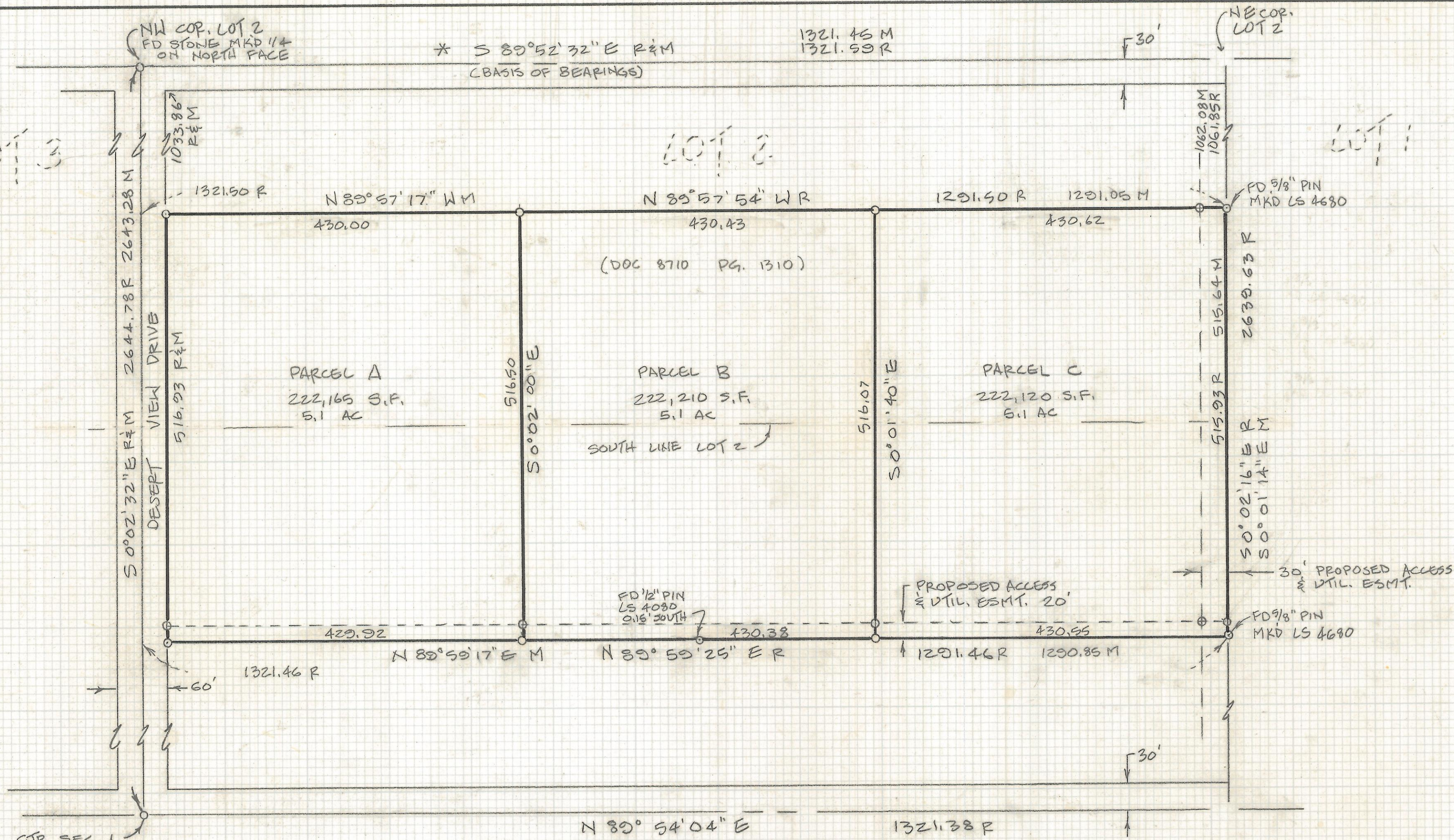


DISCLAIMER:

This unrecorded Record of Survey was donated to the City of Tucson. The City of Tucson provides this data for your personal use "as is." Additionally, the City of Tucson provides this information with the understanding that it is not guaranteed to be accurate, correct or complete and conclusions drawn from such information are the responsibility of the user.



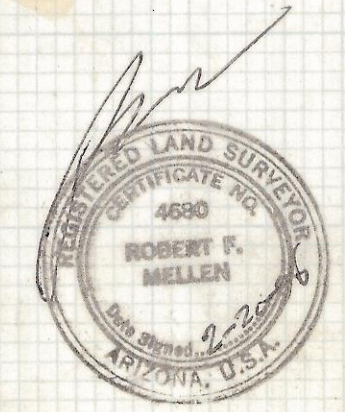
CTR. SEC. 1
FD ACP MKD PE 1270
FD 1/2" PIN MKD LS 11,373
0.3' NORTH, 0.1' WEST

NOTES

- 1) \circ INDICATES 1/2" PIN MKD LS 4680 SET UNLESS NOTED
- 2) R MAP OF DEED RECORD
- 3) M MEASURED
- 4) * BASIS OF BEARINGS - S 89° 52' 32" E FOR THE NORTH LINE OF THE NE 1/4 OF SECTION 1 T-13-S, R-11-E, PER BK 1 PG 47 RECORD OF SURVEY
- 5) SEE JOB # 76-39A & BK 1 PG 47 RECORD OF SURVEY
- 6) SEE BK 4 PG 11 RECORD OF SURVEY BY TOM LUCKOW LAND SURVEYOR, INC., AUG. 1981
- 7) THIS SURVEY BASED ON CORRECTED DEED RECORDED IN DOCKET BOOK 8710 AT PAGE 1310 IN THE RECORDS OF THE PIMA COUNTY RECORDER

RESULTS OF SURVEY

OF A PORTION OF THE NORTHEAST QUARTER OF SECTION 1 OF TOWNSHIP 13 SOUTH RANGE 11 EAST GILA AND SALT RIVER BASE AND MERIDIAN, PIMA COUNTY, ARIZONA.



ROBERT F. MELLEN
REGISTERED LAND SURVEYOR
TUCSON, ARIZONA
JOB 95-12