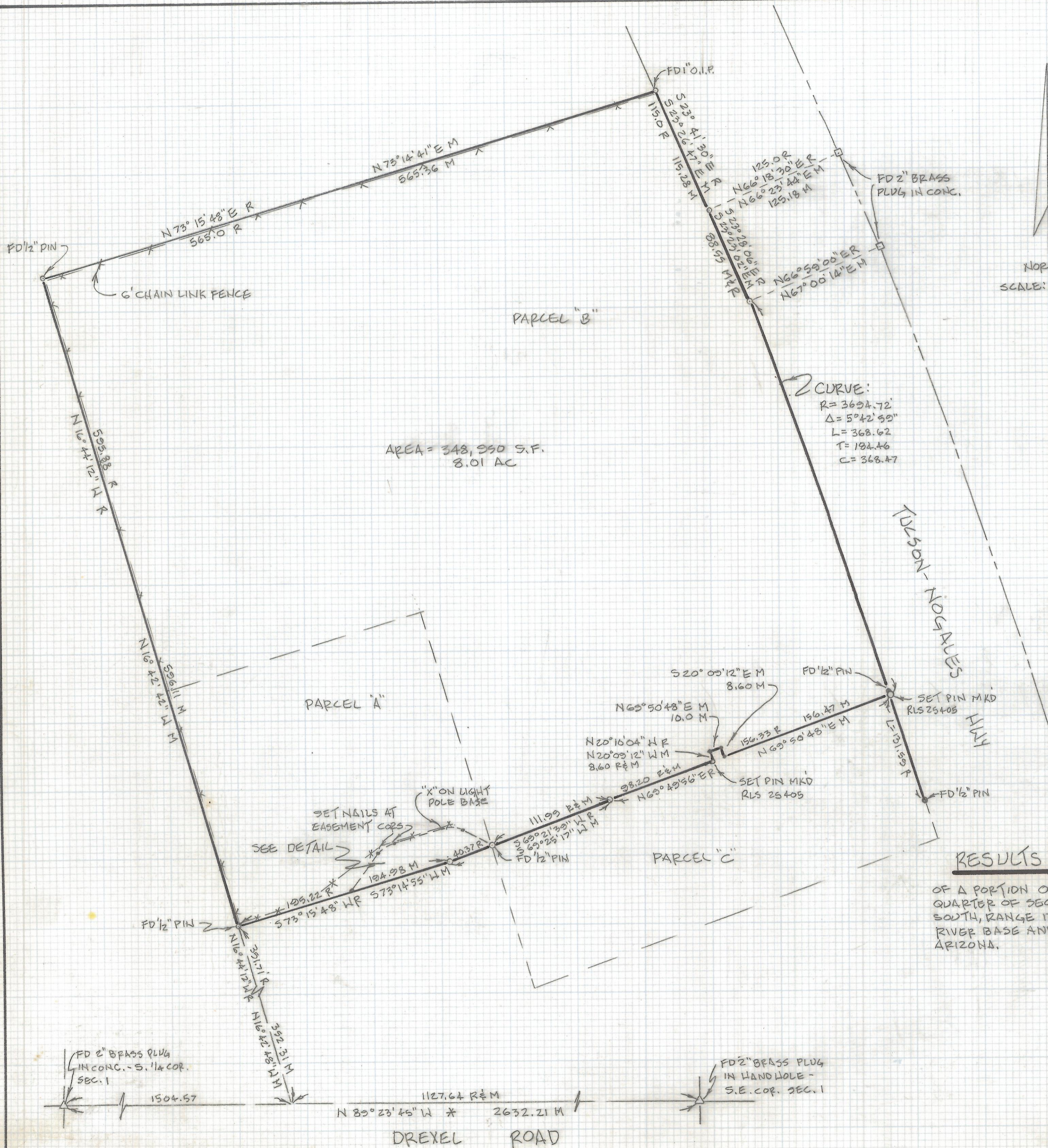


# **DISCLAIMER:**

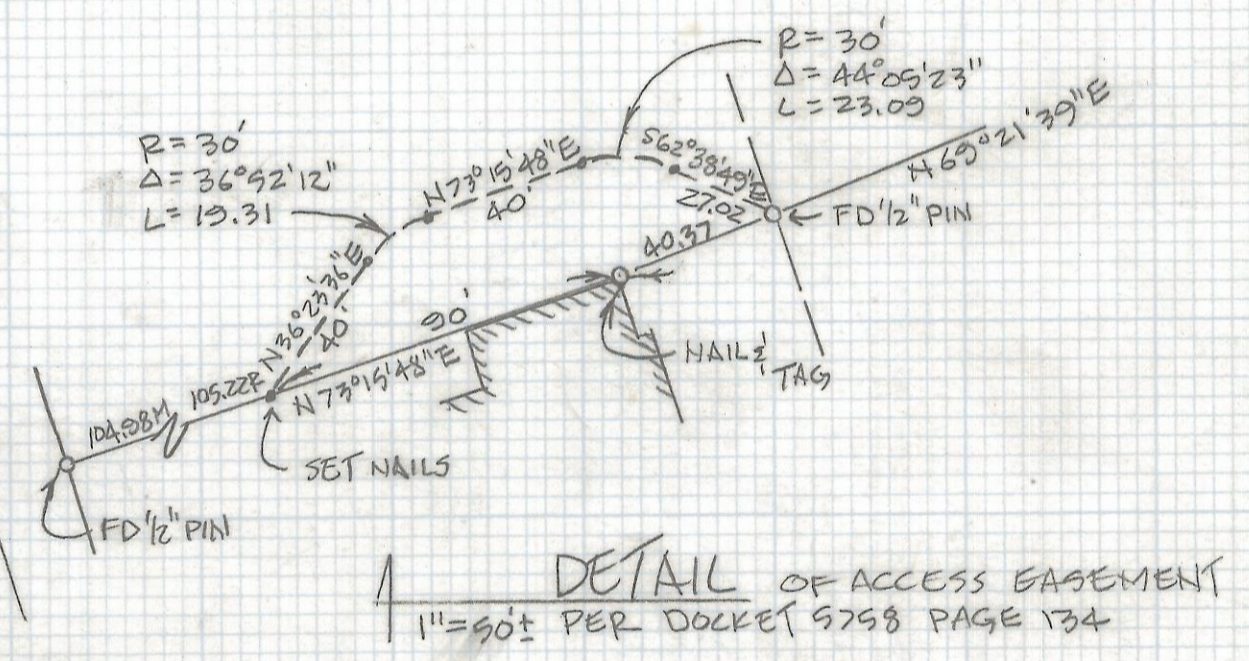
**This unrecorded Record of Survey was donated to the City of Tucson. The City of Tucson provides this data for your personal use "as is." Additionally, the City of Tucson provides this information with the understanding that it is not guaranteed to be accurate, correct or complete and conclusions drawn from such information are the responsibility of the user.**



NORTH  
SCALE: 1"=60'

**NOTES:**

- 1)  $\phi$  INDICATES NAIL  $\frac{1}{2}$ " TAG MKD RLS 25405 SET UNLESS NOTED
- 2) R - MAP OR DEED RECORD
- 3) M - MEASURED
- 4) OIP - OPEN IRON PIPE
- 5) \* BASIS OF BEARINGS - SOUTH LINE OF SECTION 1, T-15-S, R-13-E, AS SHOWN IN DOCKET BOOK 10047 AT PAGE 1905 DATED MAY 19, 1995
- 6) NO TITLE REPORT FURNISHED



**RESULTS OF SURVEY**

OF A PORTION OF THE SOUTHEAST QUARTER OF SECTION 1, TOWNSHIP 15 SOUTH, RANGE 13 EAST, GILA AND SALT RIVER BASE AND MERIDIAN, PIMA COUNTY, ARIZONA.



*Everett M. Trueblood*

EVERETT M. TRUEBLOOD  
REGISTERED LAND SURVEYOR  
TUCSON, ARIZONA  
JOB 95-14