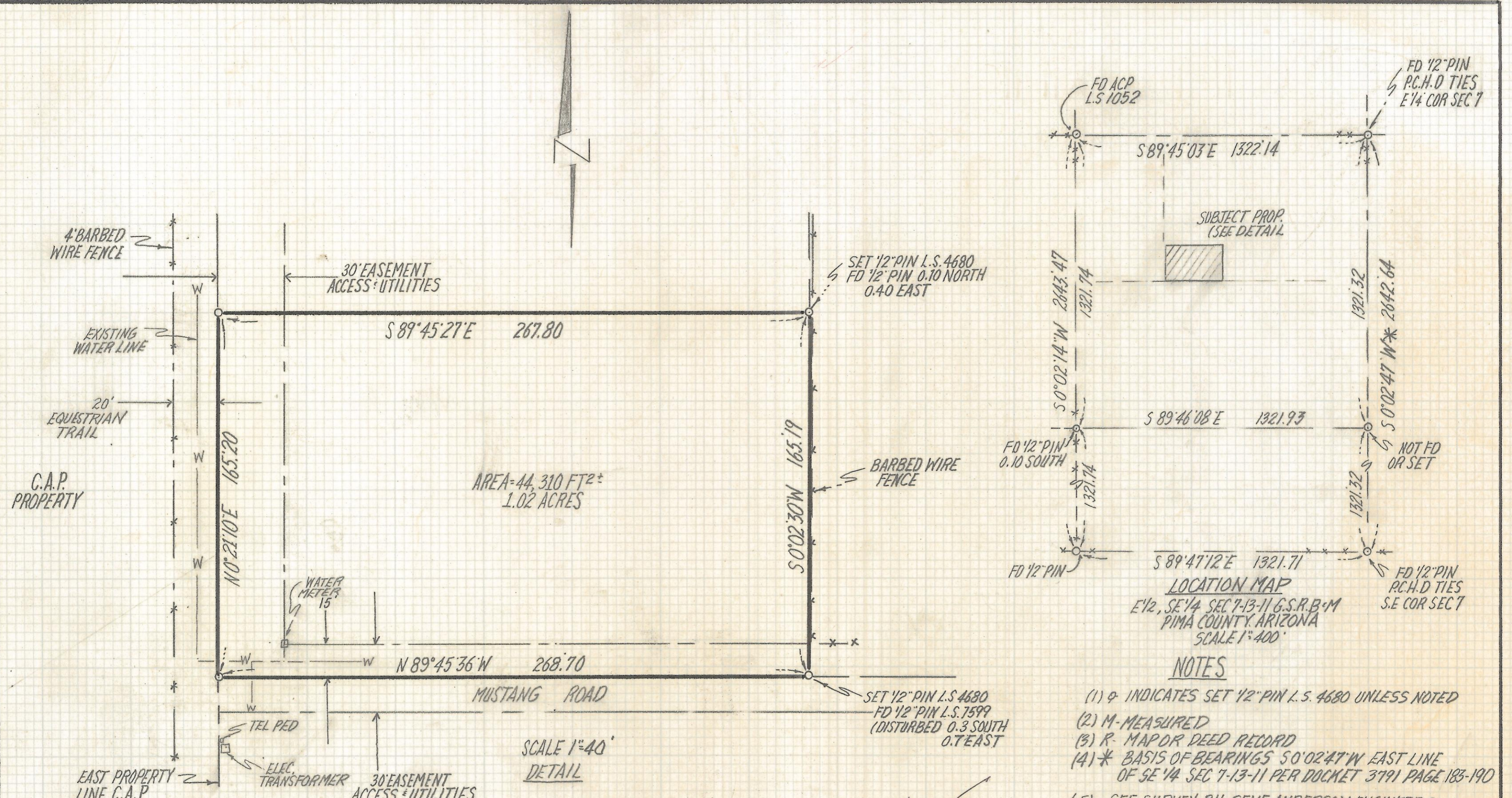


DISCLAIMER:

This unrecorded Record of Survey was donated to the City of Tucson. The City of Tucson provides this data for your personal use "as is." Additionally, the City of Tucson provides this information with the understanding that it is not guaranteed to be accurate, correct or complete and conclusions drawn from such information are the responsibility of the user.



LOCATION MAP
E 1/2, SE 1/4 SEC 7-13-11 G.S.R.B.M
PIMA COUNTY, ARIZONA
SCALE 1"=400'

NOTES

- (1) ♀ INDICATES SET 1/2" PIN L.S. 4680 UNLESS NOTED
- (2) M- MEASURED
- (3) R- MAP OR DEED RECORD
- (4) * BASIS OF BEARINGS 50'02'47" W EAST LINE OF SE 1/4 SEC 7-13-11 PER DOCKET 3791 PAGE 183-190
- (5) SEE SURVEY BY GENE ANDERSON ENGINEERS OF SEC 7-13-11 RECORDED IN BOOK 3791 PAGES 183-190

RESULTS OF SURVEY

OF A PORTION OF THE SOUTH HALF OF THE SOUTHEAST QUARTER OF THE NORTHWEST QUARTER OF THE NORTHEAST QUARTER OF THE SOUTHEAST QUARTER OF SECTION 7, TOWNSHIP 13 SOUTH RANGE 11 EAST G.S.R.B.M. PIMA COUNTY ARIZONA



ROBERT F. MELLEN
REGISTERED LAND SURVEYOR
TUCSON, ARIZONA
JOB # 95-16