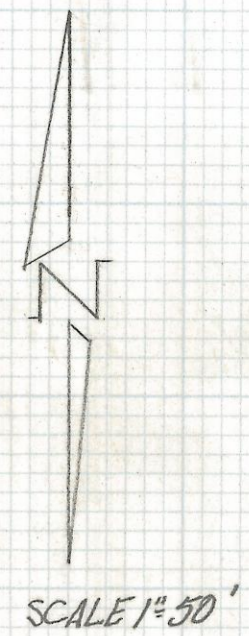
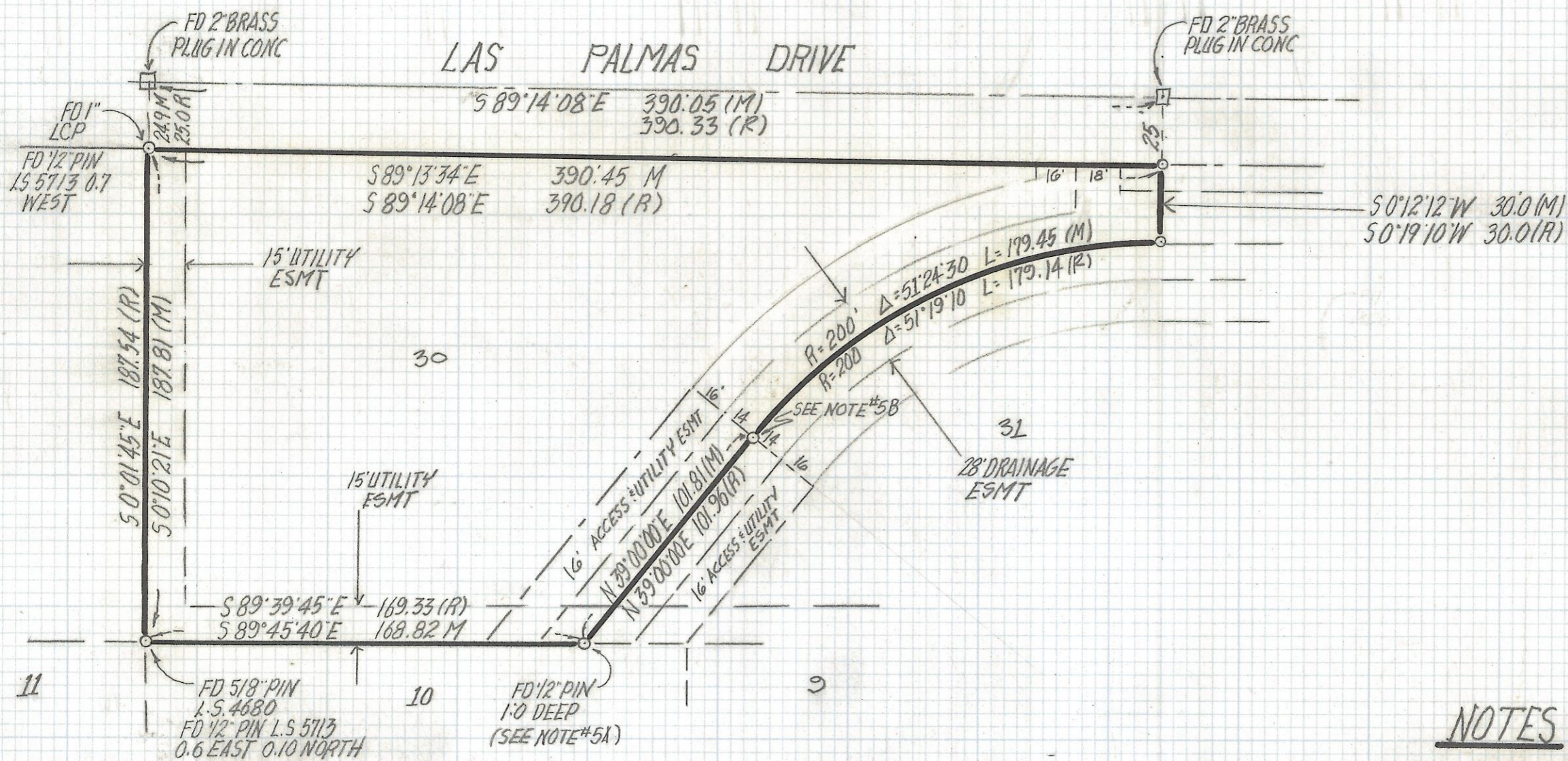


DISCLAIMER:

This unrecorded Record of Survey was donated to the City of Tucson. The City of Tucson provides this data for your personal use "as is." Additionally, the City of Tucson provides this information with the understanding that it is not guaranteed to be accurate, correct or complete and conclusions drawn from such information are the responsibility of the user.



RESULTS OF SURVEY

OF LOT 30 ORACLE FOOTHILLS ESTATES N° 5 AS RECORDED IN BOOK 16 OF MAPS AND PLATS AT PAGE 28 IN THE OFFICE OF THE PIMA COUNTY RECORDER PIMA COUNTY ARIZONA.

NOTES

- 1) ♀ INDICATES SET 1/2" PIN L.S. 4680 UNLESS NOTED
- 2) M - MEASURED
- 3) R - MAP OR DEED RECORD
- 4) * BASIS OF BEARINGS S 89° 14' 08" E CENTERLINE LAS PALMAS DR ORACLE FOOTHILLS EST. NO 5 BOOK 16 PAGE 28 M-P
- 5) A FOUND 1/2" PIN L.S. 5713 2.3° NORTH 1.0 EAST FROM S.E CORNER NOT ACCEPTED
 B FOUND 1/2" PIN L.S. 5713 3.5° NORTH OF PC NOT ACCEPTED



ROBERT F. MELLEN
 REGISTERED LAND SURVEYOR
 TUCSON, ARIZONA
 JOB #95-31