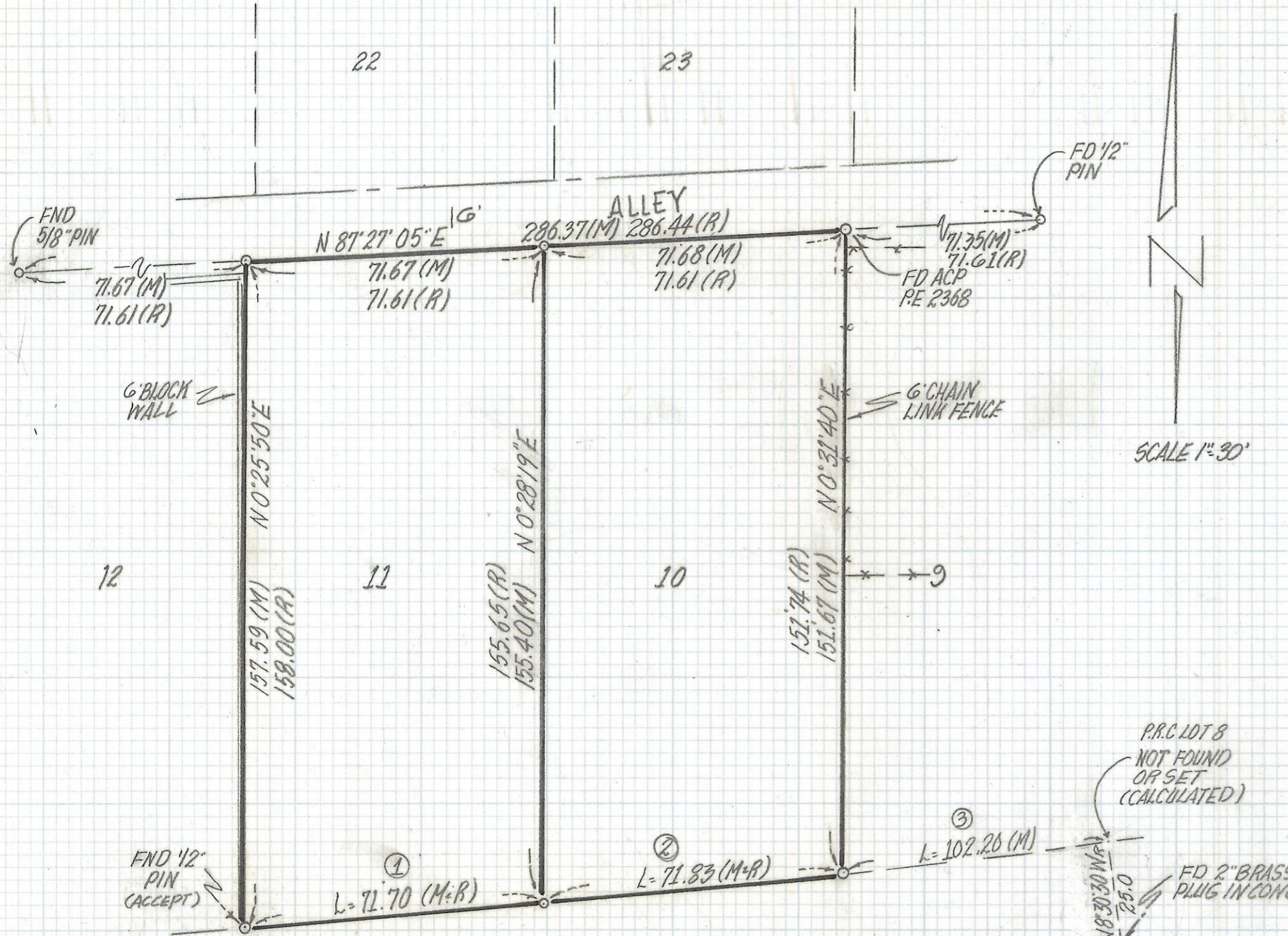


DISCLAIMER:

This unrecorded Record of Survey was donated to the City of Tucson. The City of Tucson provides this data for your personal use "as is." Additionally, the City of Tucson provides this information with the understanding that it is not guaranteed to be accurate, correct or complete and conclusions drawn from such information are the responsibility of the user.

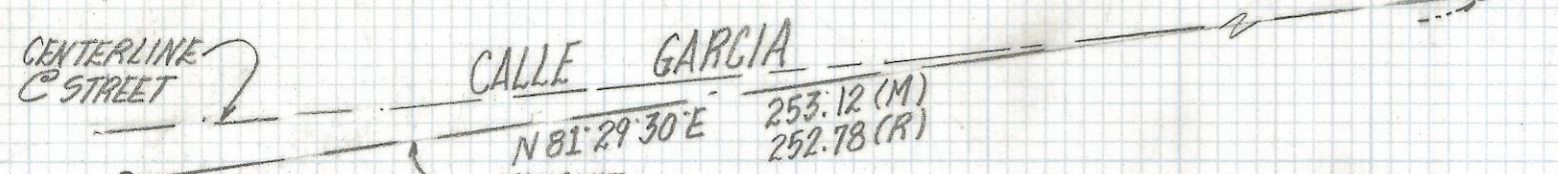


CURVE DATA					
N°	RADIUS	DELTA	TANGENT	LENGTH	CHORD
1	3373.22	1°13'04"	35.85	71.70	71.70
2	3373.22	1°13'12"	35.92	71.83	71.83
3	3373.22	1°44'09"	51.10	102.20	102.20

SCALE 1"=30'

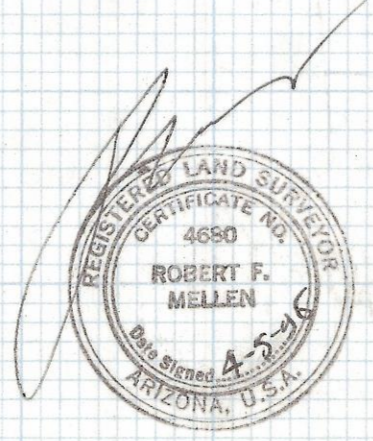
NOTES

- (1) q INDICATES SET 1/2" PIN MKD L.S. 4680 UNLESS NOTED
- (2) M-MEASURED
- (3) R-MAP OR DEED RECORD
- (4) * BASIS OF BEARINGS N 81° 29' 30" E TANGENT LINE OF CURVE ON CALLE GARCIA PER MISSION MANOR # 8 PER BOOK 10 PAGE 27 MAPS AND PLATS
- (5) THIS CURVE SHOWN ON MISSION MANOR # 8 IS NOT MATHEMATICALLY CORRECT, ALSO BLOCK 36 MISSION MANOR DOES NOT MATHEMATICALLY CLOSE.



RESULTS OF SURVEY

OF LOTS 10 AND 11 BLOCK 36 MISSION MANOR # 8 AS RECORDED IN BOOK 10 OF MAPS AND PLATS PAGE 27 IN THE OFFICE OF THE PIMA COUNTY RECORDER PIMA COUNTY ARIZONA



ROBERT F. MELLEN
REGISTERED LAND SURVEYOR
TUCSON, ARIZONA
JOB # 96-32