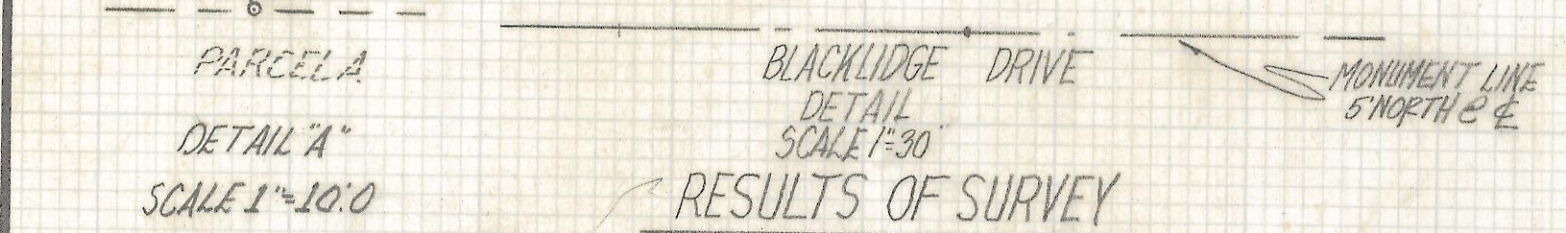
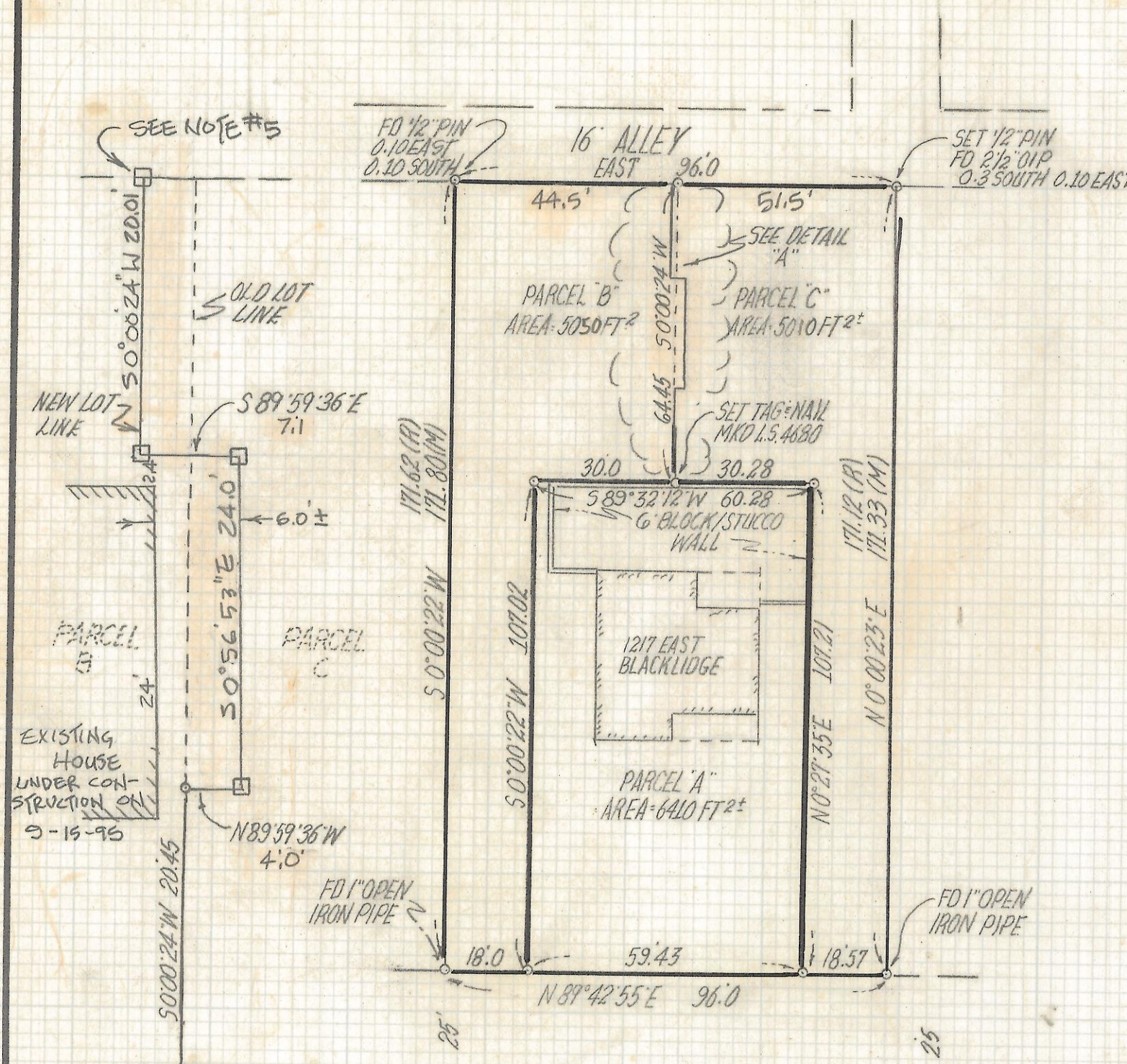


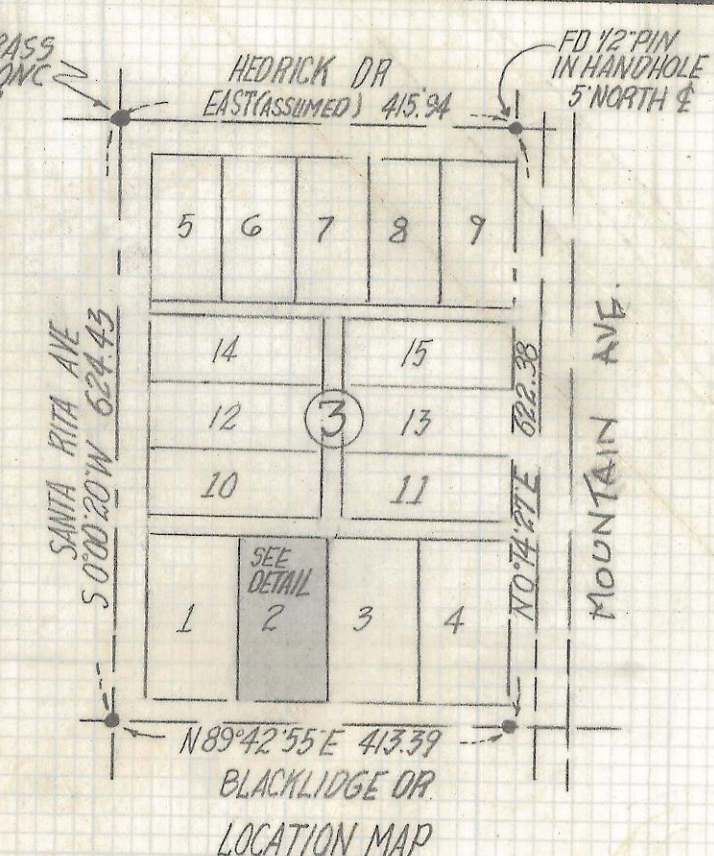
DISCLAIMER:

This unrecorded Record of Survey was donated to the City of Tucson. The City of Tucson provides this data for your personal use "as is." Additionally, the City of Tucson provides this information with the understanding that it is not guaranteed to be accurate, correct or complete and conclusions drawn from such information are the responsibility of the user.



RESULTS OF SURVEY
 OF LOT 2 BLOCK 3 CATALINA POULTRY ACRES #3 AS RECORDED
 IN BOOK 6 OF MAPS AND PLATS AT PAGE 87 IN THE OFFICE OF
 THE PIMA COUNTY RECORDER PIMA COUNTY, ARIZONA

- NOTES**
- (1) ◊ INDICATES SET 1/2" PIN L.S. 4680 UNLESS NOTED
 - (2) M-MEASURED
 - (3) R-MAP OR DEED RECORD
 - (4) * BASIS OF BEARINGS EAST (ASSUMED CENTERLINE HEDRICK DRIVE)
 - (5) ◻ THESE CORNERS WERE NOT SET AS OF 9-15-95



LOCATION MAP
 BLOCK 3 CATALINA POULTRY ACRES #3
 BOOK 6 PAGE 87 MAPS & PLATS
 PIMA COUNTY, ARIZ.
 SCALE 1"=200'



ROBERT F. MELLEN
 REGISTERED LAND SURVEYOR
 TUCSON, ARIZONA
 JOB # 95-34

REVISED LOT LINE & LEGAL DESCRIPTION 9-13-95
 REVISED LOT LINE & LEGAL DESCRIPTION 9-8-95