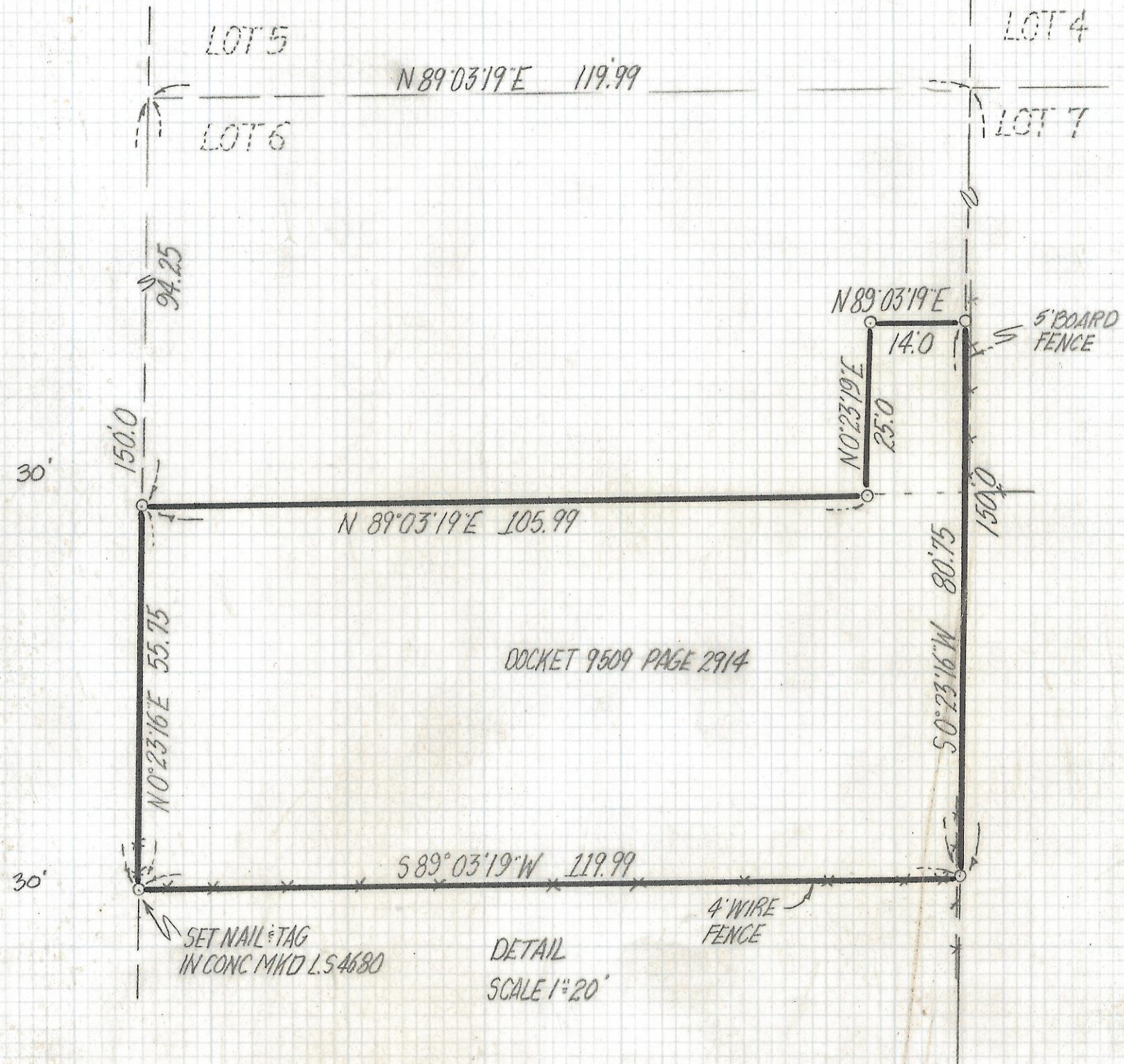


DISCLAIMER:

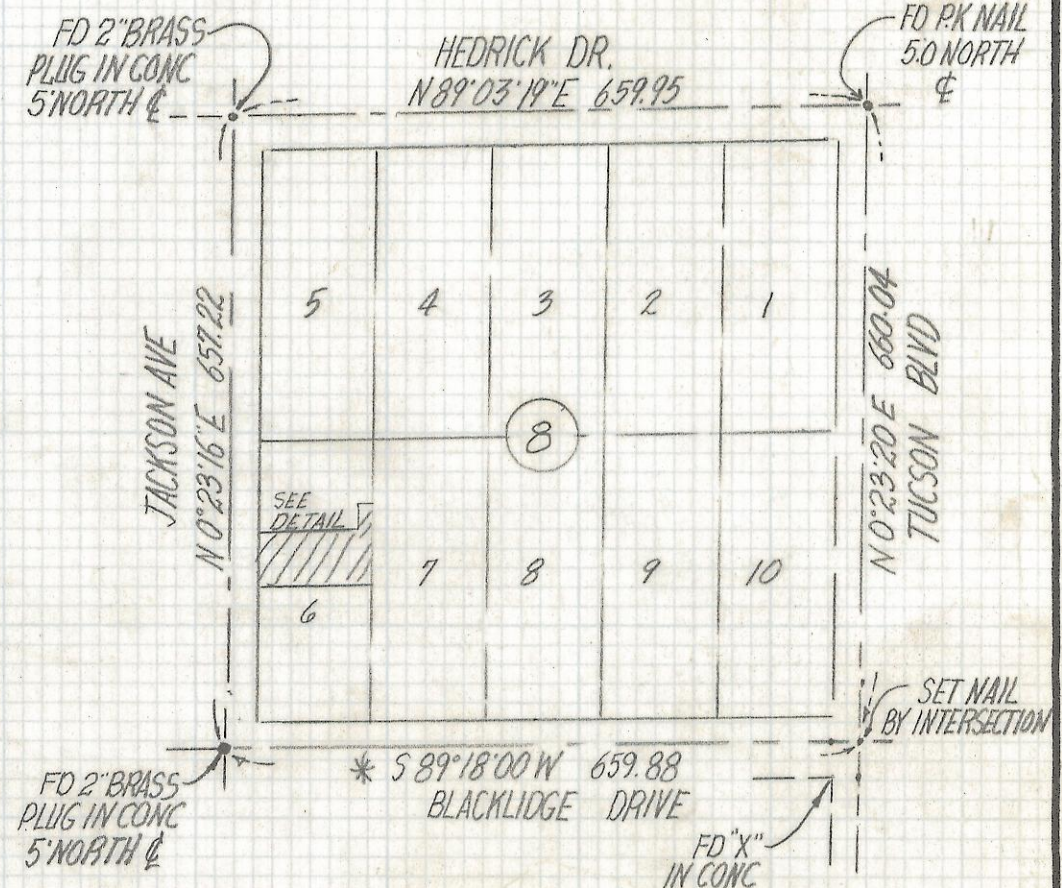
This unrecorded Record of Survey was donated to the City of Tucson. The City of Tucson provides this data for your personal use "as is." Additionally, the City of Tucson provides this information with the understanding that it is not guaranteed to be accurate, correct or complete and conclusions drawn from such information are the responsibility of the user.

JACKSON AVE.



RESULTS OF SURVEY

OF A PORTION OF LOT 6 BLOCK 8 CAMPBELL ACRES AS RECORDED IN BOOK 6 OF MAPS AND PLATS AT PAGE 49 IN THE OFFICE OF THE PIMA COUNTY RECORDER PIMA COUNTY ARIZONA.



NOTES

- (1) ♀ INDICATES SET 1/2" PIN MKD L.S. 4680 UNLESS NOTED
- (2) M - MEASURED
- (3) R - MAP OR DEED RECORD
- (4) * BASIS OF BEARINGS S 89°18'00"W CENTERLINE BLACKLIDGE DR. PER CAMPBELL AVE ACRES BK 6 PG 49 M&P



ROBERT F. MELLEM
REGISTERED LAND SURVEYOR
TUCSON, ARIZONA
JOB # 95-40