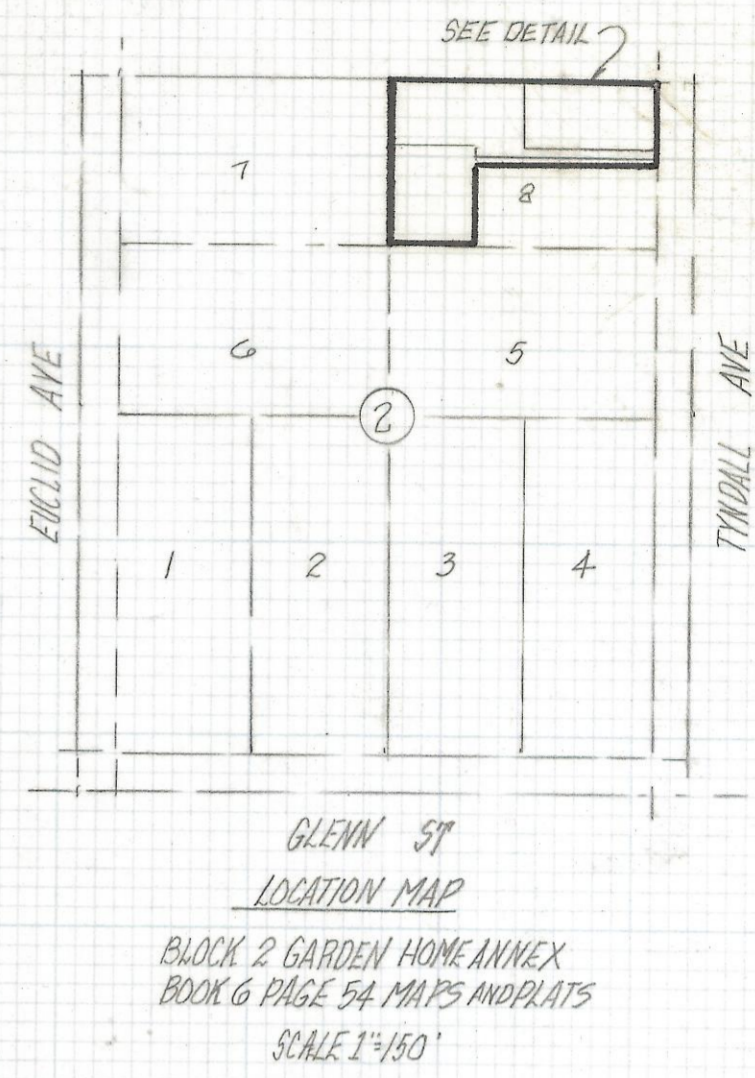
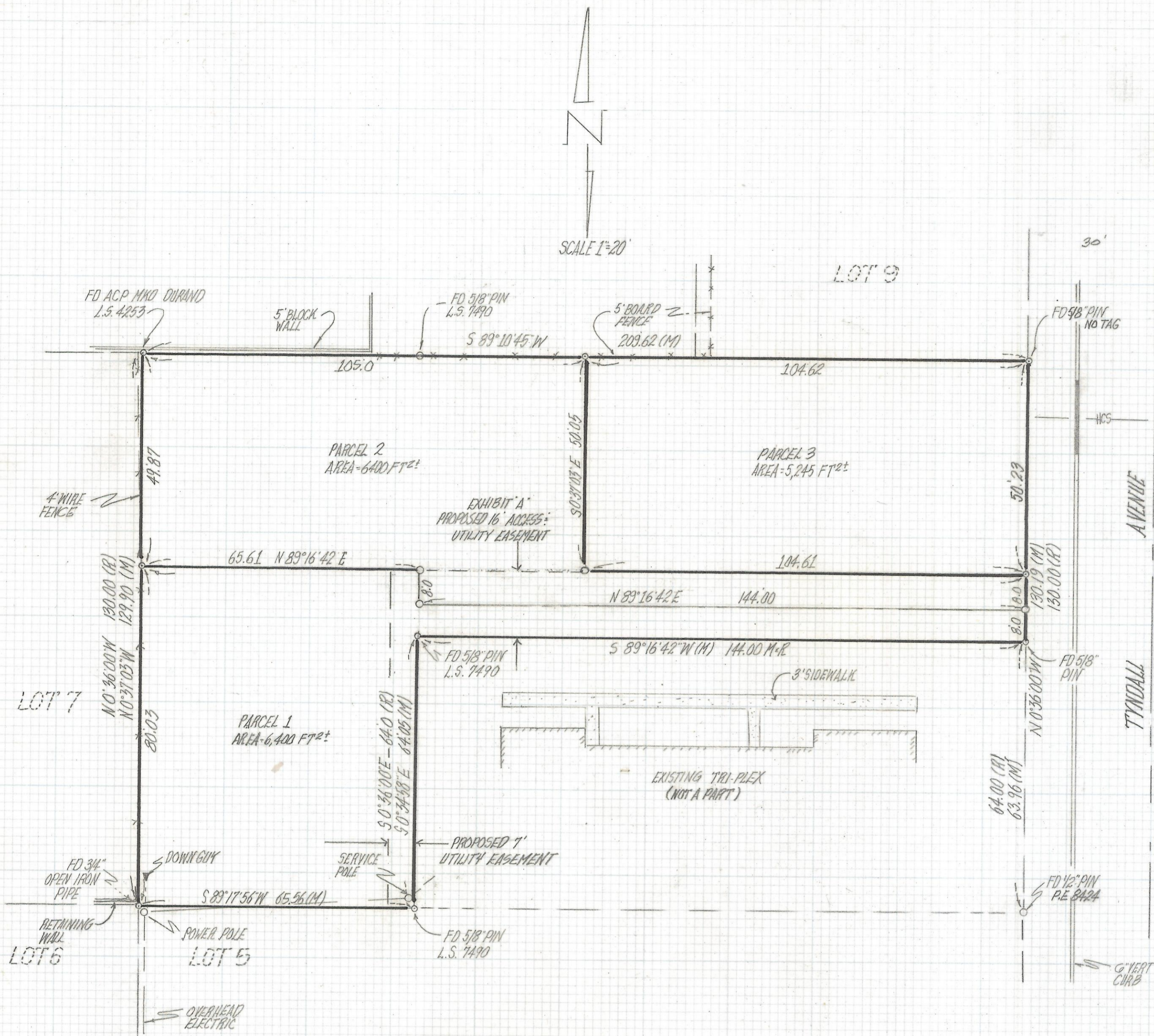


# **DISCLAIMER:**

**This unrecorded Record of Survey was donated to the City of Tucson. The City of Tucson provides this data for your personal use "as is." Additionally, the City of Tucson provides this information with the understanding that it is not guaranteed to be accurate, correct or complete and conclusions drawn from such information are the responsibility of the user.**



NOTES

- (1) ♀ INDICATES SET 1/2" PIN MKD L.S. 4680 UNLESS NOTED
- (2) M- MEASURED
- (3) R- MAP OR DEED RECORD
- (4) \* BASIS OF BEARINGS 50°36'00" E CENTERLINE TYNDALL AVENUE PER GARDEN HOME ANNEX BOOK 6 PAGE 54 MAPS AND PLATS
- (5) SEE SURVEY BY L.S. 7490 DATED 1-21-83 (COPY IN THIS OFFICE)

RESULTS OF SURVEY

OF A PORTION OF LOT 8 BLOCK 2 GARDEN HOMES ANNEX AS RECORDED IN BOOK 6 OF MAPS AND PLATS AT PAGE 54 IN THE OFFICE OF THE PIMA COUNTY RECORDER PIMA COUNTY ARIZONA



ROBERT F. MELLEN  
REGISTERED LAND SURVEYORS  
TUCSON, ARIZONA  
JOB # 95-49