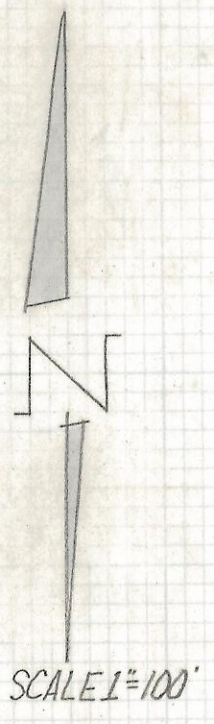
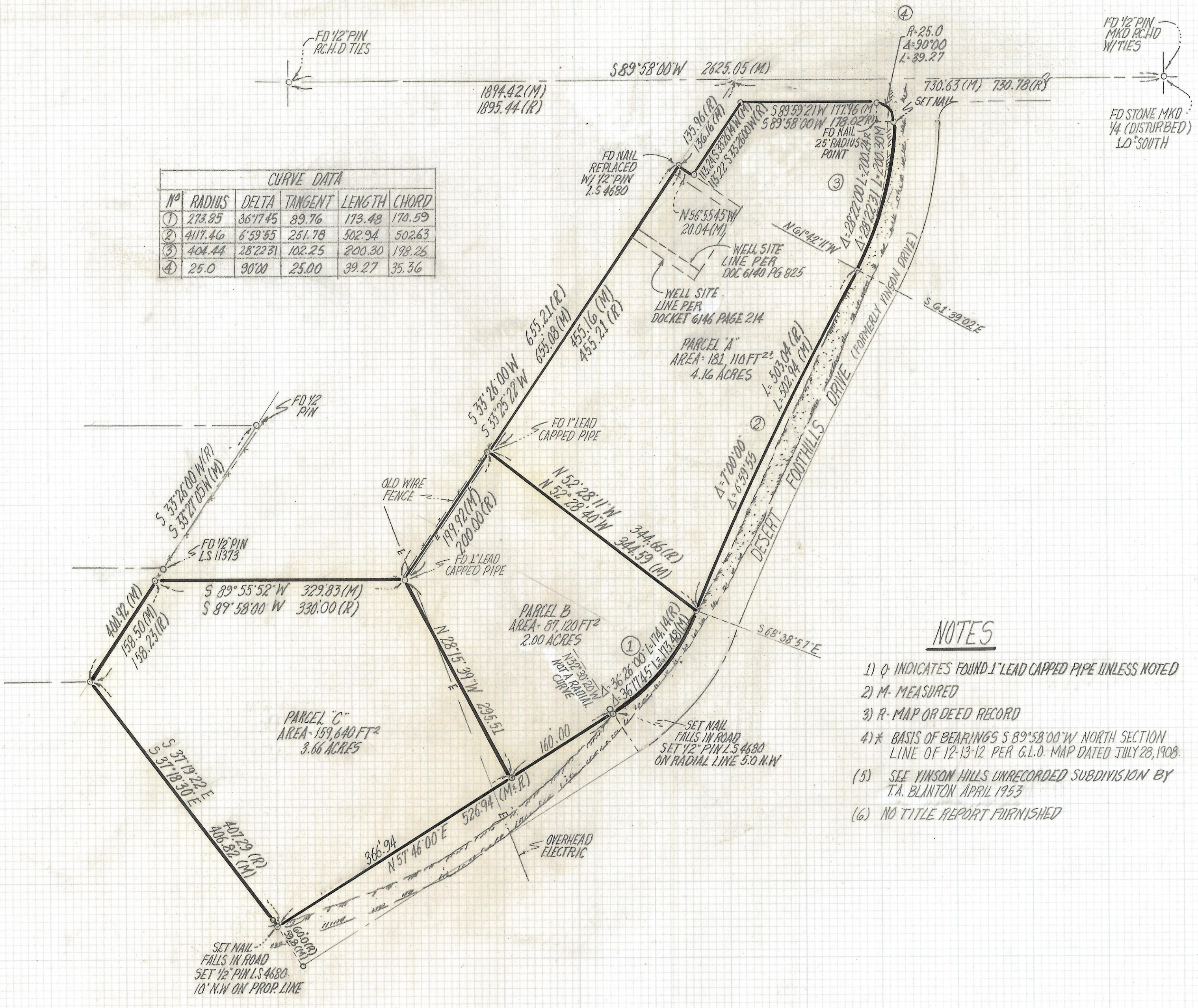


# **DISCLAIMER:**

**This unrecorded Record of Survey was donated to the City of Tucson. The City of Tucson provides this data for your personal use "as is." Additionally, the City of Tucson provides this information with the understanding that it is not guaranteed to be accurate, correct or complete and conclusions drawn from such information are the responsibility of the user.**



CURVE DATA					
Nº	RADIUS	DELTA	TANGENT	LENGTH	CHORD
①	273.85	36°17'45"	89.76	173.48	170.59
②	4117.46	6°59'55"	251.78	502.94	502.63
③	404.44	28°22'31"	102.25	200.30	198.26
④	25.0	90°00'	25.00	39.27	35.36



**NOTES**

- 1) Q INDICATES FOUND 1" LEAD CAPPED PIPE UNLESS NOTED
- 2) M- MEASURED
- 3) R- MAP OR DEED RECORD
- 4) \* BASIS OF BEARINGS S 89° 58' 00" W NORTH SECTION LINE OF 12-13-12 PER G.L.O. MAP DATED JULY 28, 1908
- 5) SEE VINSON HILLS UNRECORDED SUBDIVISION BY T.A. BLINTON APRIL 1953
- 6) NO TITLE REPORT FURNISHED

**RESULTS OF SURVEY**

OF A PORTION OF THE NORTHWEST QUARTER OF SECTION 12 TOWNSHIP 13 SOUTH RANGE 12 EAST GILA AND SALT RIVER BASE AND MERIDIAN PIMA COUNTY ARIZONA.



ROBERT F. MELLEN  
REGISTERED LAND SURVEYOR  
TUCSON, ARIZONA  
JOB# 95-56

Z-2017-038