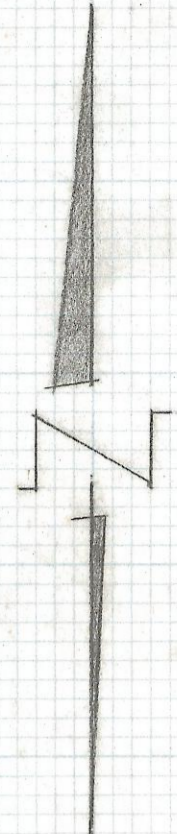


DISCLAIMER:

This unrecorded Record of Survey was donated to the City of Tucson. The City of Tucson provides this data for your personal use "as is." Additionally, the City of Tucson provides this information with the understanding that it is not guaranteed to be accurate, correct or complete and conclusions drawn from such information are the responsibility of the user.



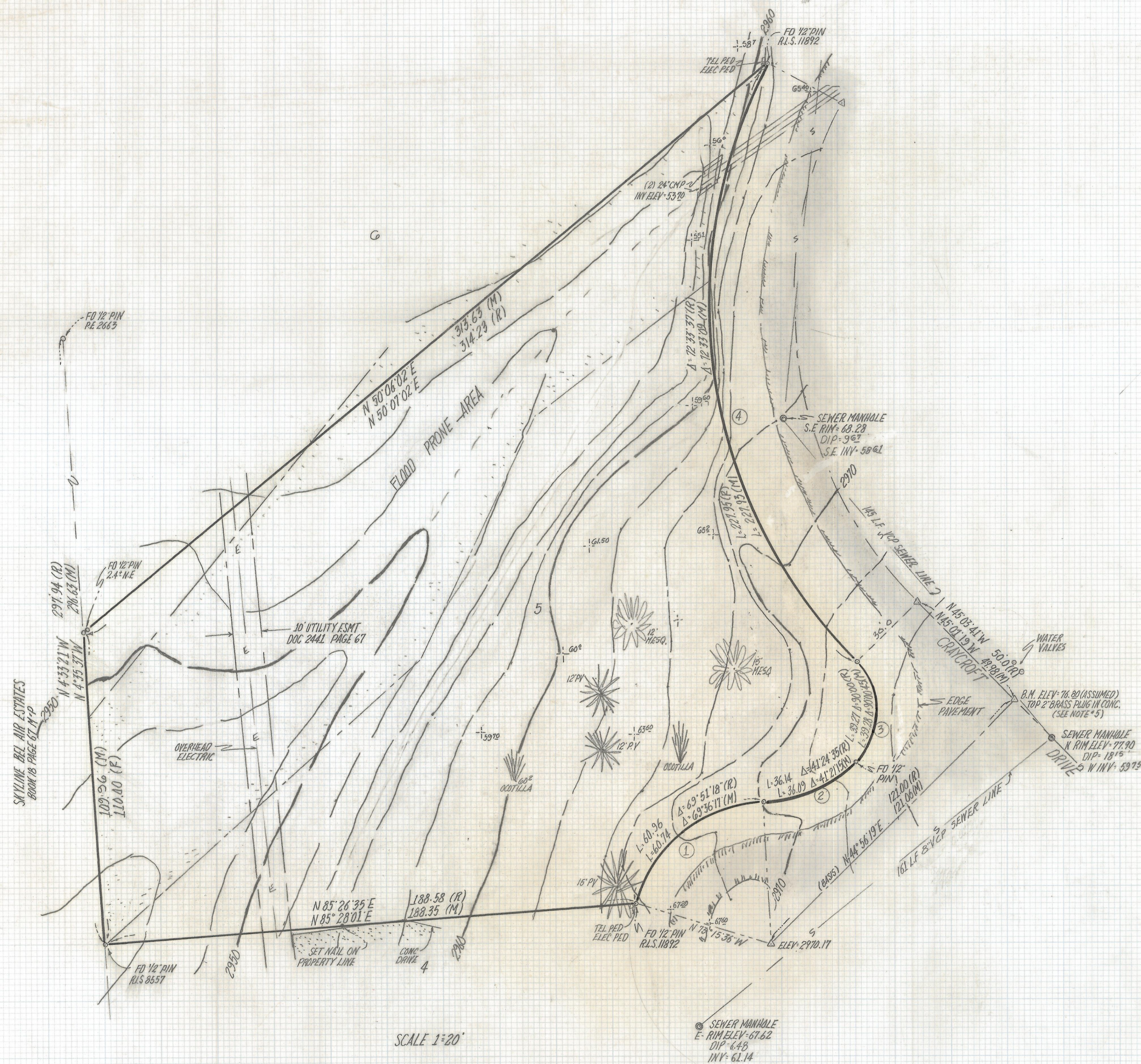
CURVE DATA				
Nº	RADIUS	DELTA	TANGENT LENGTH	CHORD
1	50.0	69.3617	34.75	60.74
2	50.0	41.2115	18.87	36.09
3	25.0	90.0045	25.01	39.28
4	180.0	72.3309	192.11	227.19

NOTES

- 1) \diamond INDICATES SET 1/2" PIN MKD L.S. 4680 UNLESS NOTED
- 2) M - MEASURED
- 3) R - MAP OR DEED RECORD
- 4) Δ - INDICATES 2" BRASS PLUG IN CONC. MKD P.E. 2463 UNLESS NOTED
- 5) BASIS OF ELEVATION TAKEN FROM FLECHA CAIDA FLOOD STUDY JOB# 841012 SHT 6 OF 24 DATED 10-13-84
- 6) \ddagger INDICATES EXISTING GROUND ELEVATION
- 7) SEWER DATUM PER PIMA COUNTY SEWER PLAN Nº S-631 SHT 30F6

RESULTS OF SURVEY

OF LOT 5 SHADOW RIDGE NORTH AS RECORDED IN BOOK 29 OF MAPS AND PLATS AT PAGE 72 IN THE OFFICE OF THE PIMA COUNTY RECORDER PIMA COUNTY ARIZONA



SCALE 1"=20'



RFM	ROBERT F. MELLEN REGISTERED LAND SURVEYOR 1250 N. MOHAVE ST. TUCSON, ARIZONA (602) 888-1012	DATE: 5-23-95 DRAWN BY: EMT CHECKED BY: RFM JOB NO: 95-59 SCALE: 1"=20' SHEET 1 OF 1
	Z-2017-040	