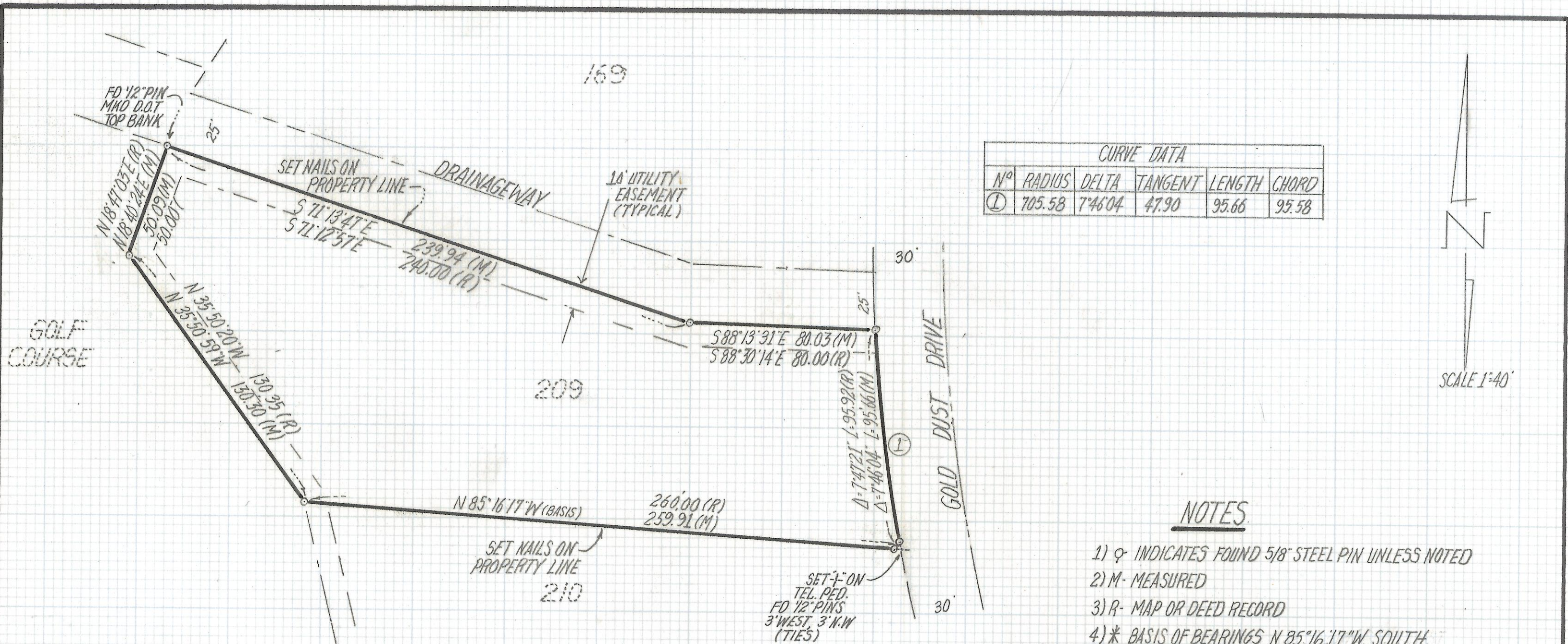
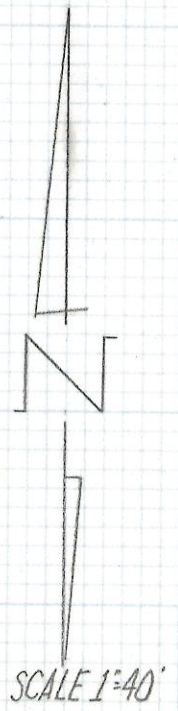


DISCLAIMER:

This unrecorded Record of Survey was donated to the City of Tucson. The City of Tucson provides this data for your personal use "as is." Additionally, the City of Tucson provides this information with the understanding that it is not guaranteed to be accurate, correct or complete and conclusions drawn from such information are the responsibility of the user.



CURVE DATA					
Nº	RADIUS	DELTA	TANGENT	LENGTH	CHORD
①	705.58	7°46'04"	47.90	95.66	95.58



NOTES

- 1) ♀ INDICATES FOUND 5/8" STEEL PIN UNLESS NOTED
- 2) M- MEASURED
- 3) R- MAP OR DEED RECORD
- 4) * BASIS OF BEARINGS N 85°16'17"W SOUTH PROPERTY LINE LOT 209 PER FORTY NINER COUNTRY CLUB EST BOOK 15 PAGE 39 M&P SHT 3 OF 3
- 5) SEE JOB#94-195

RESULTS OF SURVEY

OF LOT 209 FORTY NINER COUNTRY CLUB ESTATES AS RECORDED IN BOOK 15 OF MAPS AND PLATS AT PAGE 39 IN THE OFFICE OF THE PIMA COUNTY RECORDER PIMA COUNTY ARIZONA



ROBERT F. MELLEN
 REGISTERED LAND SURVEYOR
 TUCSON, ARIZONA
 JOB#95-62