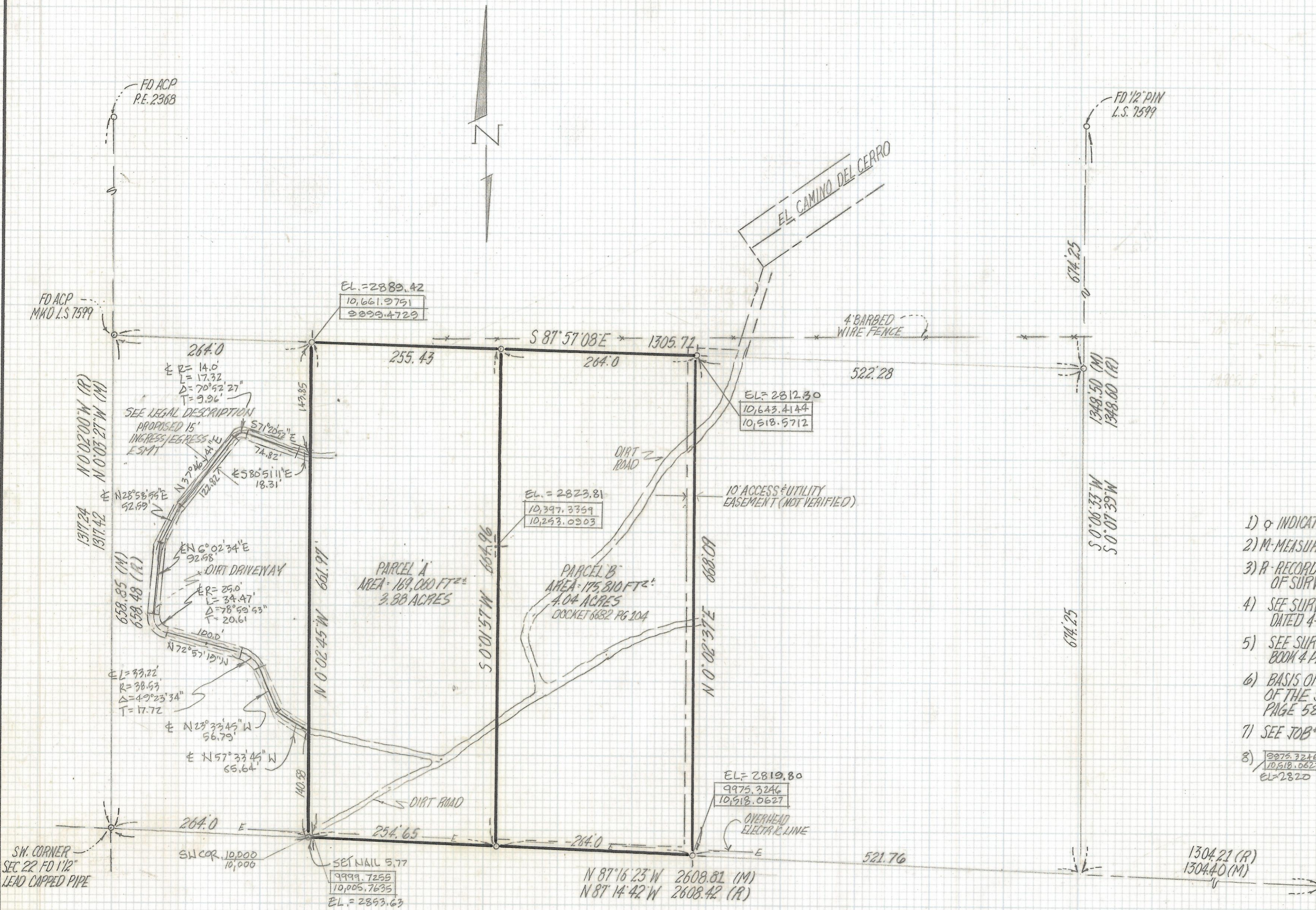


DISCLAIMER:

This unrecorded Record of Survey was donated to the City of Tucson. The City of Tucson provides this data for your personal use "as is." Additionally, the City of Tucson provides this information with the understanding that it is not guaranteed to be accurate, correct or complete and conclusions drawn from such information are the responsibility of the user.



NOTES

- 1) q INDICATES SET 1/2" PIN MKD L.S. 4680 UNLESS NOTED
- 2) M - MEASURED
- 3) R - RECORD PER PIMA COUNTY HIGHWAY DEPT. RECORD OF SURVEY BOOK 2 PAGE 58
- 4) SEE SURVEY BY LYNN HANSEN R.L.S. JOB# 94-01-02 DATED 4-11-94
- 5) SEE SURVEY BY TEAGUE & CO RECORD OF SURVEY BOOK 4 PAGE 100
- 6) BASIS OF BEARINGS N 88° 37' 35" W NORTH LINE OF THE SW 1/4, SW 1/4 SEC 22-13-12 PER R.S. BOOK 2 PAGE 58
- 7) SEE JOB# 95-11
- 8) $\begin{matrix} 9975.3246 \\ 10518.0627 \\ EL=2820 \end{matrix}$ - INDICATES PANEL POINT AND ELEVATIONS AND COORDINATES - FIVE PANELS CONSTRUCTED AS OF 8-17-95

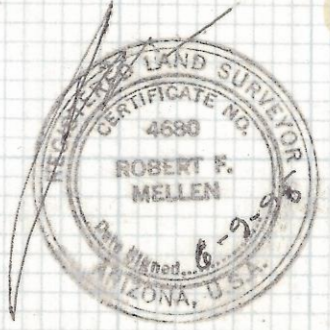
SW CORNER SEC 22 FD 1 1/2" LEAD CAPPED PIPE

S 1/4 CORNER SEC 22 FD STONE MKD 1/4" SOUTH FACE

SCALE 1"=100'

RESULTS OF SURVEY

OF A PORTION OF SOUTH HALF SOUTHWEST QUARTER, SOUTHWEST QUARTER OF SECTION 22 TOWNSHIP 13 SOUTH RANGE 12 EAST GILA AND SALT RIVER BASE AND MERIDIAN PIMA COUNTY, ARIZONA



REVISED ELEV. 8-28-95
 REVISED PANEL POINTS 8-17-96
 REVISED 15' INGRESS/EGRESS ESMT 7-9-95

ROBERT F. MELLEN
 REGISTERED LAND SURVEYOR
 TULSON, ARIZONA
 JOB# 95-70