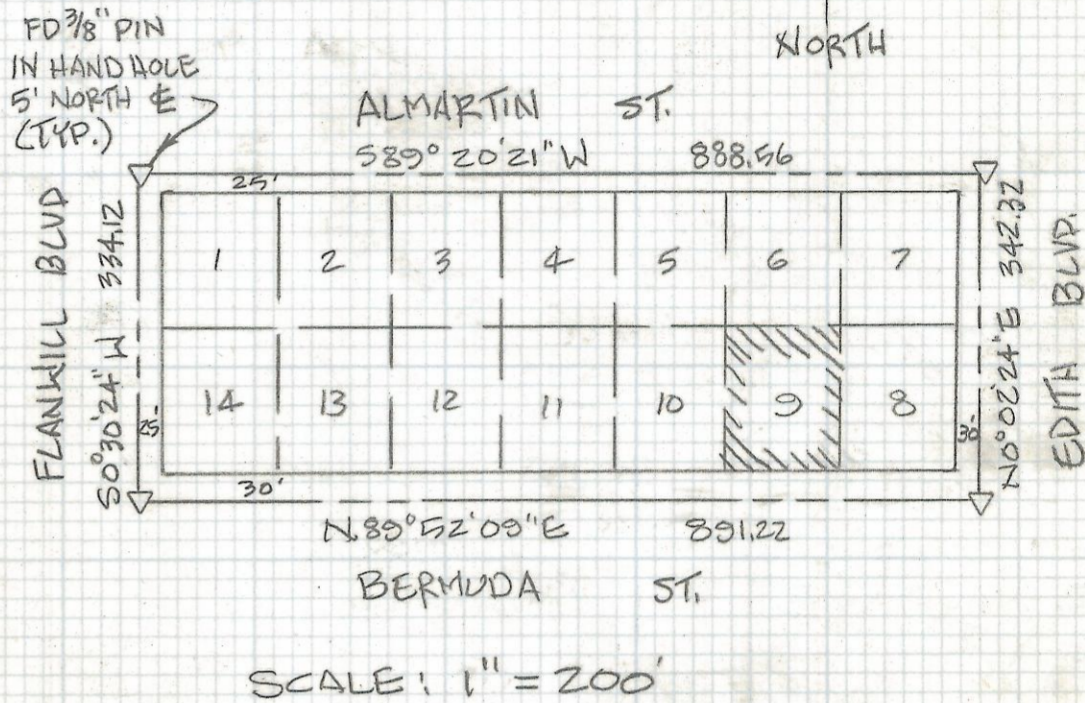
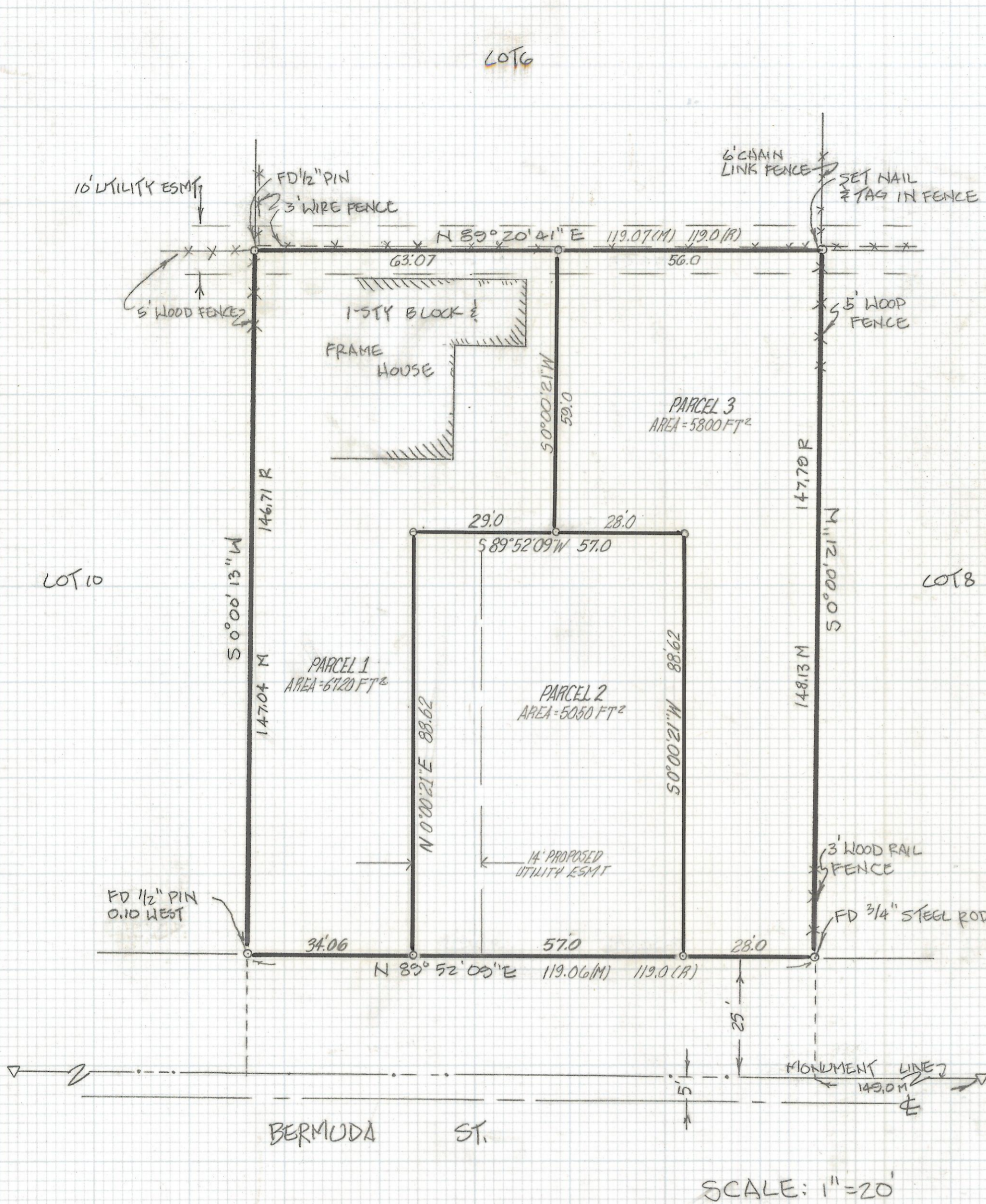


# **DISCLAIMER:**

**This unrecorded Record of Survey was donated to the City of Tucson. The City of Tucson provides this data for your personal use "as is." Additionally, the City of Tucson provides this information with the understanding that it is not guaranteed to be accurate, correct or complete and conclusions drawn from such information are the responsibility of the user.**

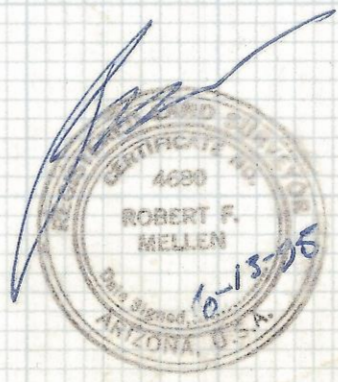


NOTES:

- 1)  $\circ$  INDICATES SET 1/2" PIN MKD LS 4680 UNLESS NOTED
- 2)  $\nabla$  INDICATES MONUMENT FOUND - 3/8" PIN IN HAND HOLE 5' NORTH OF CENTERLINE
- 3) R - MAP OF DEED RECORD
- 4) M - MEASURED
- 5) SEE JOBS #89-24, #89-36, #94-177

RESULTS OF SURVEY

OF LOT 9 BLOCK 2 OF ALMARTIN ADDITION RECORDED IN BOOK 7 OF MAPS AND PLATS AT PAGE 53 IN THE OFFICE OF THE PIMA COUNTY RECORDER, PIMA COUNTY, ARIZONA.



ROBERT F. MELLEN  
REGISTERED LAND SURVEYOR  
TUCSON, ARIZONA  
JOB 95-71

REVISED LOTS 1, 2, AND 3 6-20-95

Z-2017-047