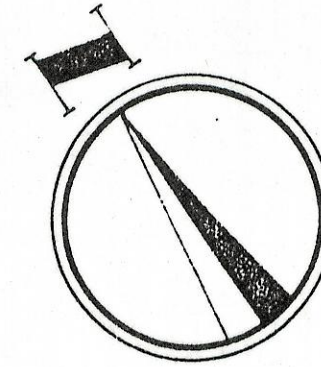


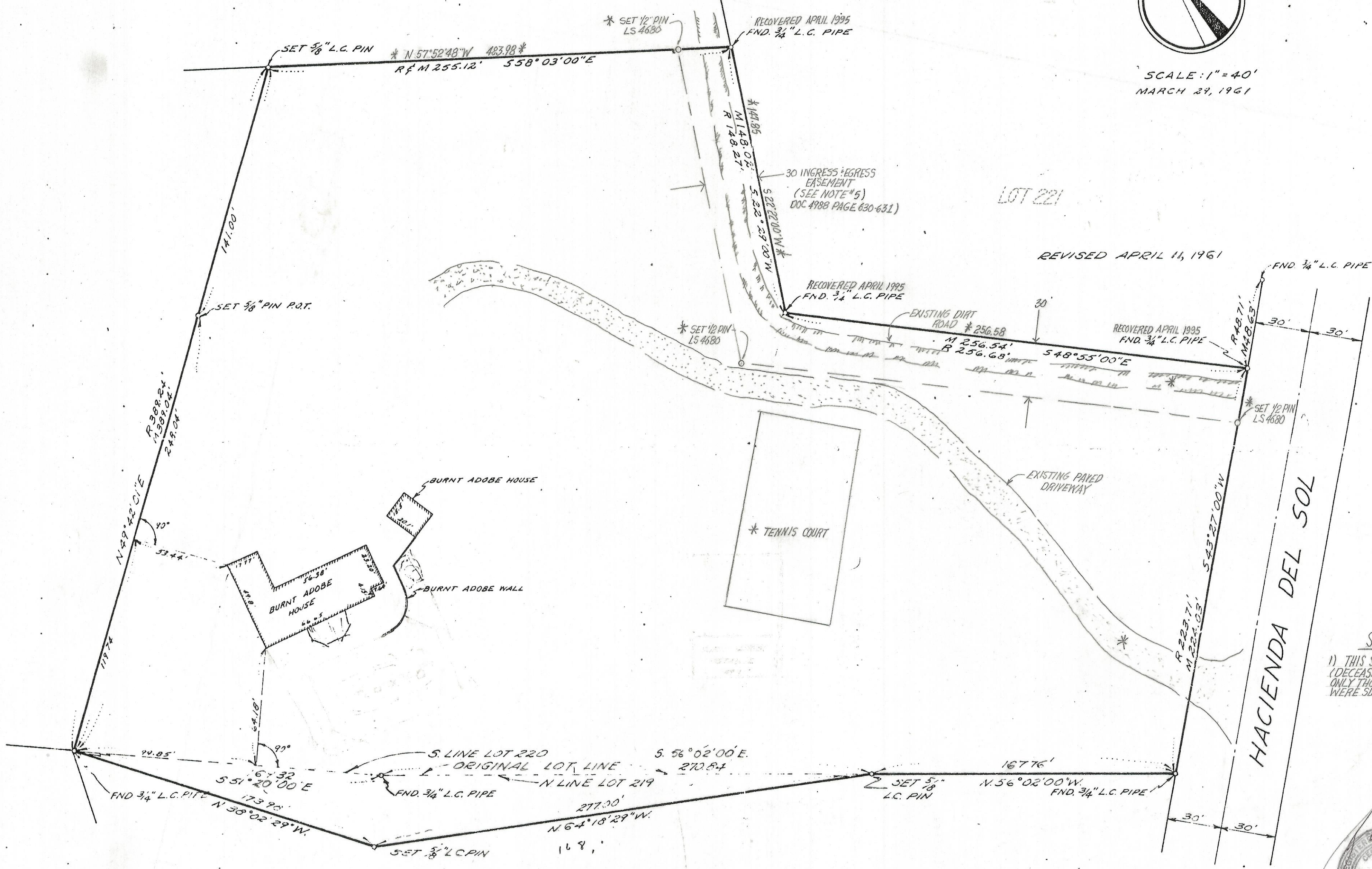
DISCLAIMER:

This unrecorded Record of Survey was donated to the City of Tucson. The City of Tucson provides this data for your personal use "as is." Additionally, the City of Tucson provides this information with the understanding that it is not guaranteed to be accurate, correct or complete and conclusions drawn from such information are the responsibility of the user.

LOT 211
JOB# 85-52*



SCALE: 1" = 40'
MARCH 29, 1961



SPECIAL NOTE

1) THIS SURVEY IS BY TA BLANTON (DECEASED) FURNISHED BY OWNER. ONLY THOSE ITEMS MARKED THIS * WERE SURVEYED BY THE UNDERSIGNED

MAP SHOWING RESULTS
OF SURVEY OF
PORTIONS OF LOTS 220 & 219
CATALINA FOOTHILLS ESTATES No 2

- NOTE:
- 1) R = RECORD DISTANCE
 - 2) M = MEASURED DISTANCE
 - 3) L.C. = LEAD CAP
 - 4) PINS SET ARE 5/8" STEEL REINFORCING PINS 15" LONG
 - 5) BOUNDARY SURVEY BY TA BLANTON DATED MARCH 29 1961
 - 6) SEE SURVEY OF 30' EASEMENT BY ROBERT F. MELLEN DATED 4-24-95 JOB# 95-8
 - 6)* RESULTS OF SURVEY BY MELLEN



ROBERT F. MELLEN
REGISTERED LAND SURVEYOR
TUCSON, ARIZONA
JOB# 95-74