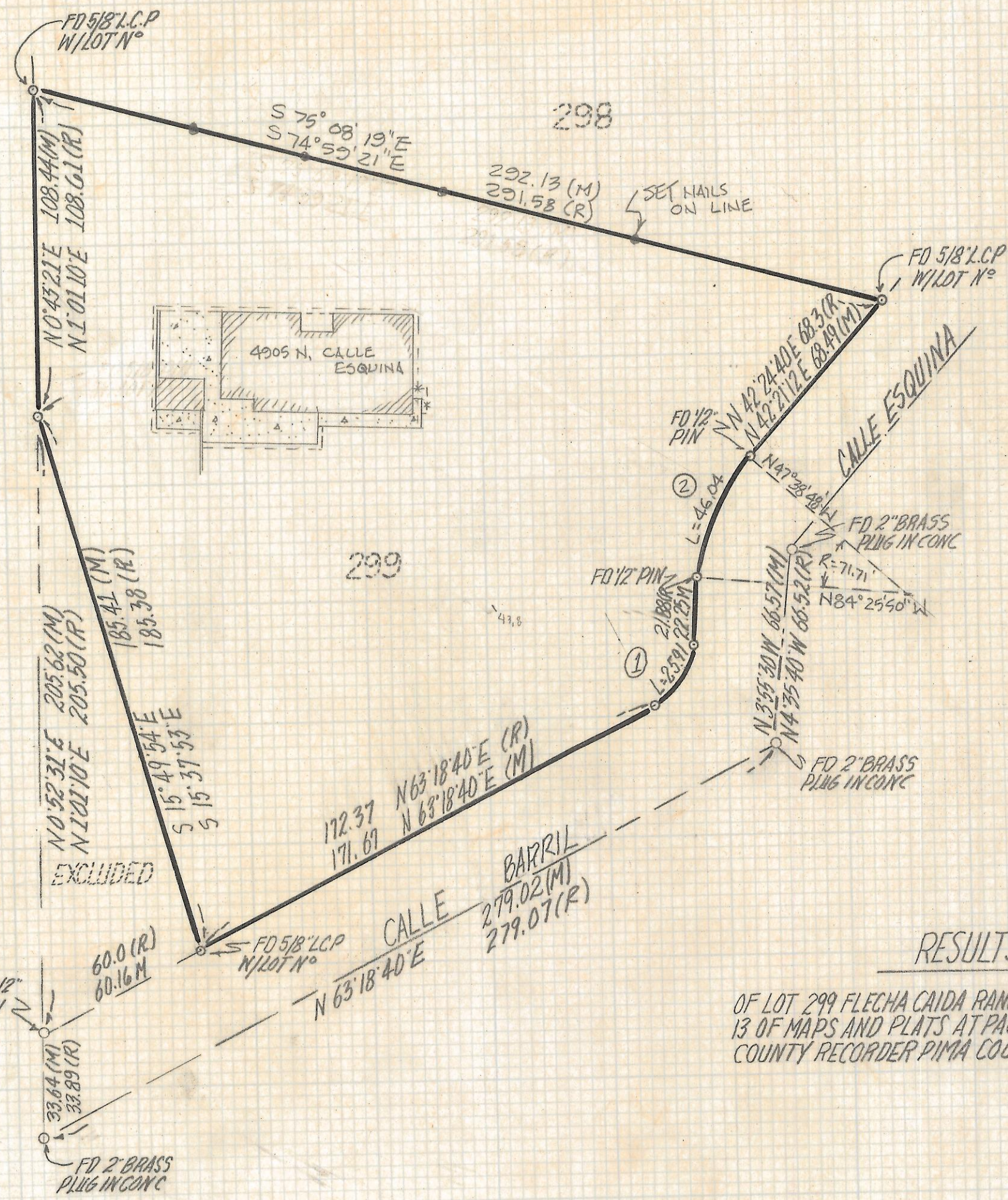
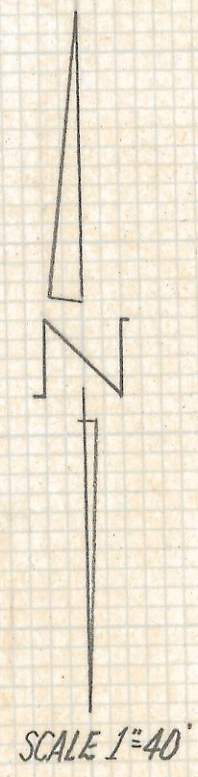


# **DISCLAIMER:**

**This unrecorded Record of Survey was donated to the City of Tucson. The City of Tucson provides this data for your personal use "as is." Additionally, the City of Tucson provides this information with the understanding that it is not guaranteed to be accurate, correct or complete and conclusions drawn from such information are the responsibility of the user.**



CURVE DATA					
Nº	RADIUS	DELTA	TANGENT	LENGTH	CHORD
1	25.0	59°23'10	14.26	25.91	24.77
2	71.71	36°47'02	23.84	46.04	45.25



NOTES

- 1) INDICATES SET 1/2" PIN L.S. 4680 UNLESS NOTED
- 2) M - MEASURED
- 3) A - MAP OR DEED RECORD
- 4) \* BASIS OF BEARINGS N63°18'40"E CENTERLINE CALLE ESQUINA PER FLECHA CAIDA RANCH EST NO 6 BOOK 13 PAGE 82 MAPS AND PLATS

RESULTS OF SURVEY

OF LOT 299 FLECHA CAIDA RANCH ESTATES Nº 6 AS RECORDED IN BOOK 13 OF MAPS AND PLATS AT PAGE 82 IN THE OFFICE OF THE PIMA COUNTY RECORDER PIMA COUNTY, ARIZONA



ROBERT F. MELLEN  
REGISTERED LAND SURVEYOR  
TUCSON, ARIZONA  
JOB Nº 95-81

REVISED HOUSE LOC. 7/21/95 GM

Z-2017-053