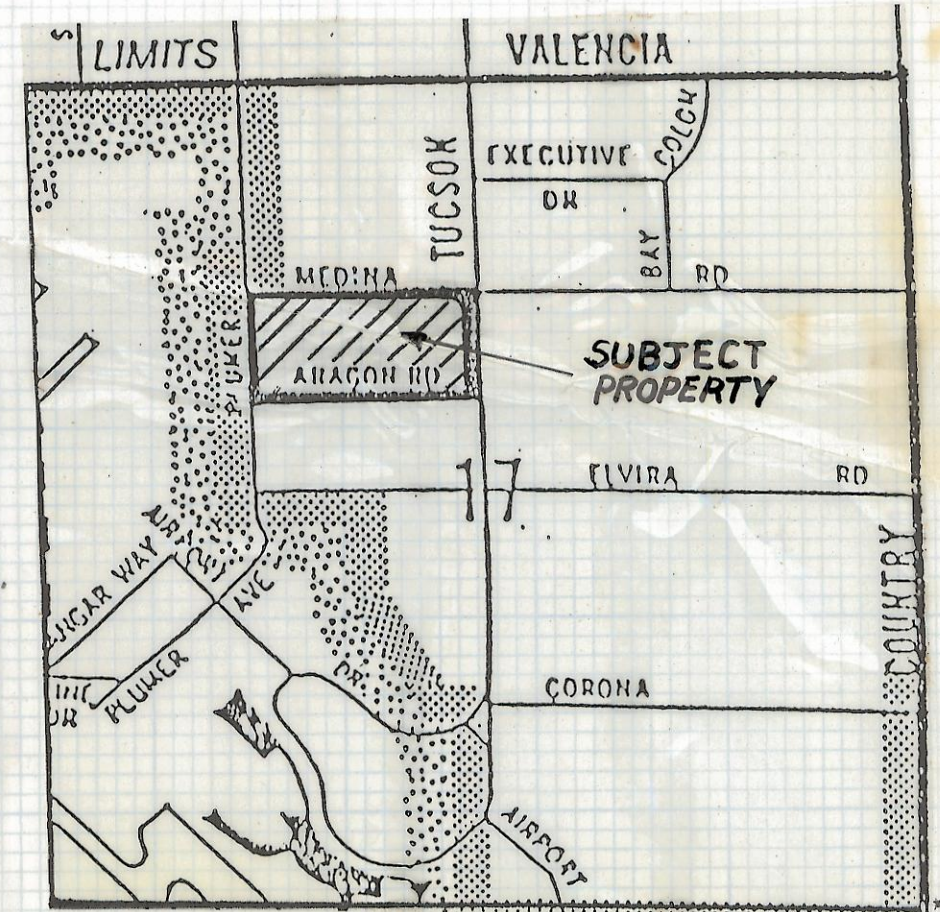
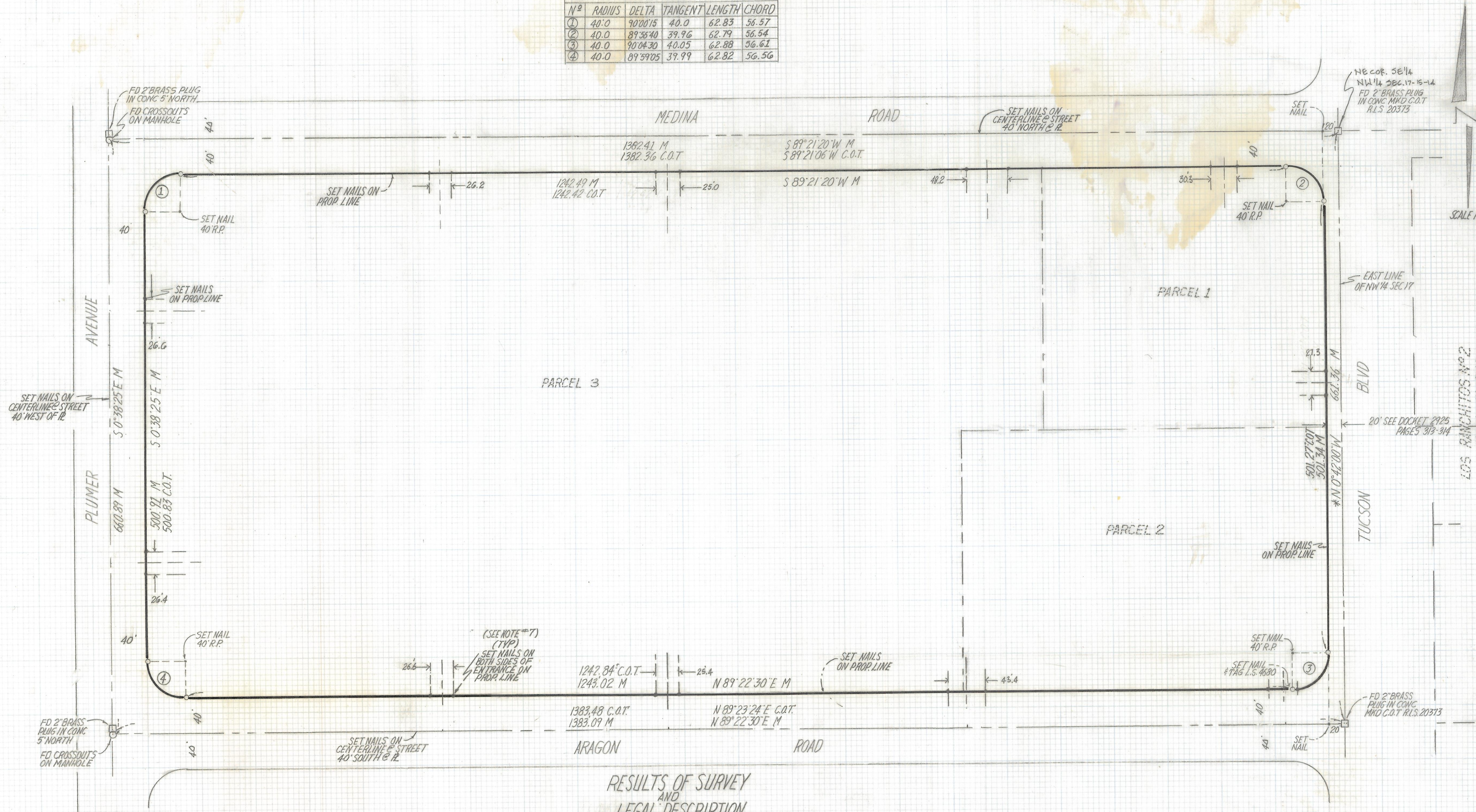


DISCLAIMER:

This unrecorded Record of Survey was donated to the City of Tucson. The City of Tucson provides this data for your personal use "as is." Additionally, the City of Tucson provides this information with the understanding that it is not guaranteed to be accurate, correct or complete and conclusions drawn from such information are the responsibility of the user.

CURVE TABLE					
N ^o	RADIUS	DELTA	TANGENT	LENGTH	CHORD
①	40.0	90°00'15"	40.0	62.83	56.57
②	40.0	89°55'40"	39.96	62.79	56.54
③	40.0	90°04'30"	40.05	62.88	56.61
④	40.0	89°59'05"	39.99	62.82	56.56



LOCATION MAP
SECTION 17 TWP 15 SOUTH R. 14 EAST
G.S.R.B. & M. PIMA COUNTY ARIZONA
N.T.S.

NOTES

- ① - Indicates set 1/2" pin marked L.S. 4680 unless noted
- ② - Indicates set nail
- M - Measured
- R - Map or deed record
- C.O.T. - City of Tucson
- * - Basis of bearings North 0° 42' 00" West East line of the NW 1/4, Sec. 17, Twp. 15 S. of R. 14 E. Per Docket 5960 Page 747
- The distances shown at entrances & exit points are from nail to nail on property line and may not be practical for planned construction
- See City of Tucson right-of-way map, Plan N° R-65-39, sheet 1 of 1
- See City of Tucson Monumentation Map Plan N° 11-95-23, sheet 1 of 2

RESULTS OF SURVEY AND LEGAL DESCRIPTION

PARCEL ONE

The Northeast Quarter of the Northeast Quarter of the Northwest Quarter of Section 17, Township 15 South, Range 14 East, Gila and Salt River Base and Meridian, Pima County, Arizona.

EXCEPT the North 40 feet, and
EXCEPT that portion conveyed to the City of Tucson for widening of Tucson Boulevard by Deed recorded February 8, 1967 in Docket Book 2925 at page 313.

PARCEL TWO

All of that portion of land situated in the Northeast Quarter of the Southeast Quarter of the Northwest Quarter of Section 17, Township 15 South, Range 14 East, Gila and Salt River Base and Meridian, Pima County, Arizona, more particularly described as follows:

Beginning at a point on the center quarter section line of said Section 17, being also its intersection with the center line of Aragon Road and marked by a brass monument;
thence, North 00° 42' 00" West, along said quarter section line, a distance of 40 feet to a point;
thence, South 89° 22' 24" West, a distance of 59.95 feet to a point of curve on the northerly right-of-way line of said Aragon Road;
thence, South 89° 22' 24" West, along the northerly right-of-way line of said Aragon Road, a distance of 611.50 feet to the TRUE POINT OF BEGINNING;
thence, South 89° 22' 24" West, along the northerly right-of-way line of said Aragon Road, a distance of 531.44 feet to a point of tangent;
thence, to the right along a curve with a radius of 40 feet, a distance of 62.85 feet to a point of curve on the easterly right-of-way line of Plumer Avenue;
thence, North 00° 39' 04" West, along the easterly right-of-way line of said Plumer Avenue, a distance of 500.74 feet to a point of tangent;
thence, to the right along a curve with a radius of 40 feet, a distance of 62.73 feet to a point of curve on the southerly right-of-way line of Medina Road;
thence, North 89° 21' 03" East, along the southerly line of said Medina Road, a distance of 966.81 feet to a point;
thence, South 00° 41' 16" East, a distance of 290.55 feet to a point;
thence, South 89° 21' 43" West, a distance of 93.39 feet to a point;
thence, South 00° 39' 04" East, a distance of 290.58 feet to a point on the northerly right-of-way line of Aragon Road,
thence South 89 degrees 22 minutes 24 seconds West a distance of 242.15 feet to the TRUE POINT OF BEGINNING.

PARCEL THREE

All of that portion of land situated in the Northeast Quarter of the Southeast Quarter of the Northwest Quarter of Section 17, Township 15 South, Range 14 East, Gila and Salt River Base and Meridian, Pima County, Arizona, more particularly described as follows:

Beginning at a point on the center quarter section line of said Section 17, being also its intersection with the center line of Aragon Road and marked by a brass monument;
thence, North 00° 42' 00" West, along said quarter section line, a distance of 40 feet to a point;
thence, South 89° 22' 24" West, a distance of 59.95 feet to a point of curve, said point of curve being the TRUE POINT OF BEGINNING and being a point on the northerly right-of-way line of said Aragon Road;
thence, South 89° 22' 24" West, along the northerly right-of-way line of said Aragon Road, a distance of 369.35 feet to a point;
thence, North 00° 39' 04" West, a distance of 290.58 feet to a point;
thence, North 89° 21' 43" East, a distance of 409.06 feet to a point on the westerly line of Tucson Boulevard;
thence, South 00° 42' 00" East, along said westerly line of said Tucson Boulevard, a distance of 250.63 feet to a point of tangent;
thence, to the right along a curve, with a radius of 40 feet, a distance of 62.73 feet to a point of curve on the northerly right-of-way line of said Aragon Road being the TRUE POINT OF BEGINNING.

REVISIONS	DATE
ROBERT F. MELLEN REGISTERED LAND SURVEYOR 1250 N. MOHAVE ST. TUCSON, ARIZONA (602) 888-1012	DATE: 8-31-95 DRAWN BY: EMT JOB No. 95-100 SHEET 1 OF 1