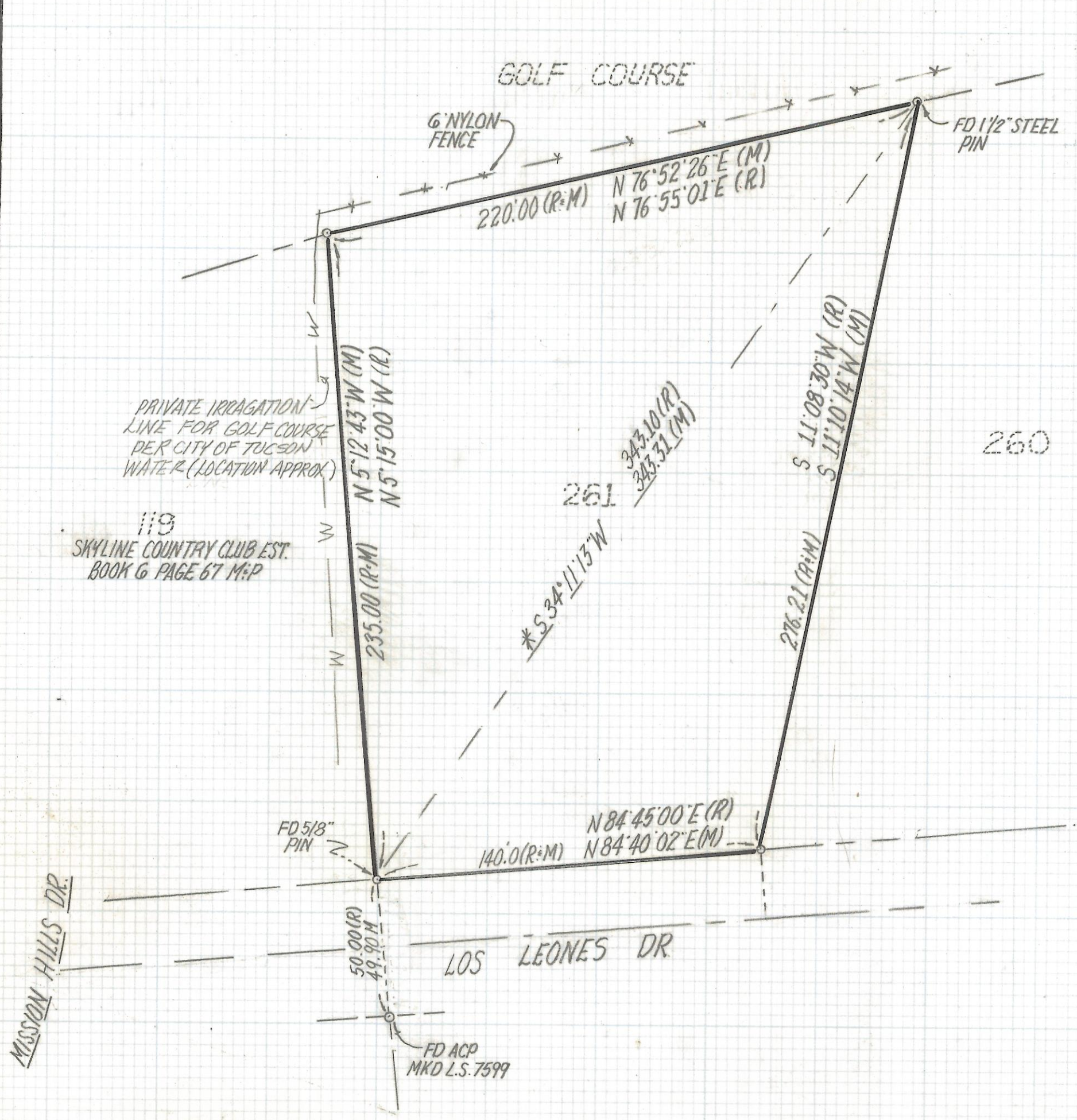


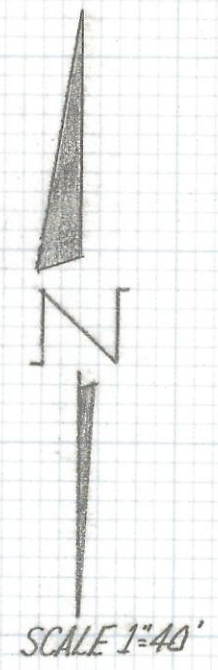
# **DISCLAIMER:**

**This unrecorded Record of Survey was donated to the City of Tucson. The City of Tucson provides this data for your personal use "as is." Additionally, the City of Tucson provides this information with the understanding that it is not guaranteed to be accurate, correct or complete and conclusions drawn from such information are the responsibility of the user.**



NOTES

- 1) ♀ INDICATES SET 1/2" PIN L.S. 4680 UNLESS NOTED
- 2) M- MEASURED
- 3) R- MAP OR DEED RECORD
- 4) \* BASIS OF BEARINGS N 34° 11' 13" W BETWEEN FOUND CORNERS OF LOT 261 SKYLINE COUNTRY CLUB EST PER BOOK 21 OF MAPS AND PLATS AT PAGE 3



RESULTS OF SURVEY

OF LOT 261 SKYLINE COUNTRY CLUB EST. AS RECORDED IN BOOK 21 OF MAPS AND PLATS AT PAGE 3 IN THE OFFICE OF THE PIMA COUNTY RECORDER PIMA COUNTY ARIZONA.



ROBERT F. MELLEN  
 REGISTERED LAND SURVEYOR  
 TUCSON, ARIZONA  
 JOB # 95-114

2-2017-068