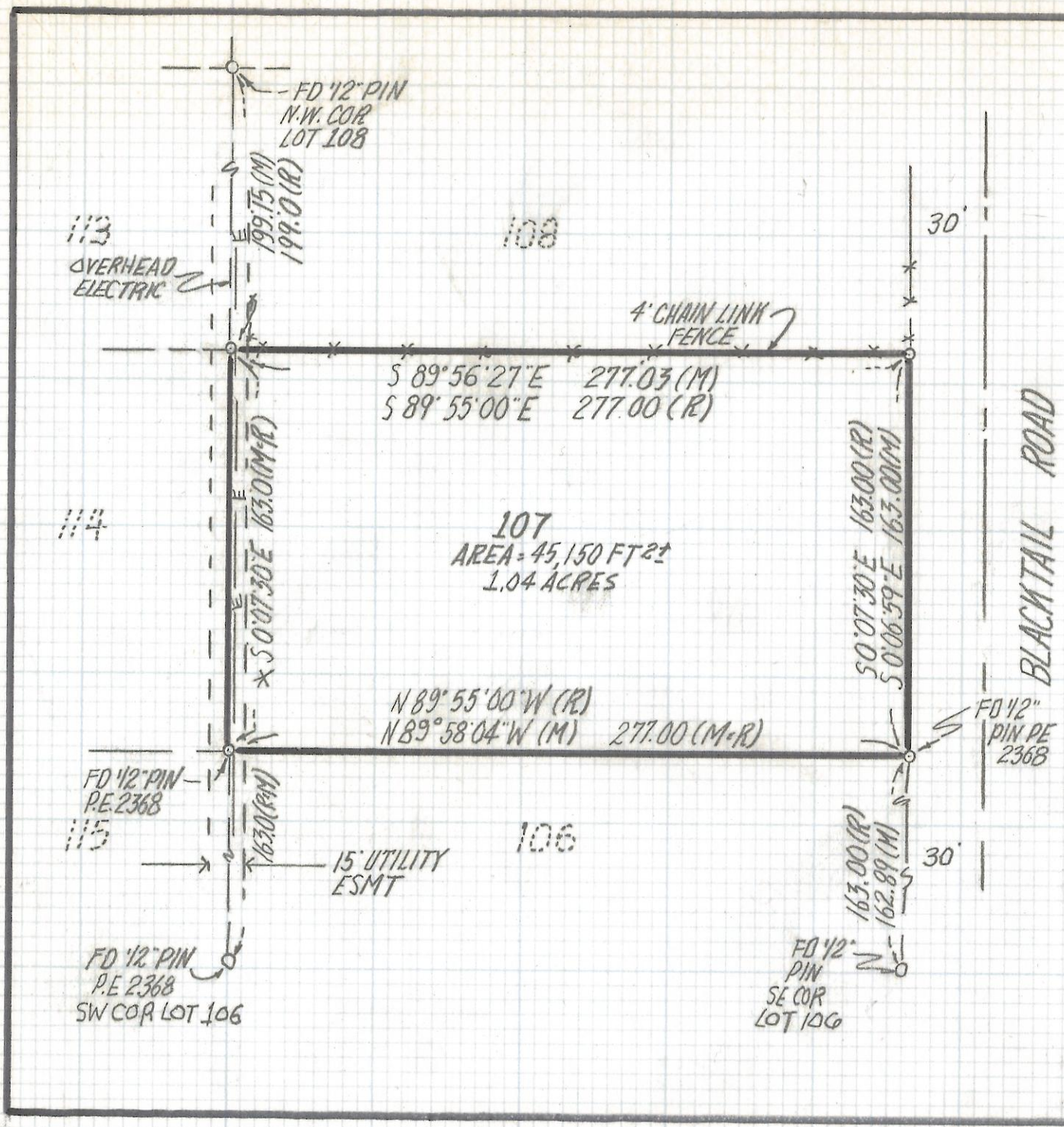


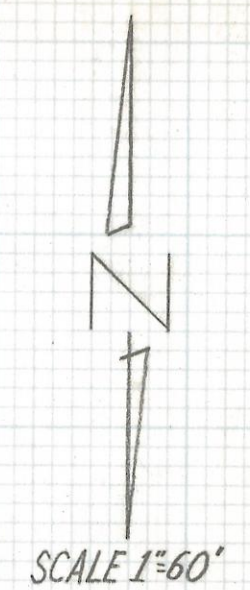
DISCLAIMER:

This unrecorded Record of Survey was donated to the City of Tucson. The City of Tucson provides this data for your personal use "as is." Additionally, the City of Tucson provides this information with the understanding that it is not guaranteed to be accurate, correct or complete and conclusions drawn from such information are the responsibility of the user.



NOTES

- 1) ♀ INDICATES SET 1/2" PIN MKD L.S. 4680 UNLESS NOTED
- 2) M- MEASURED
- 3) R- MAP OR DEED RECORD
- 4) * BASIS OF BEARINGS S 0° 07' 30" E WEST LINE LOT 107 PER HUNTER SUB BOOK 20 PAGE 58 M-P



RESULTS OF SURVEY

OF LOT 107 OF HUNTER SUBDIVISION AS RECORDED IN BOOK 20 OF MAPS AND PLATS AT PAGE 58 IN THE OFFICE OF THE PIMA COUNTY RECORDER PIMA COUNTY, ARIZONA



ROBERT F. MELLEN
 REGISTERED LAND SURVEYOR
 TUCSON, ARIZONA
 JOB # 95-122
 Z-2017-069