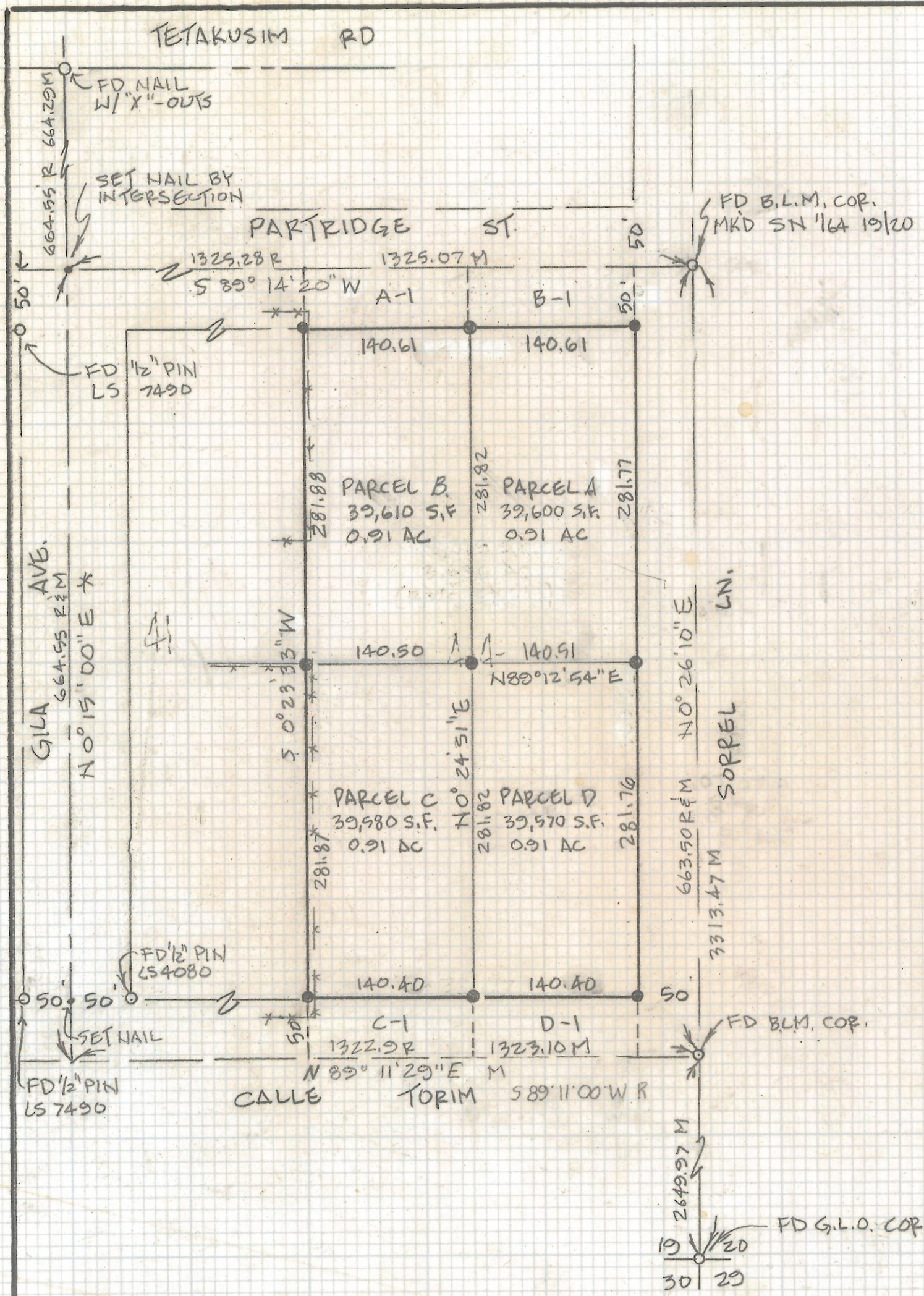


# **DISCLAIMER:**

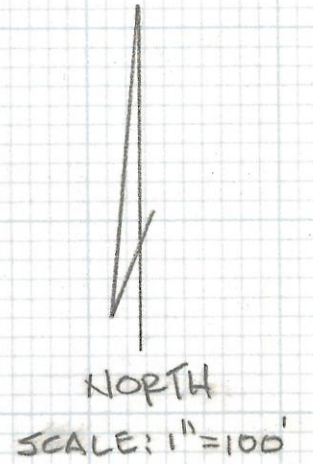
**This unrecorded Record of Survey was donated to the City of Tucson. The City of Tucson provides this data for your personal use "as is." Additionally, the City of Tucson provides this information with the understanding that it is not guaranteed to be accurate, correct or complete and conclusions drawn from such information are the responsibility of the user.**





**NOTES:**

- 1) ● INDICATES SET 1/2" PIN MKD LS4680 UNLESS NOTED
- 2) ○ INDICATES FOUND CORNER AS NOTED
- 3) R - MAP OR DEED RECORD
- 4) M - MEASURED
- 5) \* BASIS OF BEARINGS - N0°15'00"E AS SHOWN ON B.L.M. DATED AUG. 30, 1955 FOR WEST LINE LOT 41, NOW CALLED GILA AVE.



**AREA TABLE**

AREAS OF PARCELS INCLUDING 50' 1/2 R/W TO NORTH & SOUTH

A + A-1 =	46,640 S.F.	1.07 AC
B + B-1 =	46,630 S.F.	1.07 AC
C + C-1 =	46,600 S.F.	1.07 AC
D + D-1 =	46,590 S.F.	1.07 AC

**RESULTS OF SURVEY**

OF A PORTION OF GOVERNMENT LOT 44 IN SECTION 19, TOWNSHIP 15 SOUTH OF RANGE 13 EAST, GILA AND SALT RIVER BASE AND MERIDIAN, PIMA COUNTY, ARIZONA.



ROBERT F. MELLEN  
REGISTERED LAND SURVEYOR  
TUCSON, ARIZONA  
JOB #95-124