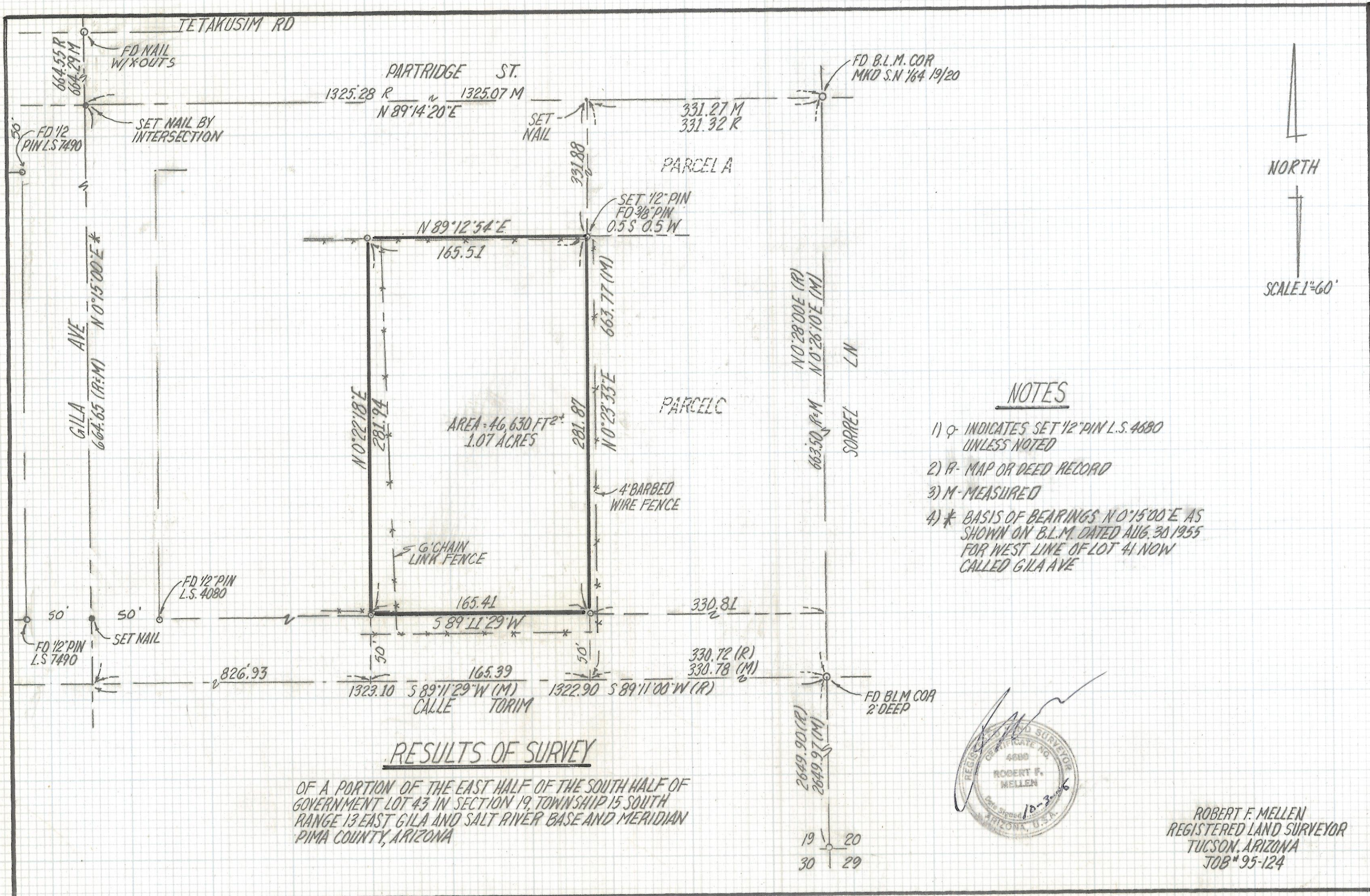


DISCLAIMER:

This unrecorded Record of Survey was donated to the City of Tucson. The City of Tucson provides this data for your personal use "as is." Additionally, the City of Tucson provides this information with the understanding that it is not guaranteed to be accurate, correct or complete and conclusions drawn from such information are the responsibility of the user.



NOTES

- 1) ♀ INDICATES SET 1/2" PIN L.S. 4080 UNLESS NOTED
- 2) R- MAP OR DEED RECORD
- 3) M- MEASURED
- 4) * BASIS OF BEARINGS N 0°15'00" E AS SHOWN ON B.L.M. DATED AUG. 30 1955 FOR WEST LINE OF LOT 41 NOW CALLED GILA AVE

RESULTS OF SURVEY

OF A PORTION OF THE EAST HALF OF THE SOUTH HALF OF GOVERNMENT LOT 43 IN SECTION 19, TOWNSHIP 15 SOUTH RANGE 13 EAST GILA AND SALT RIVER BASE AND MERIDIAN PIMA COUNTY, ARIZONA



ROBERT F. MELLEN
REGISTERED LAND SURVEYOR
TUCSON, ARIZONA
JOB # 95-124