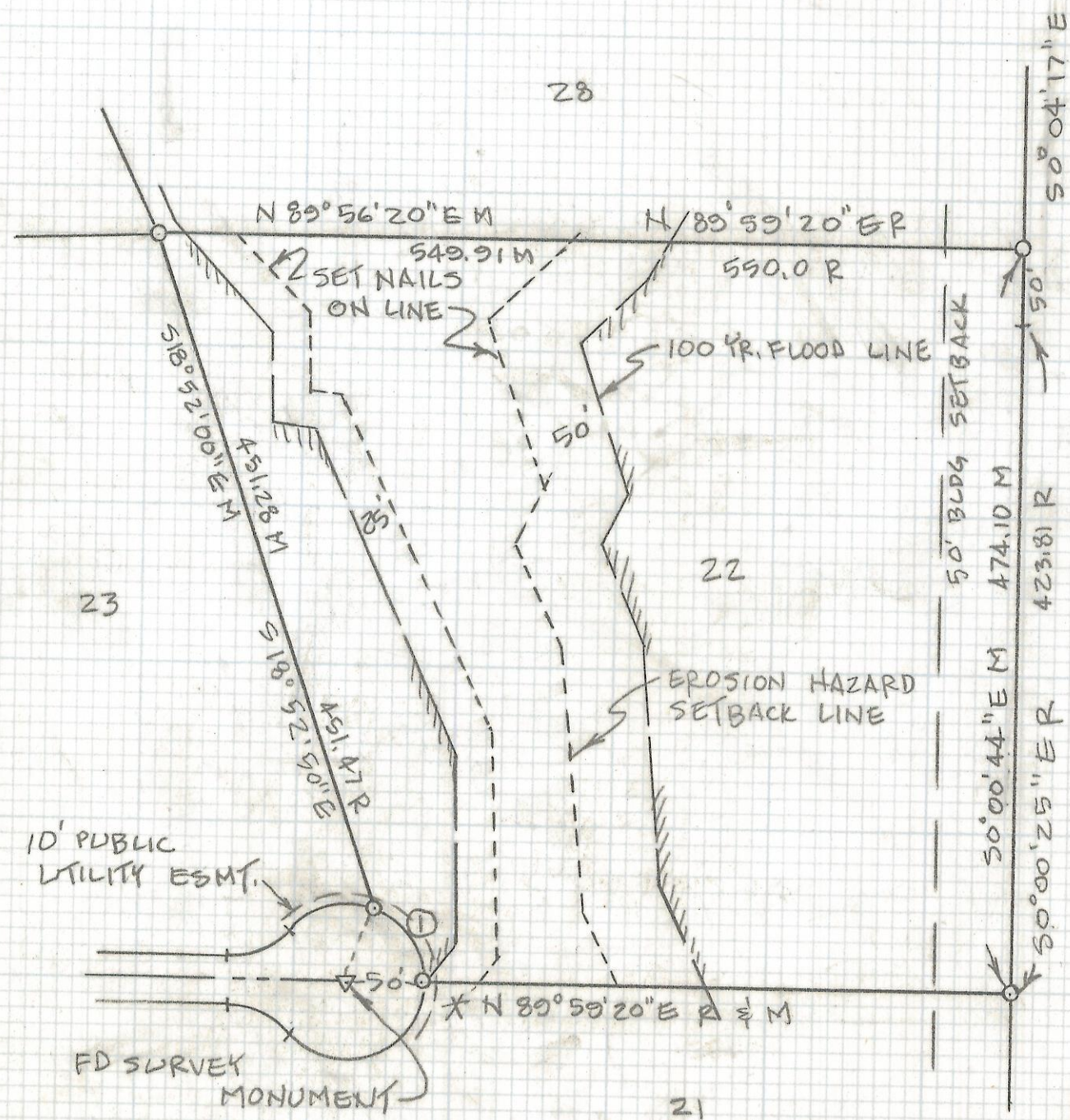


# **DISCLAIMER:**

**This unrecorded Record of Survey was donated to the City of Tucson. The City of Tucson provides this data for your personal use "as is." Additionally, the City of Tucson provides this information with the understanding that it is not guaranteed to be accurate, correct or complete and conclusions drawn from such information are the responsibility of the user.**





NOTES:

- 1)  $\circ$  INDICATES 1/2" PIN MKD LS 4527 FOUND UNLESS NOTED
- 2) R - MAP OR DEED RECORD
- 3) M - MEASURED
- 4) \* BASIS OF BEARINGS - N 89° 59' 20" E FOR SOUTH LINE OF LOT 22, AS PER PLAT

NORTH  
SCALE: 1" = 100'

RESULTS OF SURVEY

OF LOT 22 OF WILD HORSE RANCH ESTATES AS SHOWN IN BOOK 44 OF MAPS AND PLATS AT PAGE 63 IN THE OFFICE OF THE PIMA COUNTY RECORDER, PIMA COUNTY, ARIZONA.



CURVE # 1

DELTA	68° 45' 18" R
	68° 45' 40" M
RADIUS	50' R & M
LENGTH	60.00 R
	60.01 M

ROBERT F. MELLEN  
REGISTERED LAND SURVEYOR  
TUCSON, ARIZONA  
JOB 95-134