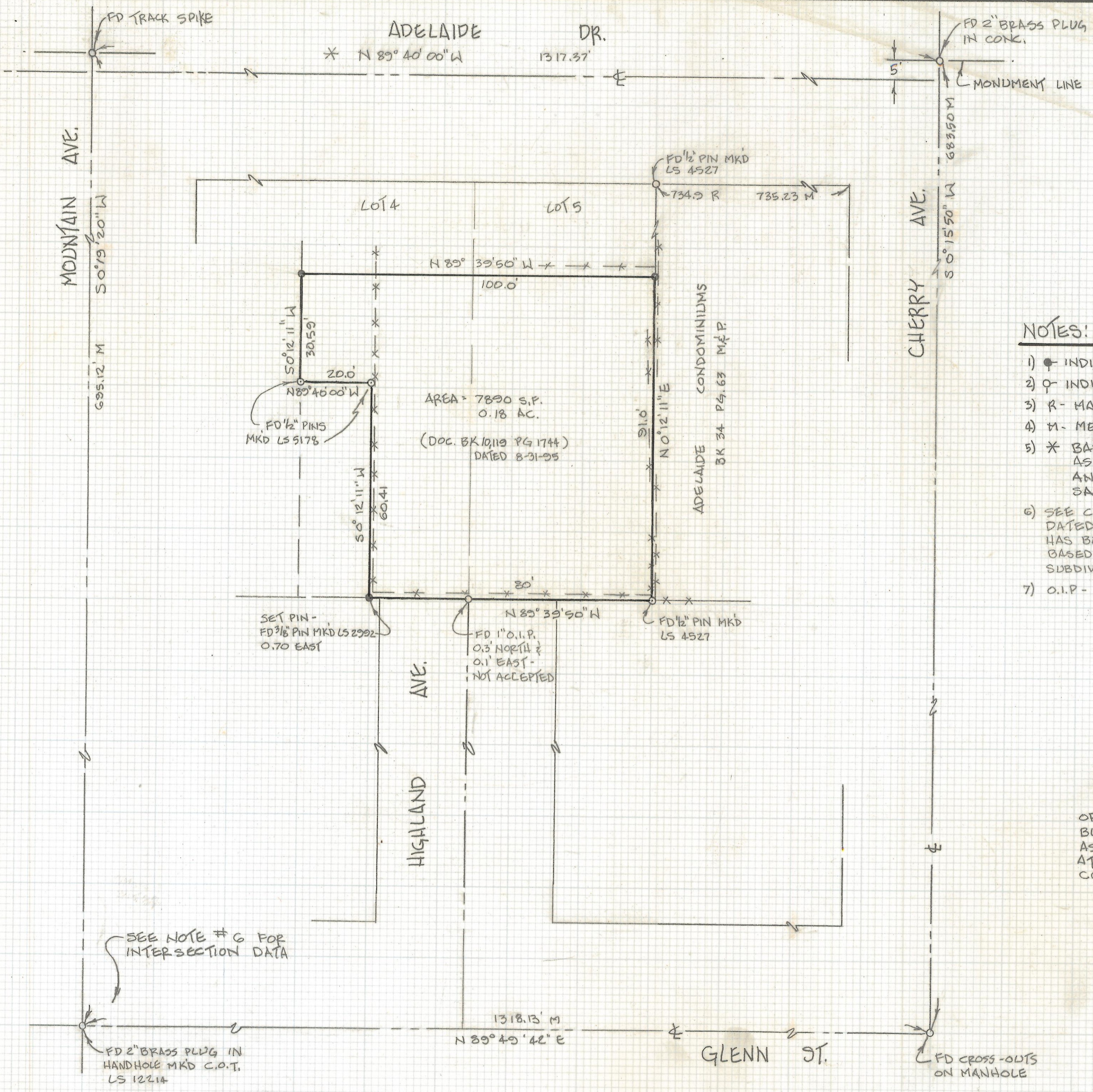


DISCLAIMER:

This unrecorded Record of Survey was donated to the City of Tucson. The City of Tucson provides this data for your personal use "as is." Additionally, the City of Tucson provides this information with the understanding that it is not guaranteed to be accurate, correct or complete and conclusions drawn from such information are the responsibility of the user.



AREA = 7890 S.F.
0.18 AC.
(DOC. BK 10119 PG 1744)
DATED 8-31-95

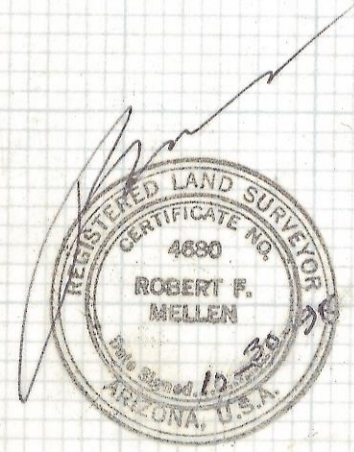
NOTES:

- 1) \bullet INDICATES SET 1/2" PIN MK'D LS 4680
- 2) \circ INDICATES FOUND CORNER AS NOTED
- 3) R - MAP OR DEED RECORD
- 4) M - MEASURED
- 5) * BASIS OF BEARINGS - $\frac{1}{4}$ OF ADELAIDE DR. AS SHOWN IN BOOK 34 P 5, 63 OF MAPS AND PLATS FOR ADELAIDE CONDOMINIUMS, SAID BEARING BEING $S 89^{\circ} 40' 00'' E$
- 6) SEE CITY OF TUCSON MONUMENT STUDY PLAN NO. H-71-4 DATED 3-10-72 (THE SOUTH 1/4 CORNER OF SECTION 31 HAS BEEN IN DISPUTE FOR MANY YEARS. THIS SURVEY IS BASED ON FOUND INTERNAL CORNERS OF ADJACENT SUBDIVISIONS AND OTHER DIVISIONS OF LOTS 4 & 5.)
- 7) O.I.P. - OPEN IRON PIPE

RESULTS OF SURVEY

OF PORTIONS OF LOT 4 AND LOTS OF BLOCK H HEDRICK ACREAGE TRACT #3 AS SHOWN IN BOOK 5 OF MAPS AND PLATS AT PAGE 7 IN THE OFFICE OF THE PIMA COUNTY RECORDER, PIMA COUNTY, ARIZONA.

SEE NOTE # 6 FOR INTERSECTION DATA



ROBERT F. MELLEN
REGISTERED LAND SURVEYOR
TUCSON, ARIZONA
JOB 95-133