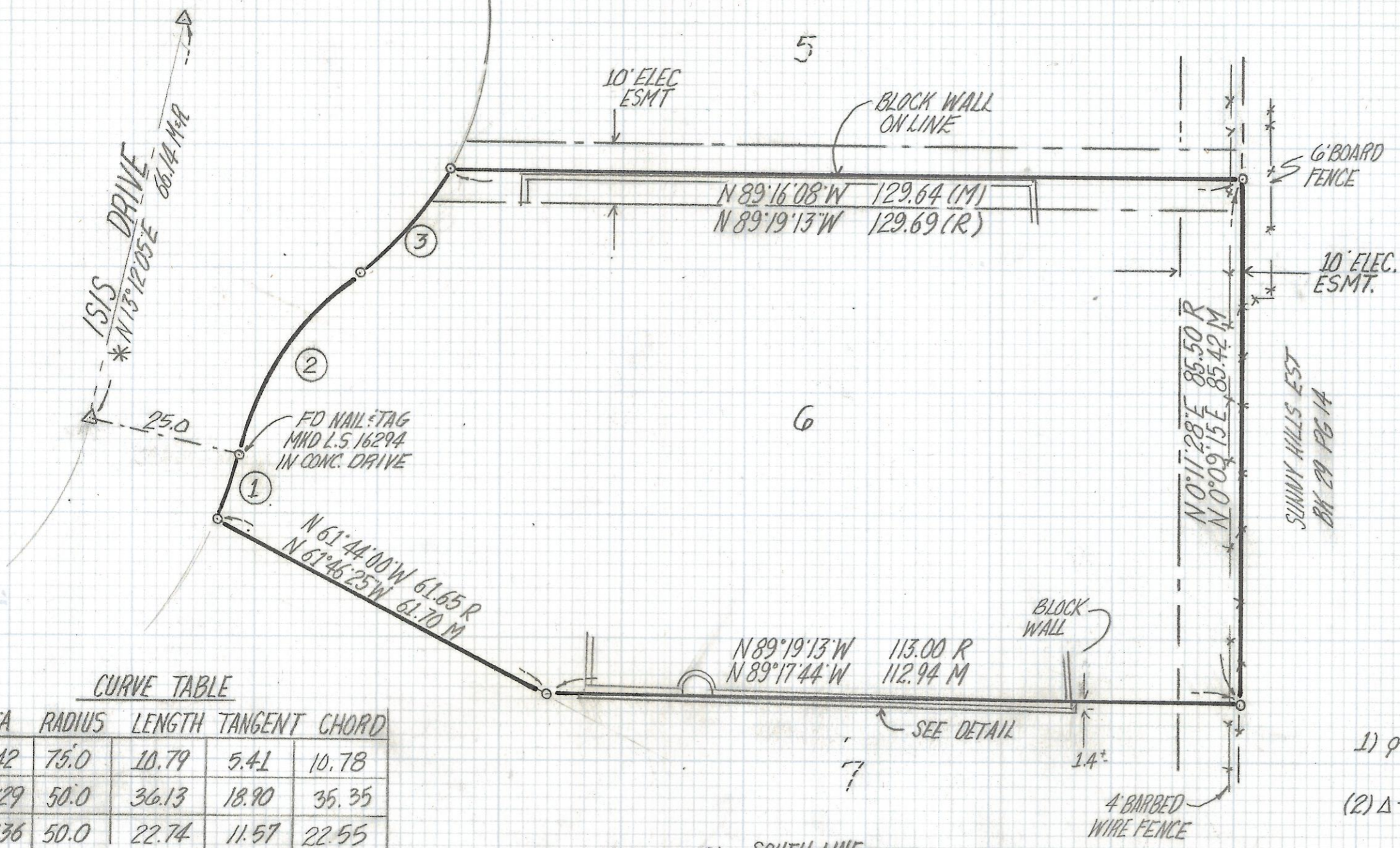


# **DISCLAIMER:**

**This unrecorded Record of Survey was donated to the City of Tucson. The City of Tucson provides this data for your personal use "as is." Additionally, the City of Tucson provides this information with the understanding that it is not guaranteed to be accurate, correct or complete and conclusions drawn from such information are the responsibility of the user.**





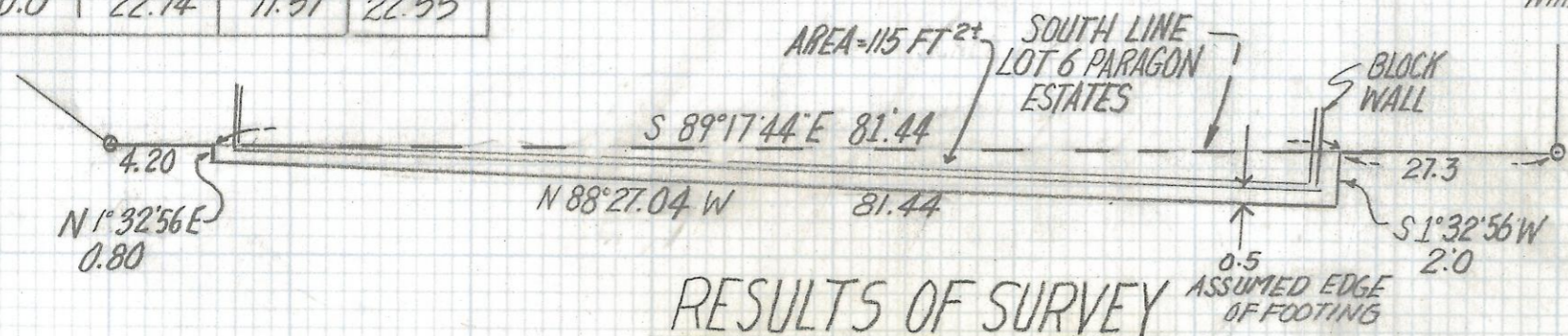
SCALE 1" = 20'

CURVE TABLE

N°	DELTA	RADIUS	LENGTH	TANGENT	CHORD
1	8°14'42"	75.0	10.79	5.41	10.78
2	41°24'29"	50.0	36.13	18.90	35.35
3	26°03'36"	50.0	22.74	11.57	22.55

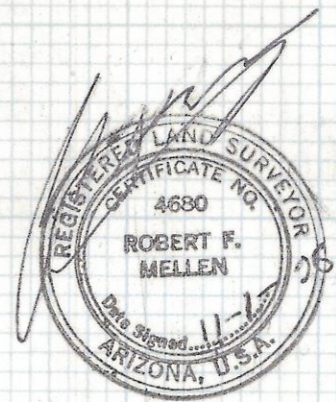
NOTES

- 1)  $\phi$  INDICATES FOUND 1/2" PIN L.S. 16294 UNLESS NOTED
- 2)  $\Delta$  - INDICATES FOUND 2" BRASS PLUG IN CONCRETE MKD L.S. 16294
- 3) M - MEASURED
- 4) R - MAP OR DEED RECORD
- 5) \* BASIS OF BEARINGS N 13° 12' 05" E CENTERLINE ISIS DRIVE PER PARAGON EST. BK 37 PG 86 MAPS AND PLATS.



RESULTS OF SURVEY

OF LOT 6 OF PARAGON ESTATES AS RECORDED IN BOOK 37 OF MAPS AND PLATS AT PAGE 86 IN THE OFFICE OF THE PIMA COUNTY RECORDER PIMA COUNTY ARIZONA



ROBERT F. MELLEN  
REGISTERED LAND SURVEYOR  
TUCSON, ARIZONA  
JOB# 95-137

REVISED DETAIL 11-9-95

Z-2017-079