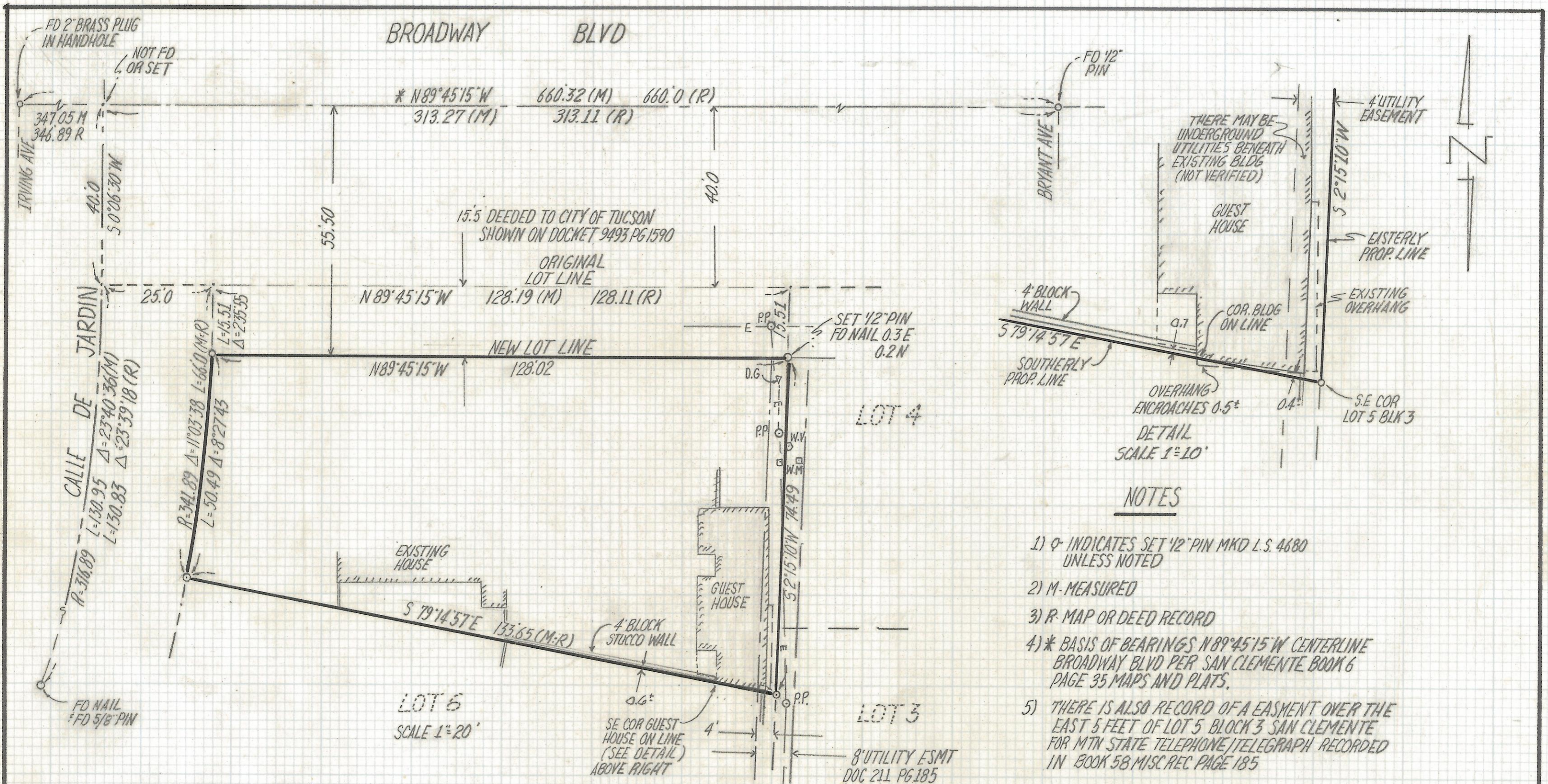


DISCLAIMER:

This unrecorded Record of Survey was donated to the City of Tucson. The City of Tucson provides this data for your personal use "as is." Additionally, the City of Tucson provides this information with the understanding that it is not guaranteed to be accurate, correct or complete and conclusions drawn from such information are the responsibility of the user.



RESULTS OF SURVEY

OF A PORTION OF LOT 5 BLOCK 3 SAN CLEMENTE AS RECORDED IN BOOK 6 OF MAPS AND PLATS AT PAGE 35 IN THE OFFICE OF THE PIMA COUNTY RECORDER PIMA COUNTY, ARIZONA



ROBERT F. MELLEN
REGISTERED LAND SURVEYOR
TUCSON, ARIZONA
JOB#95-145

- NOTES**
- 1) \circ INDICATES SET 1/2" PIN MKD L.S. 4680 UNLESS NOTED
 - 2) M- MEASURED
 - 3) R- MAP OR DEED RECORD
 - 4) * BASIS OF BEARINGS N89°45'15" W CENTERLINE BROADWAY BLVD PER SAN CLEMENTE BOOK 6 PAGE 35 MAPS AND PLATS.
 - 5) THERE IS ALSO RECORD OF A EASMENT OVER THE EAST 5 FEET OF LOT 5 BLOCK 3 SAN CLEMENTE FOR MTN STATE TELEPHONE/TELEGRAPH RECORDED IN BOOK 58 MISC REC PAGE 185