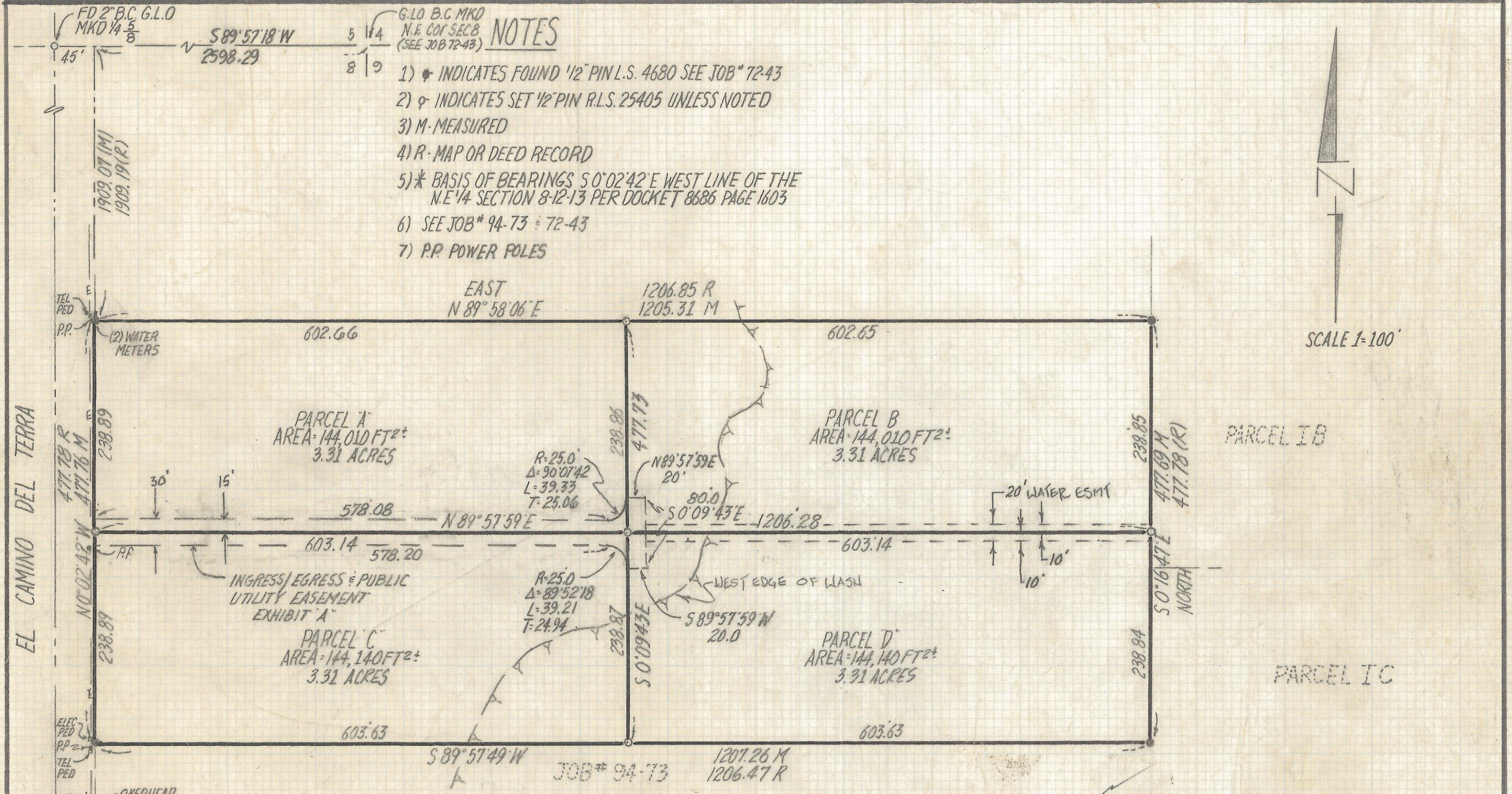
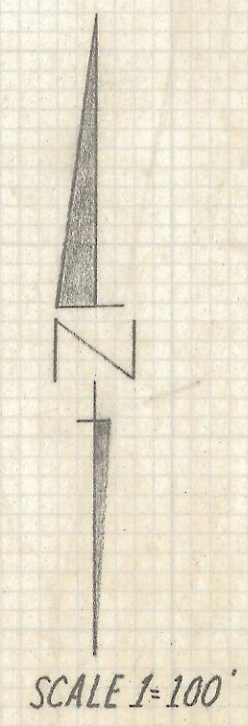


DISCLAIMER:

This unrecorded Record of Survey was donated to the City of Tucson. The City of Tucson provides this data for your personal use "as is." Additionally, the City of Tucson provides this information with the understanding that it is not guaranteed to be accurate, correct or complete and conclusions drawn from such information are the responsibility of the user.

NOTES

- 1) * INDICATES FOUND 1/2" PIN L.S. 4680 SEE JOB* 72-43
- 2) ♀ INDICATES SET 1/2" PIN R.L.S. 25405 UNLESS NOTED
- 3) M - MEASURED
- 4) R - MAP OR DEED RECORD
- 5) * BASIS OF BEARINGS S 0° 02' 42" E WEST LINE OF THE N.E. 1/4 SECTION 8-12-13 PER DOCKET 8686 PAGE 1603
- 6) SEE JOB* 94-73 & 72-43
- 7) P.P. POWER POLES



RESULTS OF SURVEY

OF A PORTION OF THE WEST HALF OF THE NORTHEAST QUARTER SECTION 8, TOWNSHIP 12 SOUTH RANGE 13 EAST GILA AND SALT RIVER BASE AND MERIDIAN PIMA COUNTY, ARIZONA.



ROBERT F. MELLEN
REGISTERED LAND SURVEYOR
TUCSON, ARIZONA
JOB# 95-159

REVISED WATER ESMT 4-1-96
REVISED EASEMENT 2-12-96
REVISED WATER EASEMENT 5-1-96

Z-2017-094