

DISCLAIMER:

This unrecorded Record of Survey was donated to the City of Tucson. The City of Tucson provides this data for your personal use "as is." Additionally, the City of Tucson provides this information with the understanding that it is not guaranteed to be accurate, correct or complete and conclusions drawn from such information are the responsibility of the user.

BLOCK 27

15

16

17

20' ALLEY

N 89°51'19"E 680.0 R
N 89°52'19"E 680.38 M

SET 1/2" PIN
RLS 25405

ELEC
PED

FD 1/2" PIN
L.S. 15933

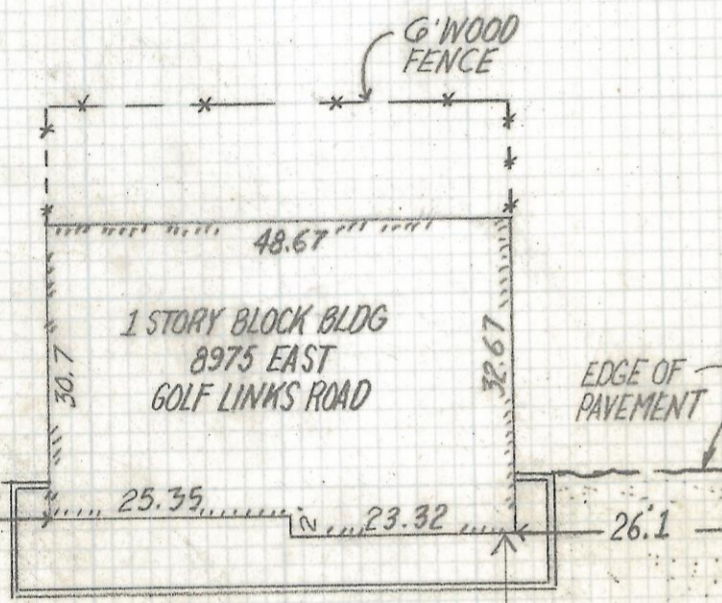
100.0 M-R

580.38 M
580.0 R

20' ALLEY

SCALE 1" = 20'

N 0°09'20"W 200.00 R
N 0°06'48"W 200.04 M



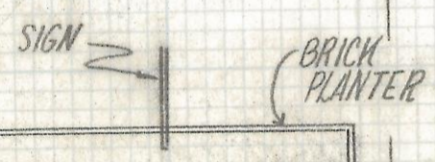
200.01 M
200.00 R
N 0°06'48"W
N 0°09'20"W

NOTES

- 1) ♂ INDICATES FOUND ACP MKD L.S. 4785 UNLESS NOTED
- 2) M- MEASURED
- 3) R- MAP OR DEED RECORD
- 4) * BASIS OF BEARINGS N 89°51'19"E SOUTH LINE OF LOT 39 BLOCK 27 ROLLING HILLS N°3 BOOK 17 PAGE 1 MAPS AND PLATS.

EDGE OF PAVEMENT

EDGE OF PAVEMENT



100.0 M-R

S.E. COR LOT 39
FD 1/2" PIN
L.S. 15933

600.00 R
600.49 M

* N 89°51'19"E
700.49 M
700.00 R

FIRE HYDRANT

WATER METER

100'

GOLF LINKS ROAD

RESULTS OF SURVEY

OF A PORTION OF LOT 39 BLOCK 27 OF ROLLING HILLS N°3 AS RECORDED IN BOOK 17 OF MAPS AND PLATS AT PAGE 1 IN THE OFFICE OF THE PIMA COUNTY RECORDER PIMA COUNTY ARIZONA



ROBERT F. MELLEN
REGISTERED LAND SURVEYOR
TUCSON, ARIZONA
JOB #95-162