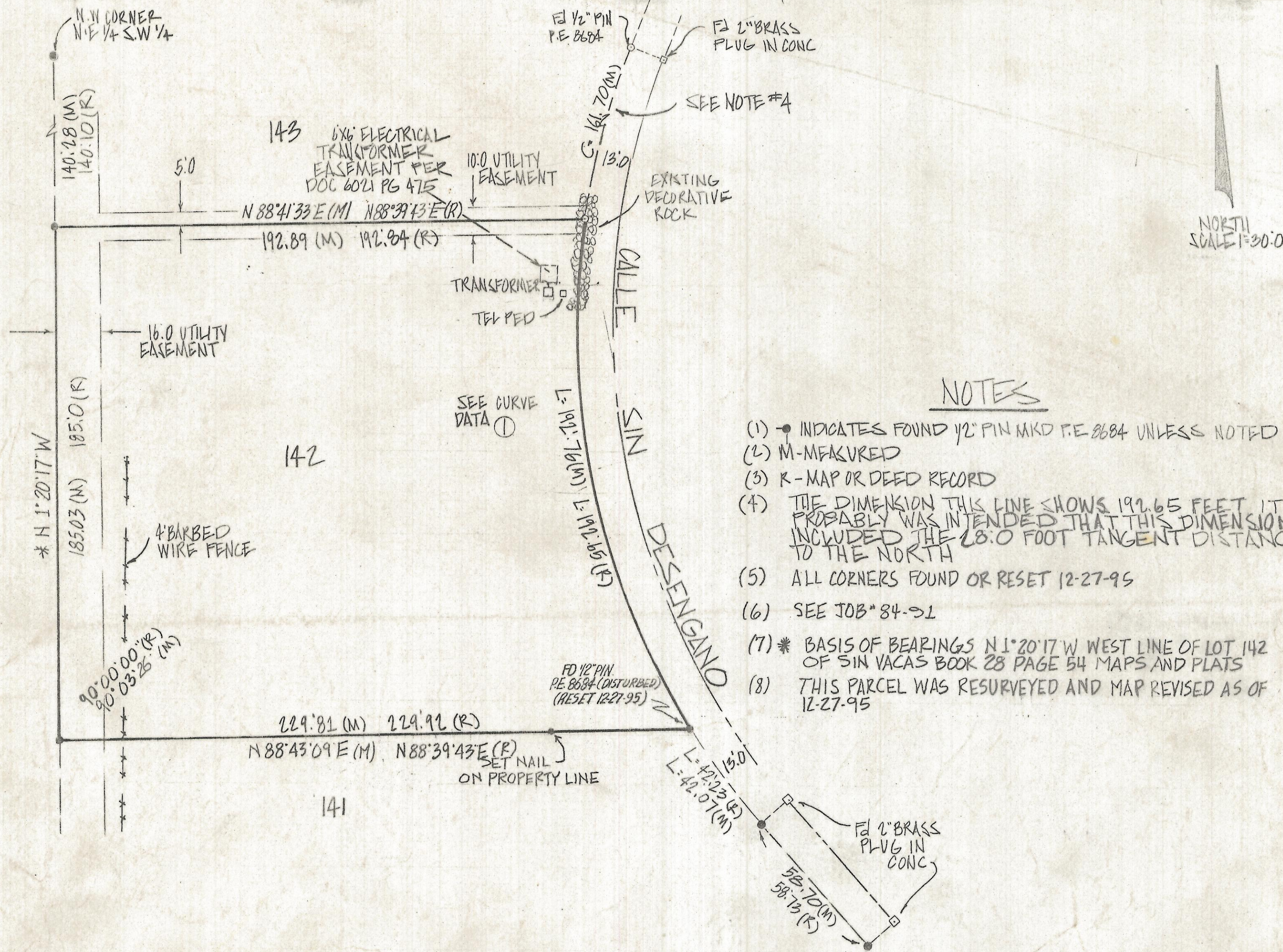


# **DISCLAIMER:**

**This unrecorded Record of Survey was donated to the City of Tucson. The City of Tucson provides this data for your personal use "as is." Additionally, the City of Tucson provides this information with the understanding that it is not guaranteed to be accurate, correct or complete and conclusions drawn from such information are the responsibility of the user.**





NOTES

- (1) ● INDICATES FOUND 1/2" PIN MKD P.E. 8684 UNLESS NOTED
- (2) M-MEASURED
- (3) R-MAP OR DEED RECORD
- (4) THE DIMENSION THIS LINE SHOWS 192.65 FEET IT PROBABLY WAS INTENDED THAT THIS DIMENSION INCLUDED THE 28.0 FOOT TANGENT DISTANCE TO THE NORTH
- (5) ALL CORNERS FOUND OR RESET 12-27-95
- (6) SEE JOB# 84-91
- (7) \* BASIS OF BEARINGS N 1° 20' 17" W WEST LINE OF LOT 142 OF SIN VACAS BOOK 28 PAGE 54 MAPS AND PLATS
- (8) THIS PARCEL WAS RESURVEYED AND MAP REVISED AS OF 12-27-95

RESULTS OF SURVEY

OF LOT 142 SIN-VACAS RECORDED IN BOOK 28 OF MAPS AND PLATS AT PAGE 54 IN THE OFFICE OF THE PIMA COUNTY RECORDER PIMA COUNTY ARIZONA

CURVE DATA					
Nº	RADIUS	DELTA	TANGENT	LENGTH	CHORD
1	273.0	40° 27' 36"	100.61	192.78	188.78



ROBERT F. MELLEN  
REGISTERED LAND SURVEYOR  
TUCSON, ARIZONA  
JOB# 95-165

REVISED 12-27-95

Z-2017-096