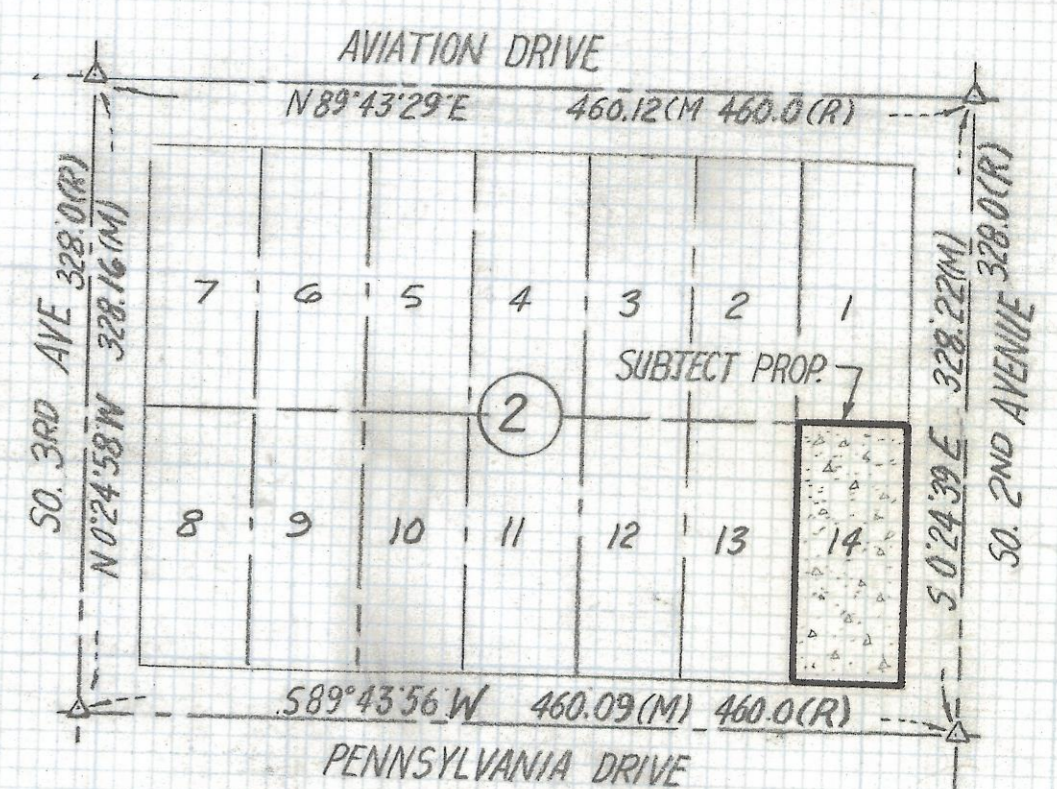
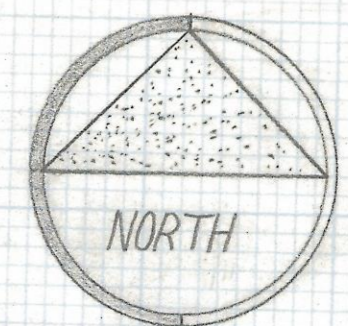
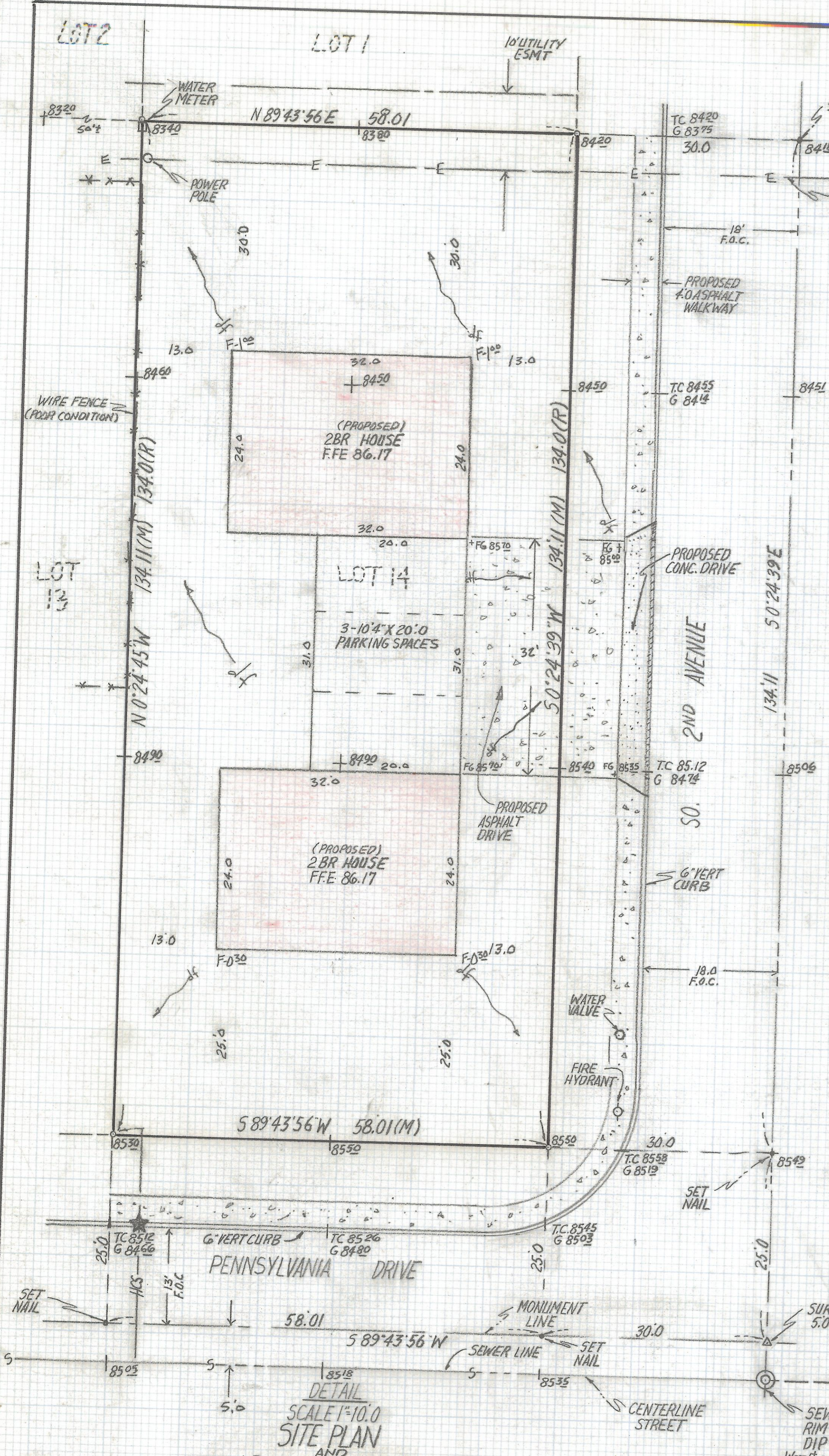


# **DISCLAIMER:**

**This unrecorded Record of Survey was donated to the City of Tucson. The City of Tucson provides this data for your personal use "as is." Additionally, the City of Tucson provides this information with the understanding that it is not guaranteed to be accurate, correct or complete and conclusions drawn from such information are the responsibility of the user.**



**LOCATION MAP**  
 BLOCK 2 FAIRGROUNDS RESUB.  
 BOOK 7 PAGE 26 MAPS PLATS  
 PIMA COUNTY, ARIZONA  
 SCALE 1"=100'

**LEGEND**

- (1) d.f. - DIRECTION OF FLOW
- (2) T.C. - TOP OF CURB
- (3) G - GUTTER
- (4) F.C. - FACE OF CURB
- (5) P.P. - POWER POLE
- (6) H.C.S. HOUSE CONNECTION

**NOTES**

- (1)  $\phi$  INDICATES SET 1/2" PIN MKD L.S. 4680 UNLESS NOTED
- (2) M - MEASURED
- (3) R - MAP OR DEED RECORD
- (4)  $\nabla$  INDICATES SURVEY MONUMENT FOUND 5.0' NORTH OF CENTERLINE UNLESS NOTED
- (5) \* BASIS OF BEARINGS S 89°43'56" W CENTERLINE PENNSYLVANIA DRIVE PER FAIRGROUNDS ADDITION BOOK 7 PAGE 4 M.P.
- (6)  $\star$  SET BENCHMARK TOP OF CURB STAMPED H.C.S. ELEV. 2485.18 BASED CITY OF TUCSON DATUM R.R. SPIKE STAMPED B.M.#31 IN THE SOUTH-SIDE OF THE FIRST P.P. EAST OF 2ND AVE NORTH-SIDE RODEO WASH ELEV. 2483.86 PER F.B. 1530 PAGE 51
- (7) ALL FILLS TO PAD ELEVATION 0.67 BELOW F.F.E.

**DETAIL**  
 SCALE 1"=10.0'  
**SITE PLAN**  
 AND  
**RESULTS OF SURVEY**

OF LOT 14 BLOCK 2 FAIRGROUNDS RESUB. AS RECORDED IN BOOK 7 OF MAPS AND PLATS AT PAGE 26 IN THE OFFICE OF THE PIMA COUNTY RECORDER PIMA COUNTY, ARIZONA



ROBERT F. MELLEN REGISTERED LAND SURVEYOR 1250 W. MOHAVE ST. TUCSON, ARIZONA (602) 888-1012	REVISIONS	DATE
SCALE: 1" = 10'		DATE: 1-11-94
		DR BY: ENT CKBY: REM
		JOB NO. 34-5
		SHEET 1 OF 1

Z-2017-098