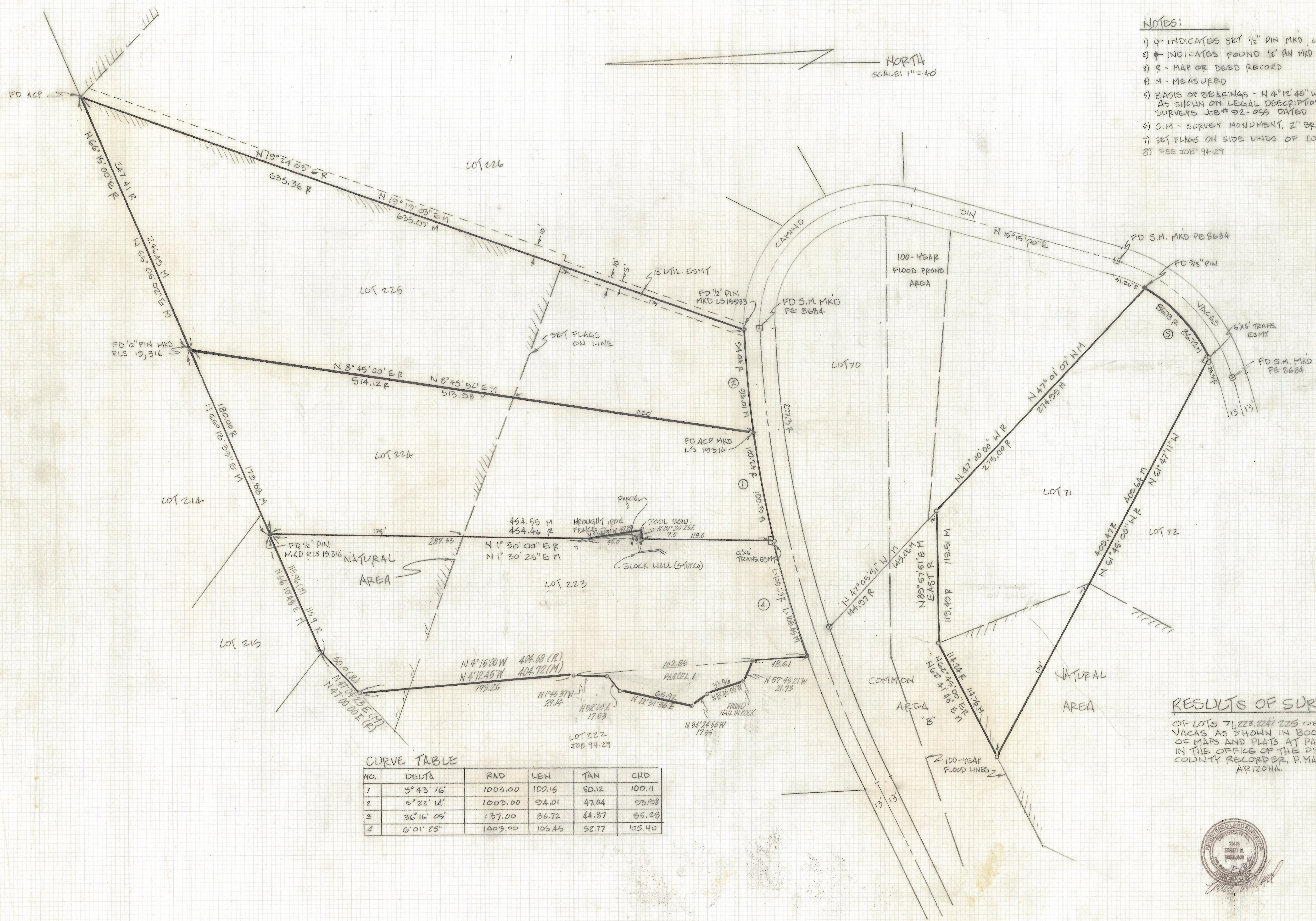


DISCLAIMER:

This unrecorded Record of Survey was donated to the City of Tucson. The City of Tucson provides this data for your personal use "as is." Additionally, the City of Tucson provides this information with the understanding that it is not guaranteed to be accurate, correct or complete and conclusions drawn from such information are the responsibility of the user.



- NOTES:
- 1) ◊ INDICATES SET 1/2" PIN MKD. LS 25,405 UNLESS NOTED
 - 2) ⊕ INDICATES FOUND 1/2" PIN MKD PE 8684 UNLESS NOTED
 - 3) R - MAP OR DEED RECORDED
 - 4) M - MEASURED
 - 5) BASIS OF BEARINGS - N 4° 12' 45" W MEASURED BEARING AS SHOWN ON LEGAL DESCRIPTION BY SONORAN DESERT SURVEYS JOB # 92-055 DATED 12-15-92
 - 6) S.M. - SURVEY MONUMENT, 2" BRASS PLUG IN CONC.
 - 7) SET FLAGS ON SIDE LINES OF LOTS 224 AND 225
 - 8) SEE JOB # 94-29

RESULTS OF SURVEY
 OF LOTS 71, 223, 224, 225 OF SIN VACAS AS SHOWN IN BOOK 28 OF MAPS AND PLATS AT PAGE 54 IN THE OFFICE OF THE PIMA COUNTY RECORDER, PIMA COUNTY, ARIZONA.

CURVE TABLE

| NO. | DELTA | RAD | LEN | TAN | CHD |
|-----|-------------|---------|--------|-------|--------|
| 1 | 5° 43' 16" | 1003.00 | 100.15 | 50.12 | 100.11 |
| 2 | 5° 22' 14" | 1003.00 | 94.01 | 47.04 | 93.98 |
| 3 | 36° 16' 05" | 137.00 | 86.72 | 44.87 | 86.28 |
| 4 | 6° 01' 25" | 1003.00 | 105.45 | 52.77 | 105.40 |

