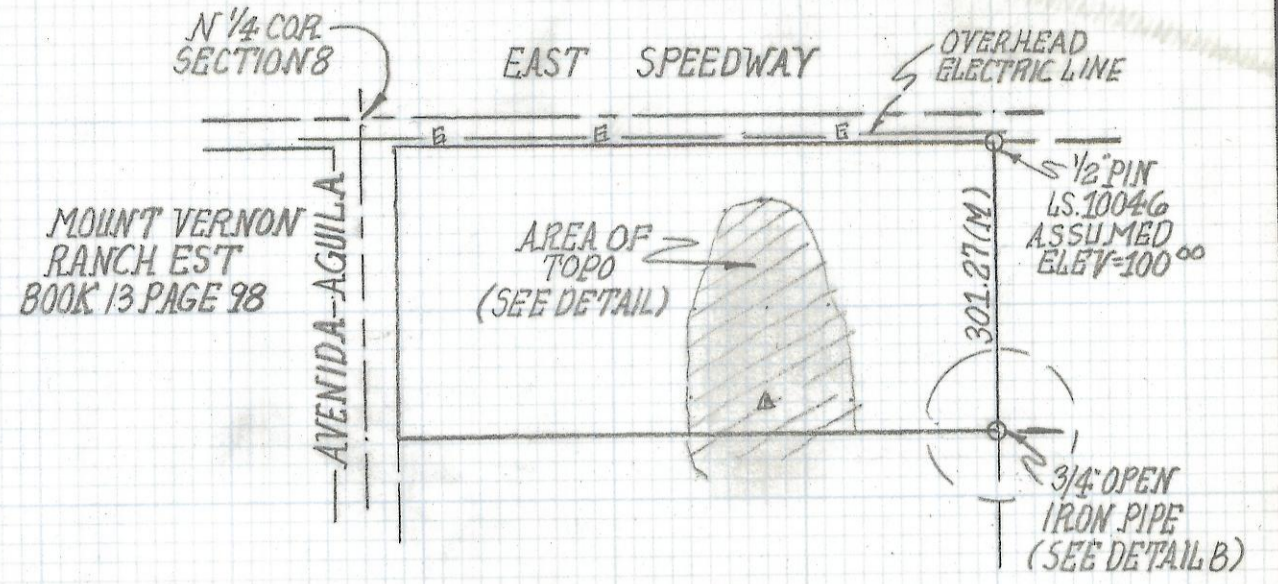


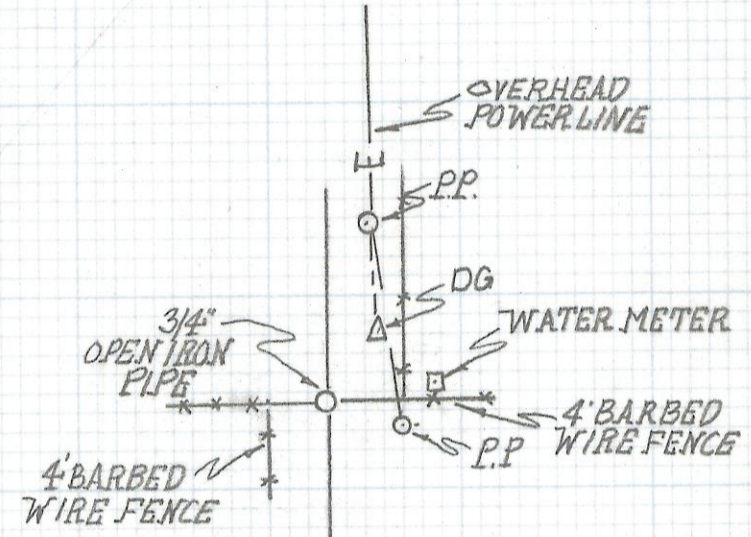
DISCLAIMER:

This unrecorded Record of Survey was donated to the City of Tucson. The City of Tucson provides this data for your personal use "as is." Additionally, the City of Tucson provides this information with the understanding that it is not guaranteed to be accurate, correct or complete and conclusions drawn from such information are the responsibility of the user.

GAS LINE
DOCKET 3838 PAGE 205



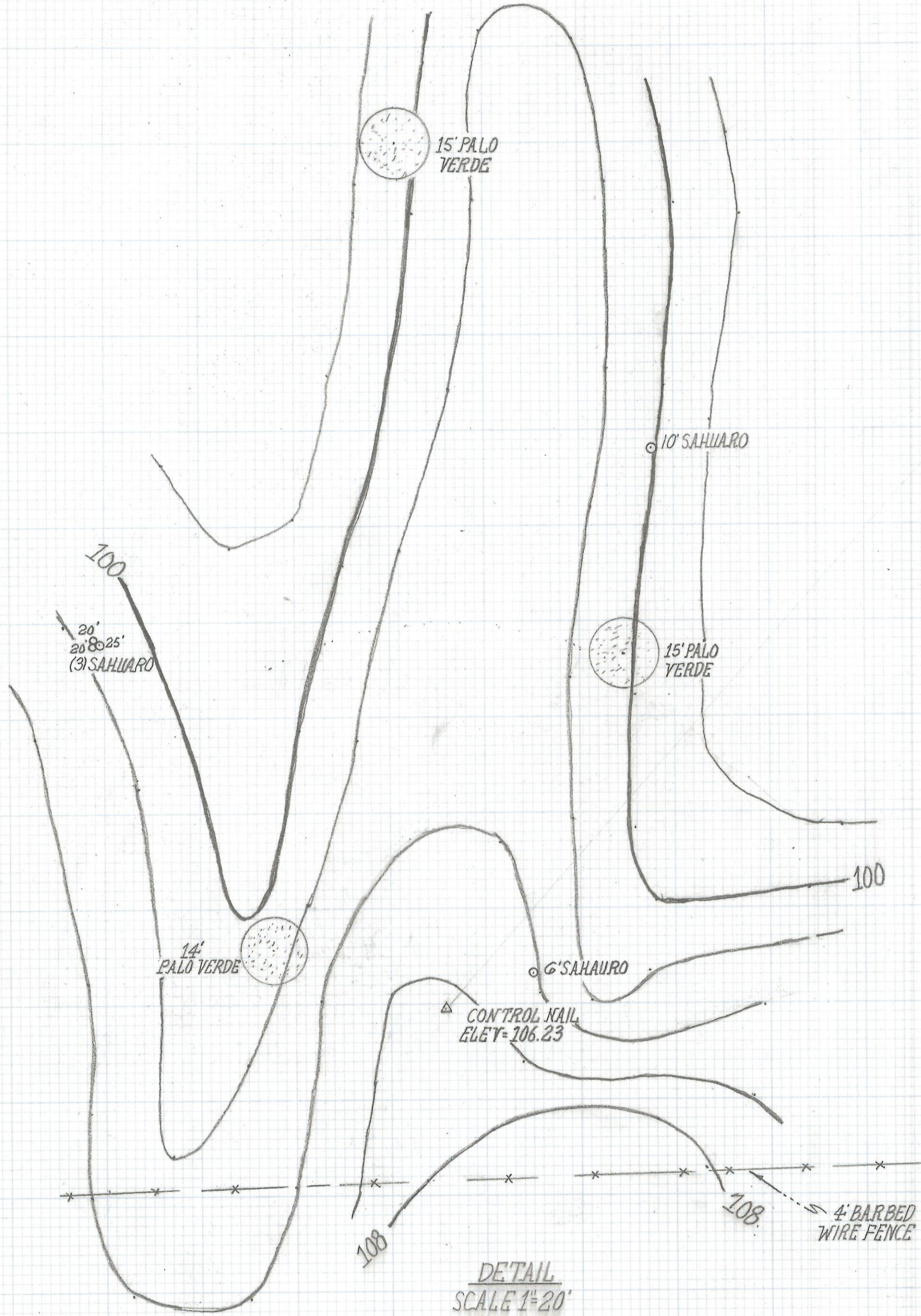
LOCATION MAP
N 1/2 NW 1/4, NW 1/4, NE 1/4
SEC 8, R16E T14S
G.S.R.B.M. PIMA COUNTY
ARIZONA
SCALE 1"=200'



DETAIL
SCALE 1"=20'

NOTES

- (1) THIS IS NOT A BOUNDARY SURVEY
- (2) CONTOUR INTERVAL 2 FEET
- (3) BENCHMARK ELEVATION 100.00 ASSUMED TOP OF 1/2" PIN MKD LS. 10046 N.E. CORNER OF PROPERTY



TOPOGRAPHICAL SURVEY
OF

A PORTION OF THE NORTH HALF OF THE NORTHWEST
OF THE NORTHWEST QUARTER OF THE NORTHEAST QUARTER
SECTION 8, TOWNSHIP 14 SOUTH RANGE 16 EAST GILA AND
SALT RIVER BASE AND MERIDIAN PIMA COUNTY, ARIZONA.



REVISIONS DATE

RFM	ROBERT F. MELLEN	DATE: 4-6-94
	REGISTERED LAND SURVEYOR	DR BY: EMT CK BY: RFM
	1250 W. MOHAVE ST. TULSON, ARIZONA	JOB NO. 94-48
	(602) 888-1012 SCALE: 1"=20'	SHEET 1 OF 2

Z-2017-127