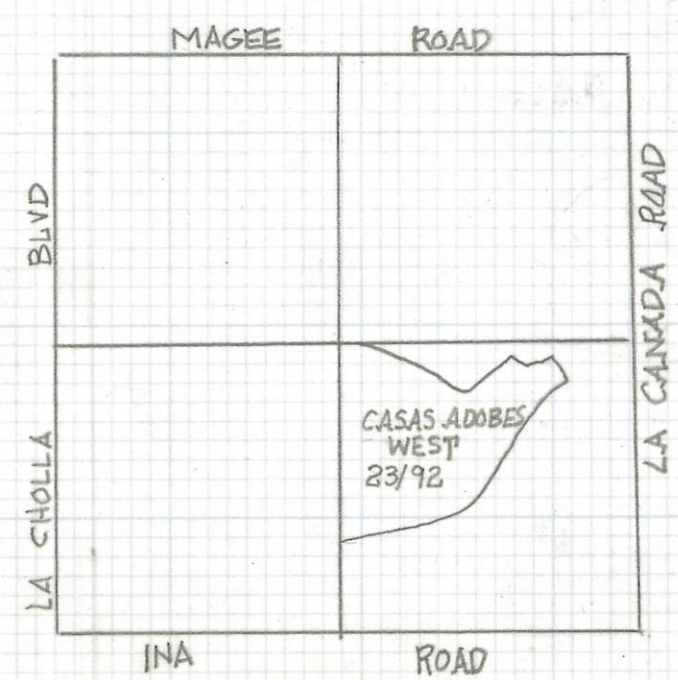
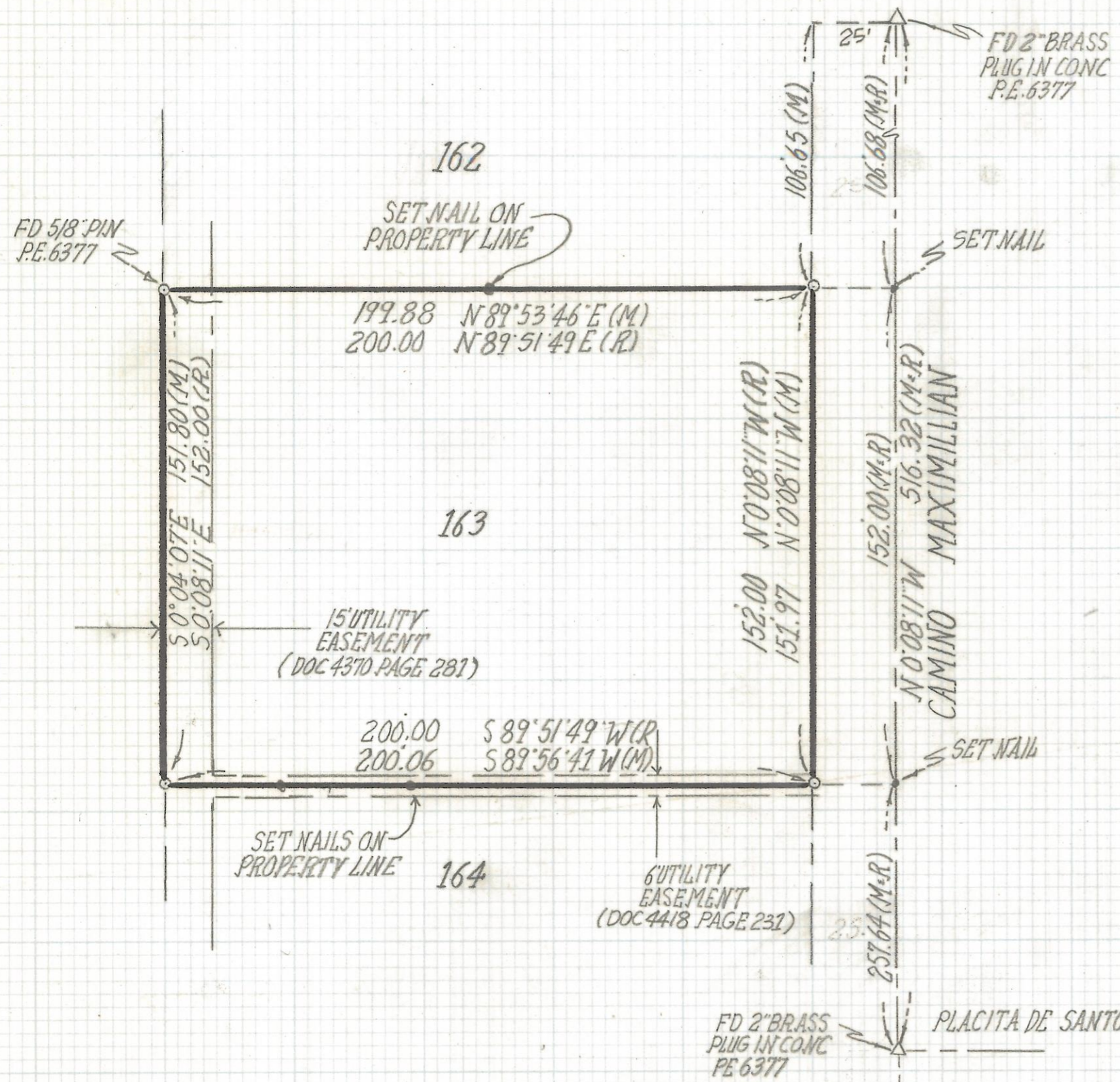
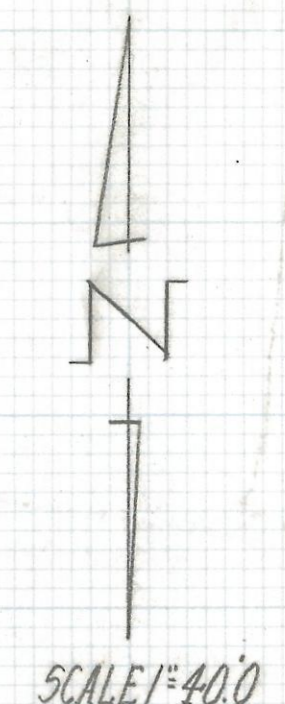


DISCLAIMER:

This unrecorded Record of Survey was donated to the City of Tucson. The City of Tucson provides this data for your personal use "as is." Additionally, the City of Tucson provides this information with the understanding that it is not guaranteed to be accurate, correct or complete and conclusions drawn from such information are the responsibility of the user.



LOCATION PLAN
 SCALE 3"=1 MILE
 SECTION 34 T-12-S R-13-E G-5-R-B-E-M
 PIMA COUNTY ARIZONA

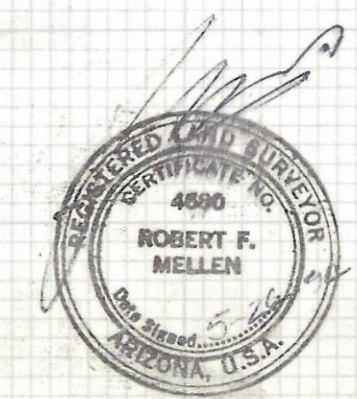


NOTES

- (1) ♂ INDICATES END 1/2" PIN MKD P.E. 6377 UNLESS NOTED
- (2) M- MEASURED
- (3) R- MAP OR DEED RECORD
- (4) * BASIS OF BEARINGS N 0° 08' 11" W CENTERLINE CAMINO MAXIMILLIAN PER CASAS ADOBES WEST BOOK 23 PAGE 92 MAPS AND PLATS

RESULTS OF SURVEY

OF LOT 163 CASAS ADOBES WEST AS RECORDED IN BOOK 23 OF MAPS AND PLATS AT PAGE 92 IN THE OFFICE OF THE PIMA COUNTY RECORDER, PIMA COUNTY ARIZONA



ROBERT F. MELLEN
 REGISTERED LAND SURVEYOR
 TUCSON, ARIZONA
 JOB #94-77