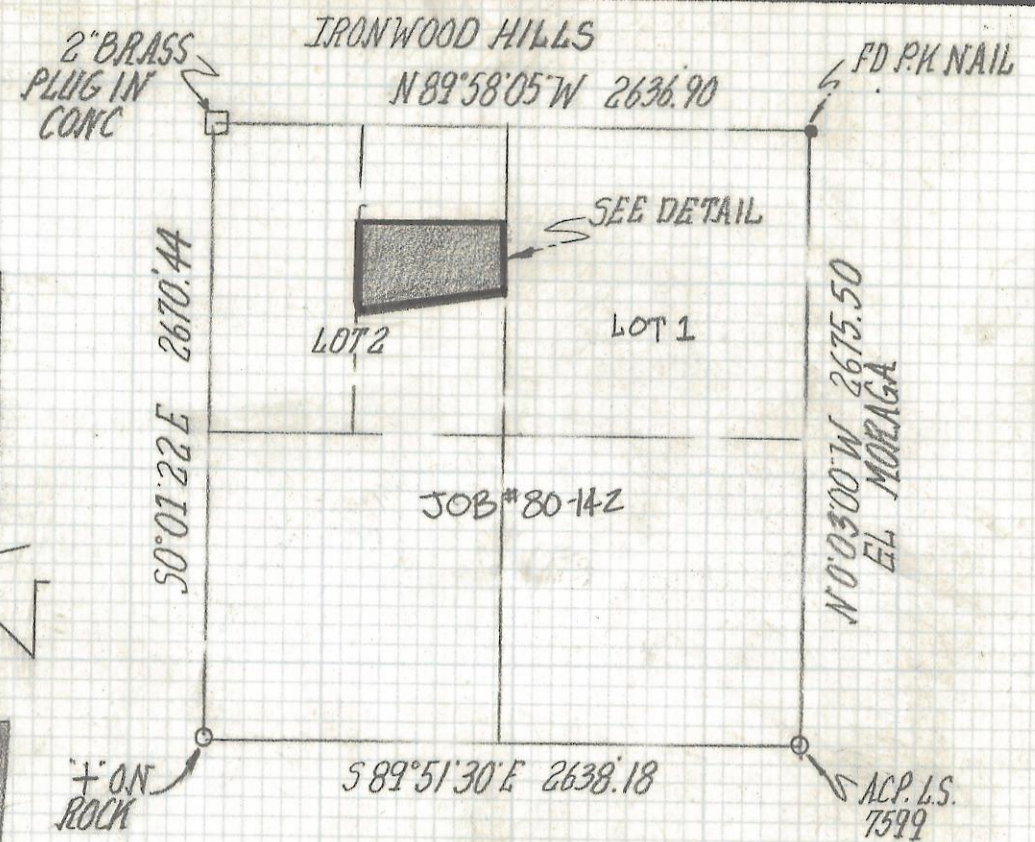
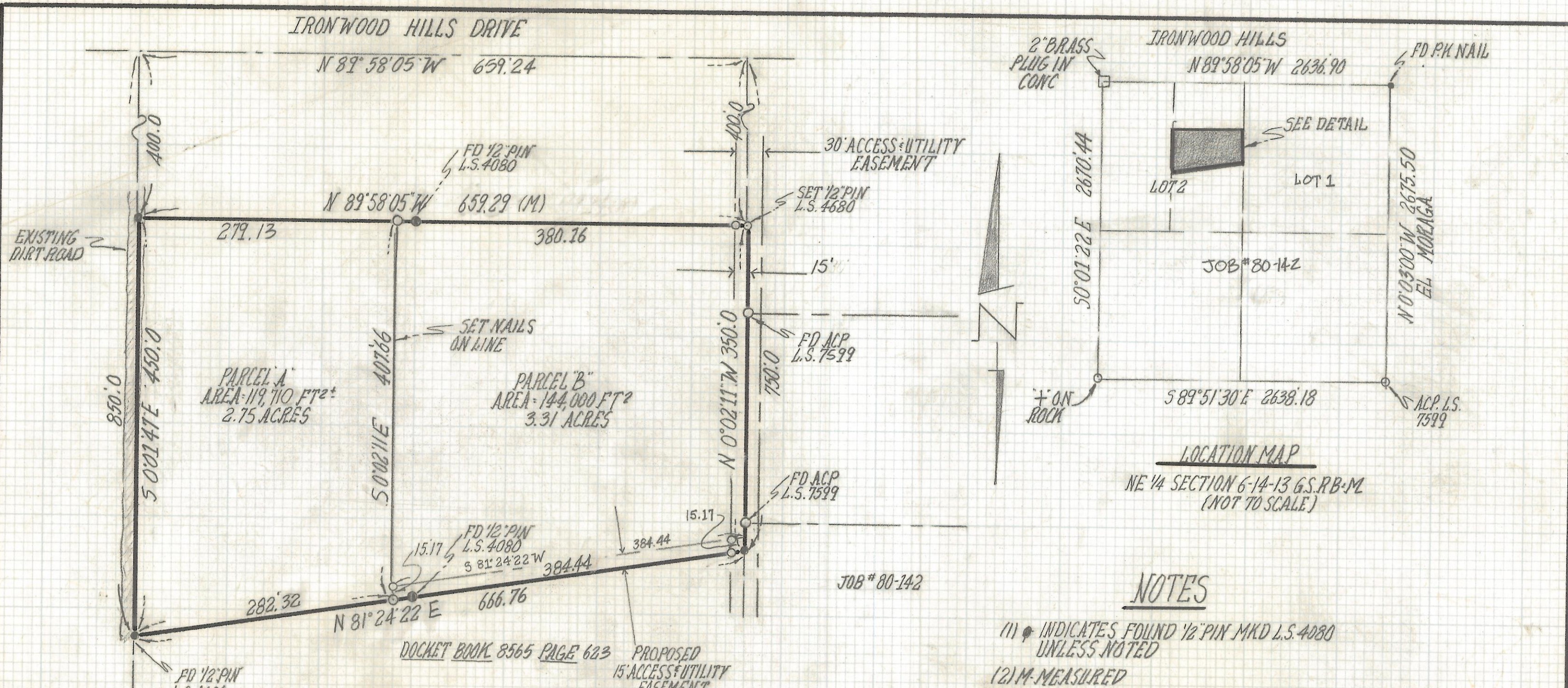


DISCLAIMER:

This unrecorded Record of Survey was donated to the City of Tucson. The City of Tucson provides this data for your personal use "as is." Additionally, the City of Tucson provides this information with the understanding that it is not guaranteed to be accurate, correct or complete and conclusions drawn from such information are the responsibility of the user.



LOCATION MAP
NE 1/4 SECTION 6-14-13 G.S. RB-M
(NOT TO SCALE)

NOTES

- (1) ● INDICATES FOUND 1/2" PIN MKD L.S. 4080 UNLESS NOTED
- (2) M- MEASURED
- (3) R- MAP OR DEED RECORD
- (4) BASIS OF BEARINGS N 0° 03' 00" W EAST LINE SECTION 6-14-13 PER GLO PLAT
- (5) ♀ INDICATES SET 1/2" PIN MKD L.S. 4680 UNLESS NOTED
- (6) THIS SURVEY, BASED ON JOB # 80-142

DETAIL
SCALE 1"=100' 0"

RESULTS OF SURVEY

OF A PORTION OF THE EAST HALF OF LOT 2 SECTION 6, TOWNSHIP 14 SOUTH, RANGE 13 EAST, GILA AND SALT RIVER BASE AND MERIDIAN PIMA COUNTY, ARIZONA.



ROBERT F. MELLEN
REGISTERED LAND SURVEYOR
TUCSON, ARIZONA
JOB # 94-87