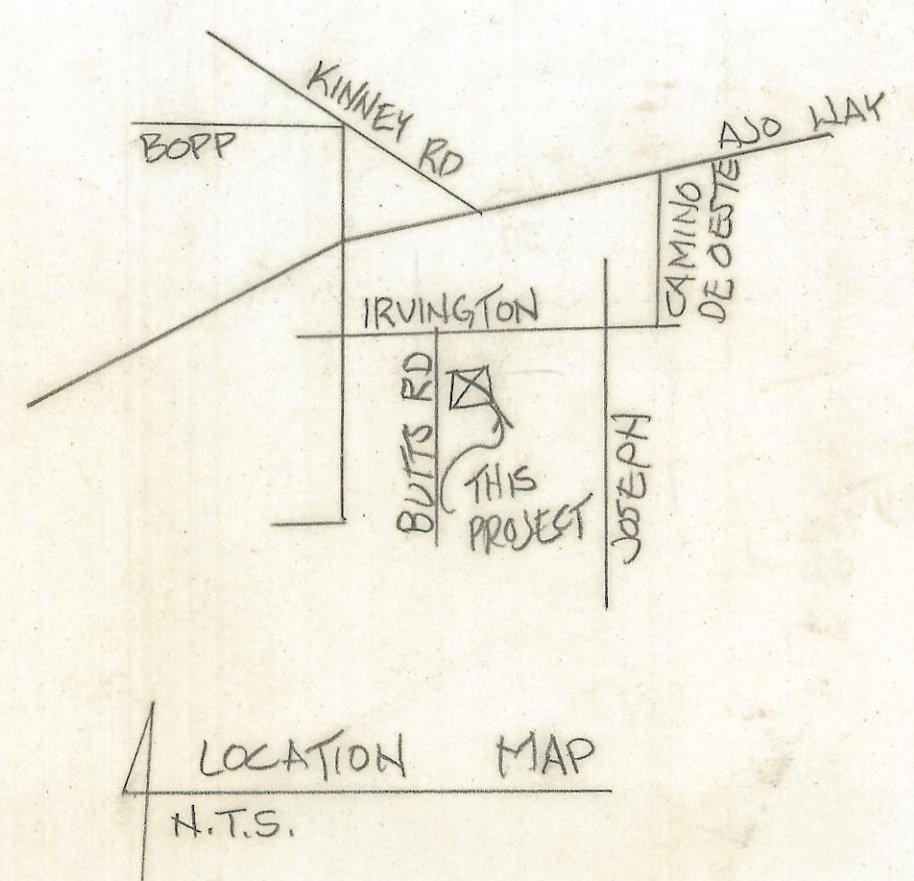
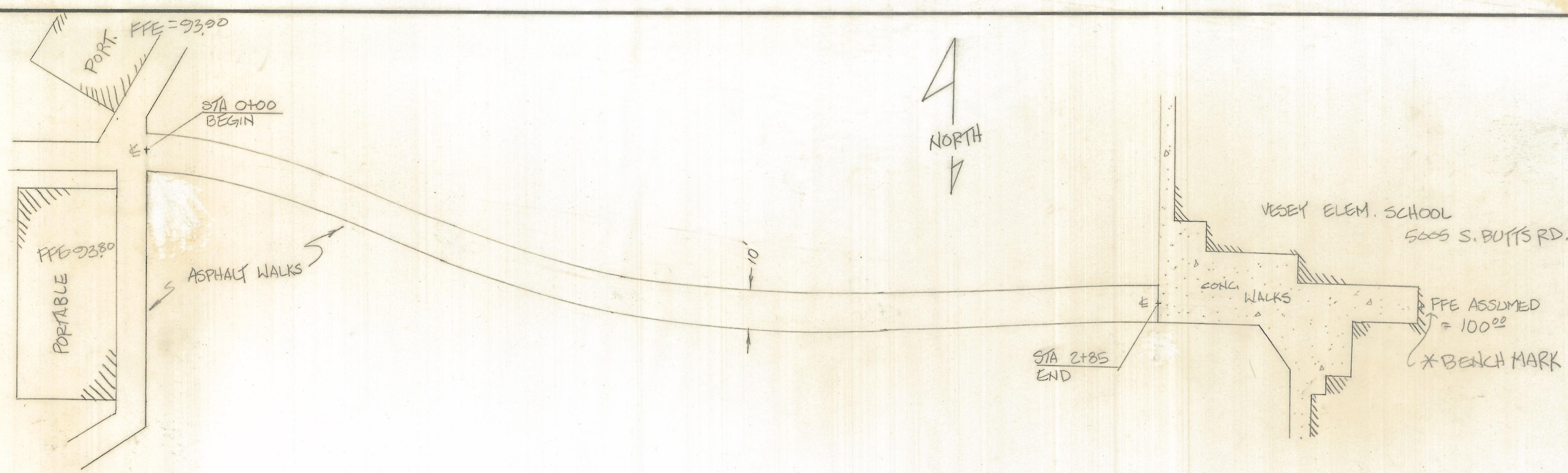


DISCLAIMER:

This unrecorded Record of Survey was donated to the City of Tucson. The City of Tucson provides this data for your personal use "as is." Additionally, the City of Tucson provides this information with the understanding that it is not guaranteed to be accurate, correct or complete and conclusions drawn from such information are the responsibility of the user.



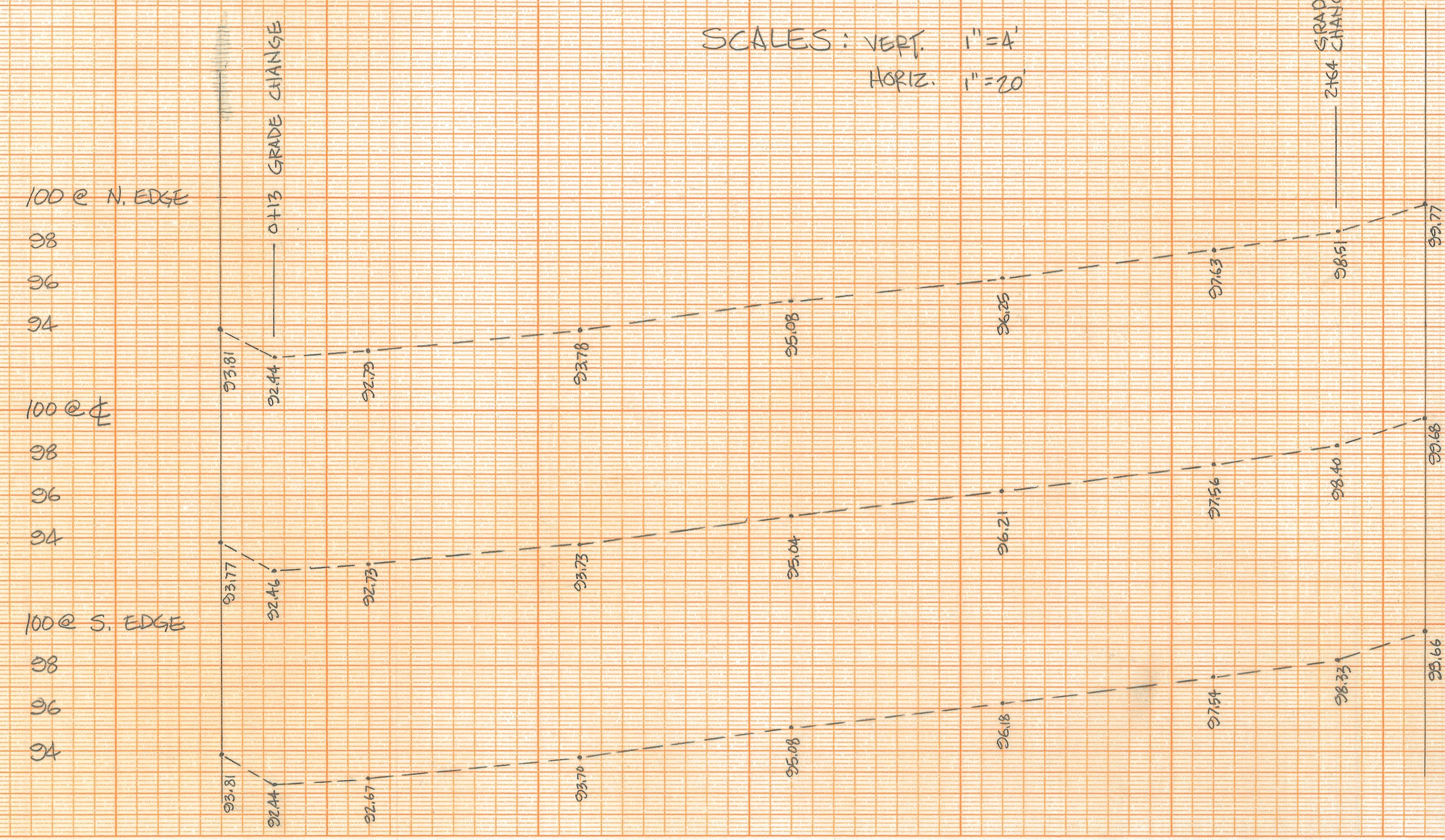
NOTE: BLDG LOCATION FROM HANSON PLAN, PROJ. NO. 12A01 SHT. A-1 PROFILE IS TO SCALE

RESULTS OF SURVEY

OF A PORTION OF AN ASPHALT RAMP LOCATED AT VESEY ELEM. SCHOOL, SECTION 1 OF TOWNSHIP 15 SOUTH, RANGE 12 EAST, G. & S. R. B. & M., PIMA COUNTY, ARIZONA.

STA 0+00 BEGIN
0+35
0+85
1+35
1+85
2+35
2+85

SCALES: VERT. 1"=4'
HORIZ. 1"=20'



"CLEARPRINT" PROFILE PLAN PLATE A
"CLEARPRINT PAPER CO"
MADE IN U.S.A.

"CLEARPRINT" PROFILE PLAN PLATE A
"CLEARPRINT PAPER CO"
MADE IN U.S.A.

REVISION	DATE	PLAN & PROFILE OF HANDICAP PATH VESEY ELEMENTARY SCHOOL	
		ROBERT P. MELLEN REGISTERED LAND SURVEYOR 1250 W. MOHAVE ST TUCSON, ARIZONA 85705 (602) 888-1012	
DRAWN BY: GMM		CK. BY: RFM	DATE: 6-24-04
JOB NO. 04-08		SCALE: VERT. 1"=4' HORIZ. 1"=20'	SHEET 1 OF 1