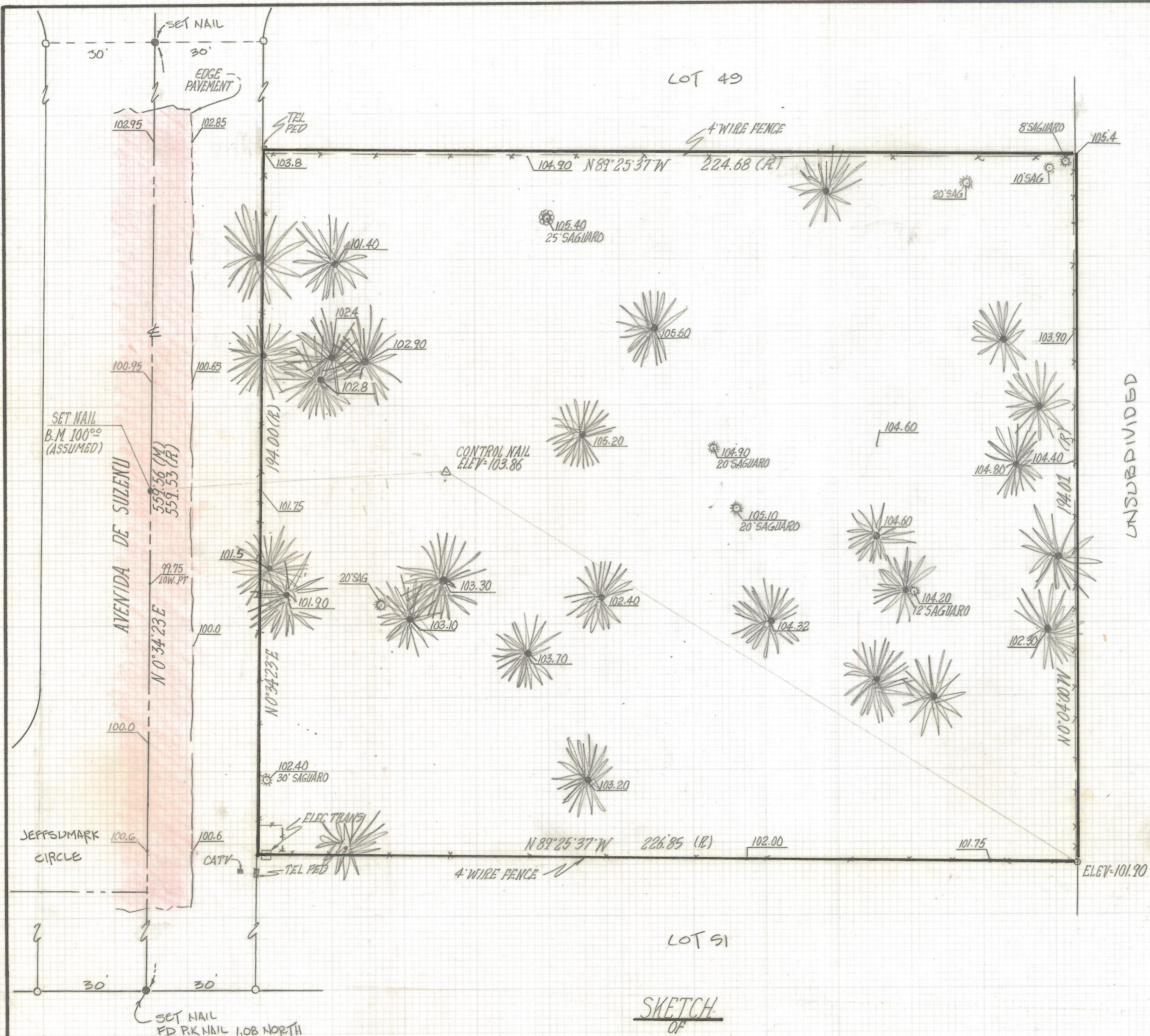


DISCLAIMER:

This unrecorded Record of Survey was donated to the City of Tucson. The City of Tucson provides this data for your personal use "as is." Additionally, the City of Tucson provides this information with the understanding that it is not guaranteed to be accurate, correct or complete and conclusions drawn from such information are the responsibility of the user.



- NOTES**
- (1) ♀ INDICATES FOUND 1/2" PIN MKD L.S. 1144
 - (2) M - MEASURED
 - (3) R - MAP OR DEED RECORD
 - (4) THIS IS NOT A BOUNDARY SURVEY
 - (5) 102.85 INDICATES EXISTING GROUND ELEVATION
 - (6) * INDICATES MESQUITE TREE 15' TO 20' IN HEIGHT

SKETCH
OF

EXISTING MAJOR VEGETATION AND ELEVATIONS OVER LOT 50 HONOKAM ESTATES RECORDED IN BOOK 25 OF MAPS AND PLATS AT PAGE 44 IN THE OFFICE OF THE PIMA COUNTY RECORDER PIMA COUNTY ARIZONA.



ROBERT F. MELLEN
REGISTERED LAND SURVEYOR
TUCSON, ARIZONA
JOB # 94-128

Z-2017-163