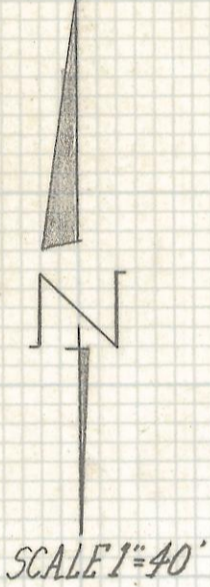
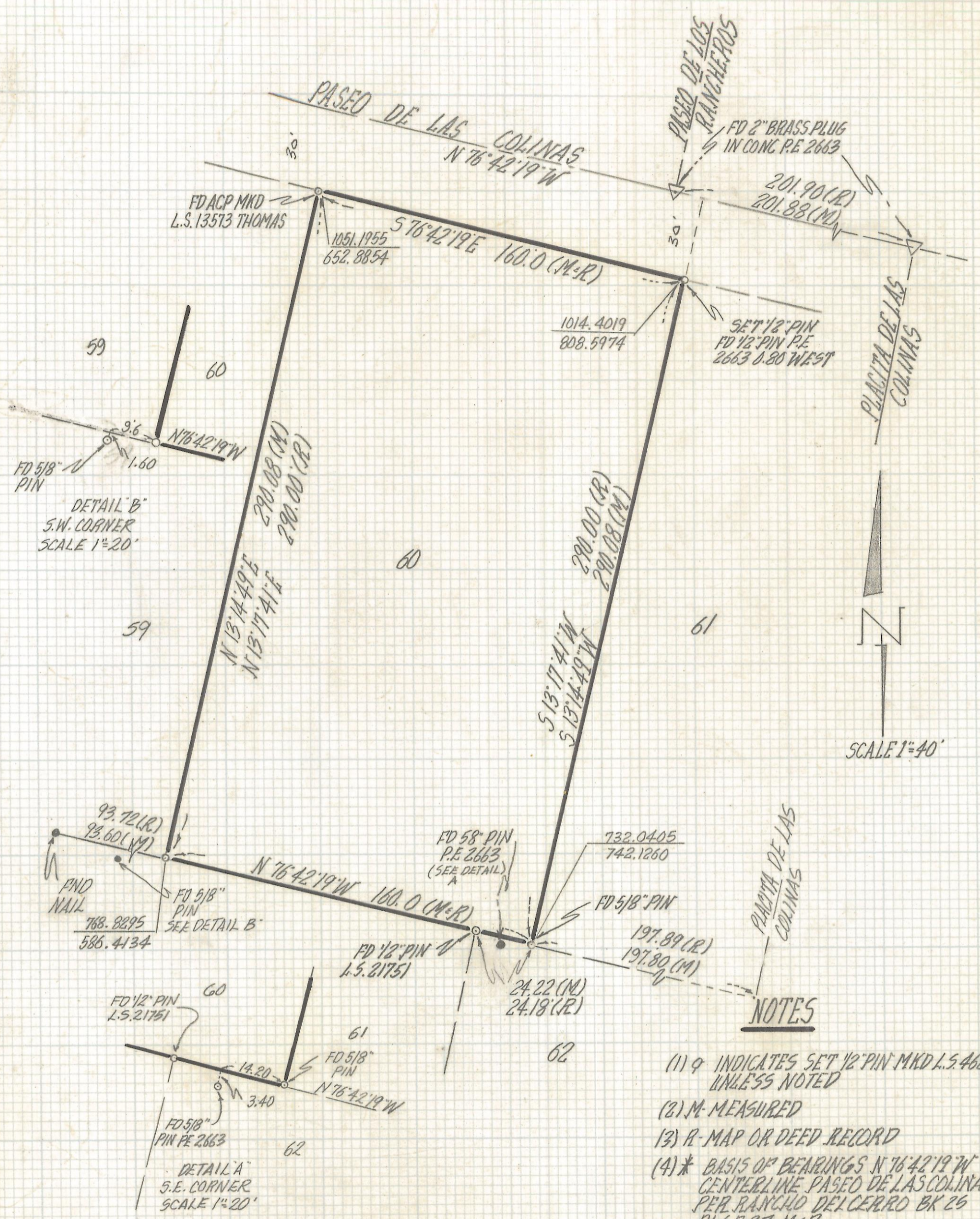


DISCLAIMER:

This unrecorded Record of Survey was donated to the City of Tucson. The City of Tucson provides this data for your personal use "as is." Additionally, the City of Tucson provides this information with the understanding that it is not guaranteed to be accurate, correct or complete and conclusions drawn from such information are the responsibility of the user.



RESULTS OF SURVEY

OF LOT 60 RANCHO DEL CERRO AS RECORDED IN BOOK 26 OF MAPS AND PLATS AT PAGE 37 IN THE OFFICE OF THE PIMA COUNTY RECORDER PIMA COUNTY ARZ.



Z-2017-164
 ROBERT F. MELLEN
 REGISTERED LAND SURVEYOR
 TUCSON ARIZONA
 JOB# 94-129

REVISED DETAILS A+B 10-6-94