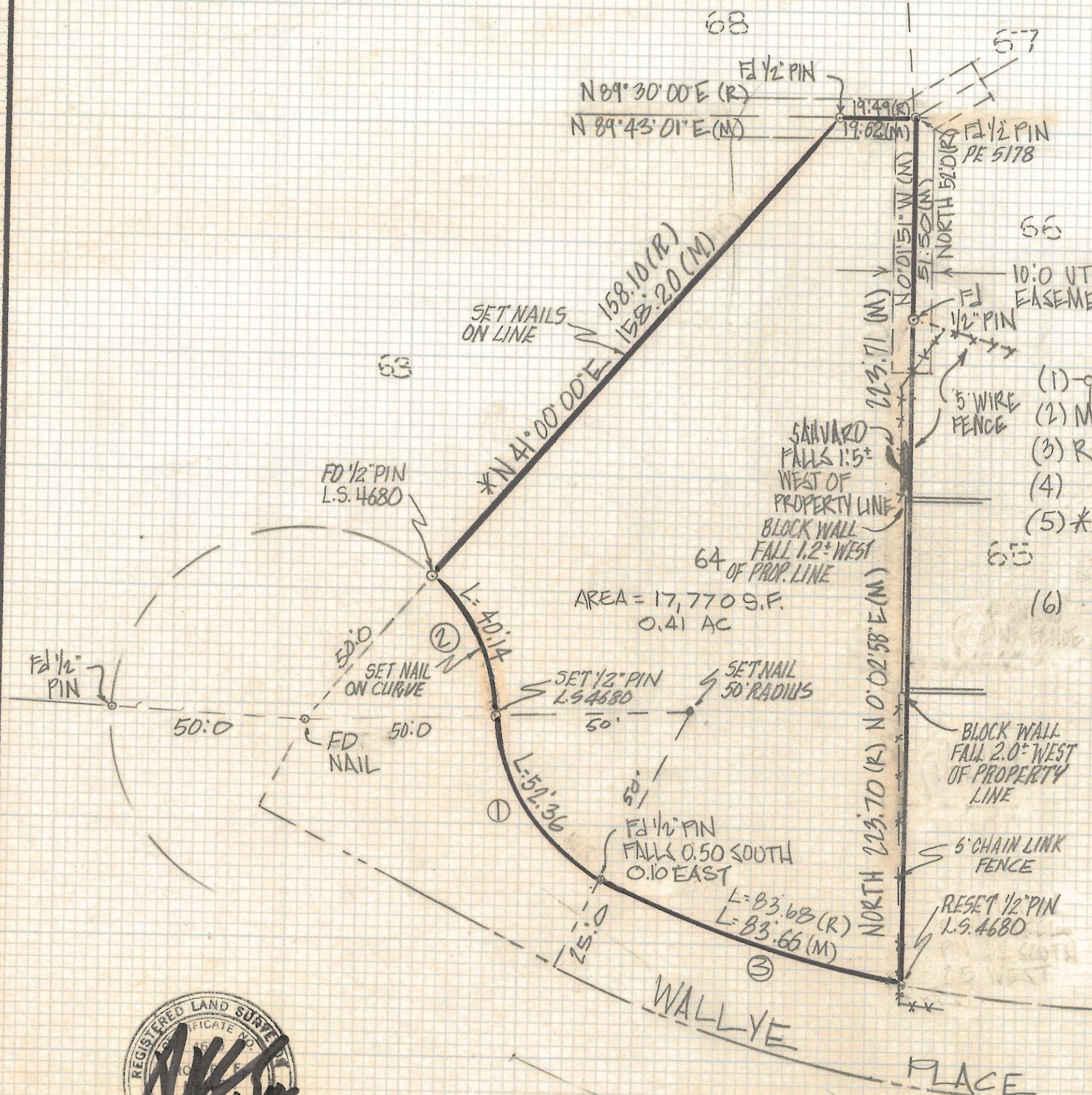
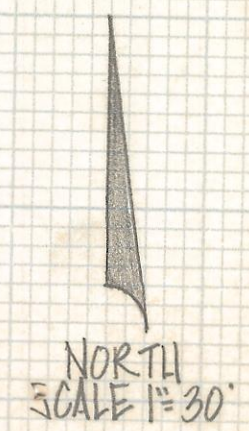


DISCLAIMER:

This unrecorded Record of Survey was donated to the City of Tucson. The City of Tucson provides this data for your personal use "as is." Additionally, the City of Tucson provides this information with the understanding that it is not guaranteed to be accurate, correct or complete and conclusions drawn from such information are the responsibility of the user.

CURVE DATA					
NO	RADIUS	DELTA	TANGENT	LENGTH	CHORD
1	50.0	60°00'00"	28.87	52.36	50.0
2	50.0	45°59'49"	21.22	40.14	39.07
3	300.0	15°58'38"	42.10	83.66	83.49

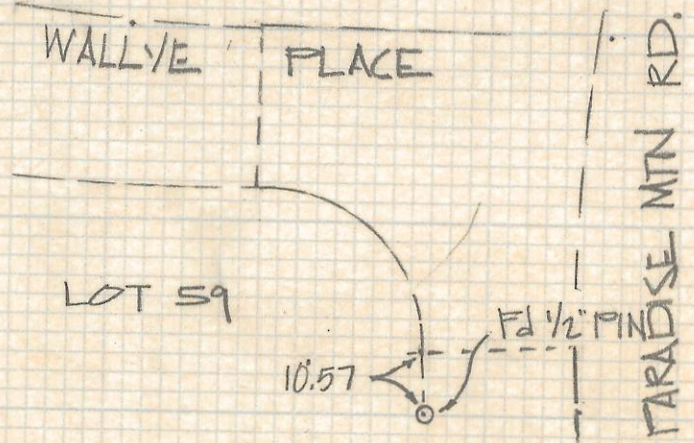


NOTES

- (1) - INDICATES SET 1/2" PIN MKD L.S. 4680 UNLESS NOTED
- (2) M - MEASURED
- (3) R - MAP OR DEED RECORD
- (4) SEE JOB #84-119
- (5) * BASIS OF BEARINGS N 41°00'00" E NORTHWESTERLY LINE LOT 64 PARADISE MOUNTAIN ESTATES, BOOK 15 PAGE 56 MAPS AND PLATS.
- (6) SEE JOB #84-119

RESULTS OF SURVEY

OF LOT 64 PARADISE MOUNTAIN ESTATES RECORDED IN BOOK 15 OF MAPS AND PLATS AT PAGE 56 IN THE OFFICE OF THE PIMA COUNTY RECORDER PIMA COUNTY ARIZONA



ROBERT F. MELLEN
REGISTERED LAND SURVEYOR
TUCSON ARIZONA
JOB # 94-135

REVISED: RESURVEYED 9-8-94
REVISED: AREA 6/10/94 GJM

