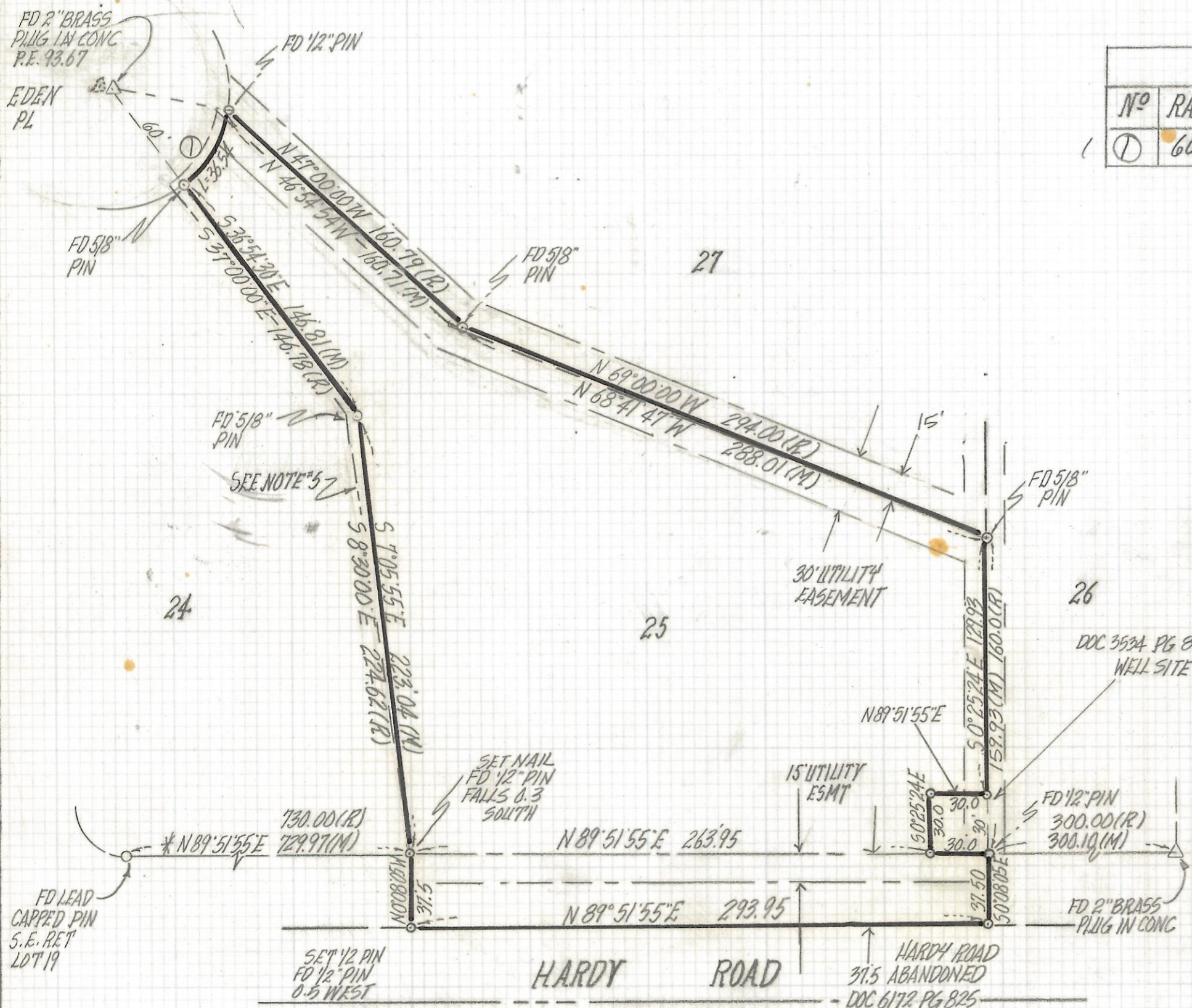


DISCLAIMER:

This unrecorded Record of Survey was donated to the City of Tucson. The City of Tucson provides this data for your personal use "as is." Additionally, the City of Tucson provides this information with the understanding that it is not guaranteed to be accurate, correct or complete and conclusions drawn from such information are the responsibility of the user.



CURVE DATA					
Nº	RADIUS	DELTA	TANGENT	LENGTH	CHORD
①	60.0	41°52'00	19.13	36.54	36.73



NOTES

- (1) ♀ INDICATES SET 1/2" PIN MKD I.S. 468D UNLESS NOTED
- (2) M- MEASURED
- (3) R- MAP OR DEED RECORD
- (4) * BASIS OF BEARINGS N 89° 51' 55" E SOUTH LINE SECTION 24-12-13 PER SHADOW MOUNTAIN EST. EAST BOOK 14 PAGE 93 MAPS AND PLATS
- (5) THE DASHED LINE IS BASED ON RECORD BEARINGS AND DISTANCES FROM KNOWN ORIGINAL MONUMENTS, SINCE ALL MAJOR MONUMENTS WERE FOUND, WE ACCEPTED THEM HOWEVER WE ARE UNCERTAIN ABOUT THE POSITION OF THE BRASS PLUG MARKED P.E. 9367.

RESULTS OF SURVEY

OF A PORTION OF LOT 25 OF SHADOW MOUNTAIN ESTATES EAST AS RECORDED IN BOOK 14 OF MAPS AND PLATS AT PAGE 93 AND A PORTION OF HARDY ROAD RECORDED IN DOCKET 6172 PAGE 825 IN THE OFFICE OF THE PIMA COUNTY RECORDER PIMA COUNTY ARIZONA



ROBERT F. MELLEN
REGISTERED LAND SURVEYOR
TUCSON ARIZONA
JOB# 94-144