

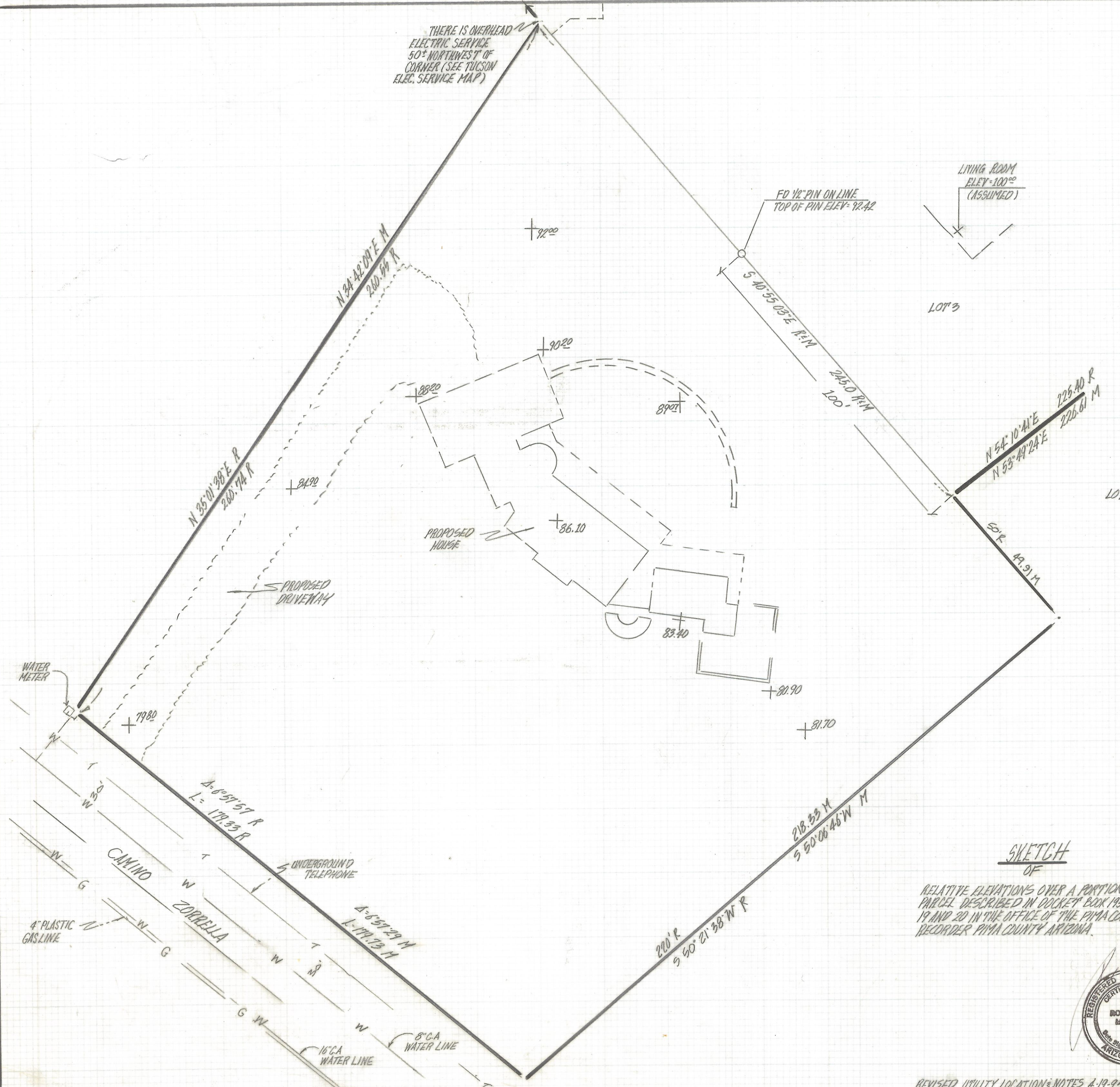
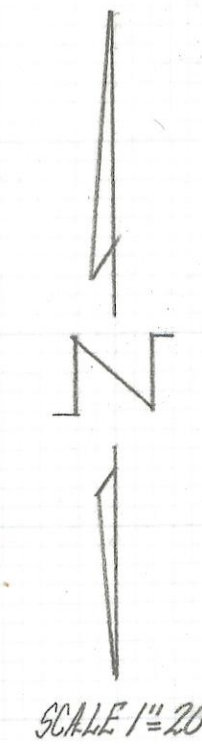
DISCLAIMER:

This unrecorded Record of Survey was donated to the City of Tucson. The City of Tucson provides this data for your personal use "as is." Additionally, the City of Tucson provides this information with the understanding that it is not guaranteed to be accurate, correct or complete and conclusions drawn from such information are the responsibility of the user.

THERE IS OVERHEAD
ELECTRIC SERVICE
50' NORTHWEST
OF CORNER (SEE TUCSON
ELEC. SERVICE MAP)

LIVING ROOM
ELEV. 100.00
(ASSUMED)

FD 1/2" PIN ON LINE
TOP OF PIN ELEV. 92.42



LOT 2

NOTES

- (1) SEE BOUNDARY SURVEY BY ROBERT F. MELLEN R.L.S. JOB # 94-97
- (2) BENCHMARK ASSUMED ELEVATION 100.00 FINISH FLOOR OF LIVING ROOM LOCATED AT 6225 CAMINO ESCALANTE
- (3) LOCATION OF UTILITIES SHOWN ON THIS DRAWING WERE TAKEN FROM MAPS PROVIDED BY THE UTILITY COMPANIES, BEFORE DIGGING AND IF DESIGN IS CRITICAL CALL BLUE STAKE 792-2211
- (4) U.S. WEST TELEPHONE SERVICE MAPS WERE NOT AVAILABLE.
- (5) THERE IS NO SEWER SERVING THIS PROPERTY, FOR LOCATION OF NEAREST LINES SEE PIMA COUNTY WASTE WATER SEWER MAP

SKETCH
OF

RELATIVE ELEVATIONS OVER A PORTION OF THAT PARCEL DESCRIBED IN DUCKETT BOOK 1954 AT PAGE 19 AND 20 IN THE OFFICE OF THE PIMA COUNTY RECORDER PIMA COUNTY ARIZONA.



ROBERT F. MELLEN
REGISTERED LAND SURVEYOR
TUCSON, ARIZONA
JOB # 94-150

REVISED UTILITY LOCATION & NOTES 4-19-95