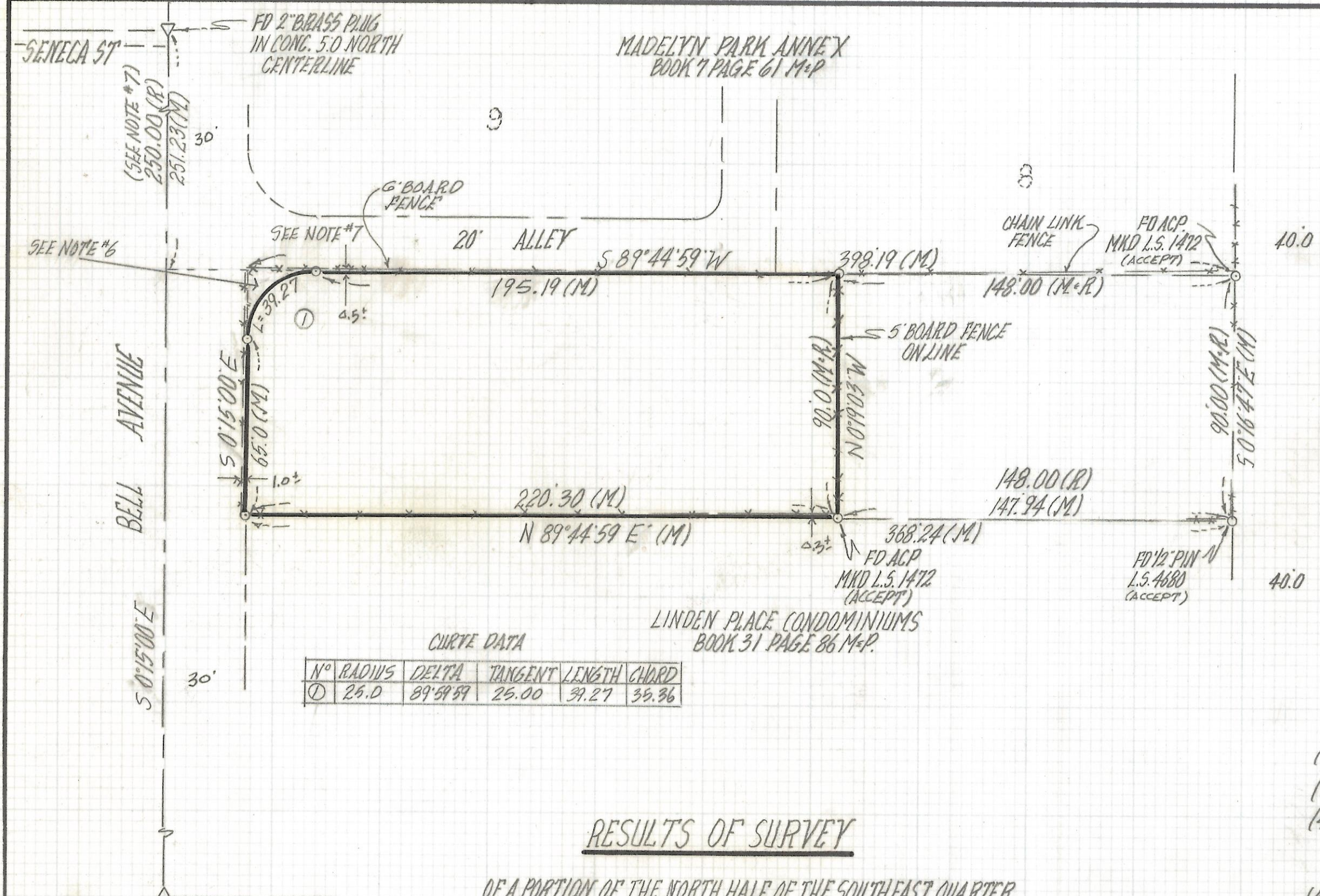


# **DISCLAIMER:**

**This unrecorded Record of Survey was donated to the City of Tucson. The City of Tucson provides this data for your personal use "as is." Additionally, the City of Tucson provides this information with the understanding that it is not guaranteed to be accurate, correct or complete and conclusions drawn from such information are the responsibility of the user.**



**CURVE DATA**

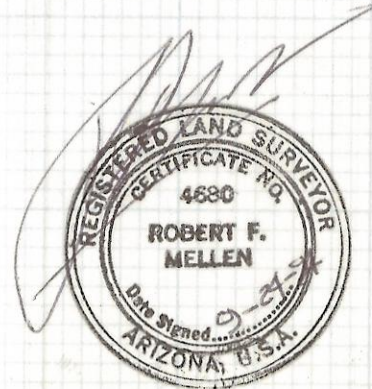
N°	RADIUS	DELTA	TANGENT	LENGTH	CHORD
①	25.0	89°59'59"	25.00	39.27	39.36

**RESULTS OF SURVEY**

OF A PORTION OF THE NORTH HALF OF THE SOUTHEAST QUARTER OF THE NORTHEAST QUARTER OF SECTION 3, TOWNSHIP 14 SOUTH RANGE 14 EAST GILA AND SALT RIVER BASE AND MERIDIAN PIMA COUNTY, ARIZONA

**NOTES**

- (1) ① INDICATES SET 1/2" PIN MKD L.S. 4680 UNLESS NOTED
- (2) M-MEASURED
- (3) R-MAP OR DEED RECORD
- (4) \* BASIS OF BEARINGS N0°15'00"W CENTERLINE BELL AVENUE PER MADELYN PARK ANNEX BOOK 7 PAGE 61 M&P
- (5) SEE JOB # 78-105
- (6) THIS PORTION OF THE 20.0' ALLEY WAS DEDICATED BY MADELYN PARK ANNEX BOOK 7 PAGE 61 M&P
- (7) DUE TO A POSSIBLE CONFLICT IN MONUMENTATION THE NORTH WEST CORNER COULD MOVE 1.3'± NORTH. MOST EVIDENCE SUPPORTS THE PARCEL AS SURVEYED.



ROBERT F. MELLEN  
REGISTERED LAND SURVEYOR  
TUCSON, ARIZONA  
JOB # 94-153