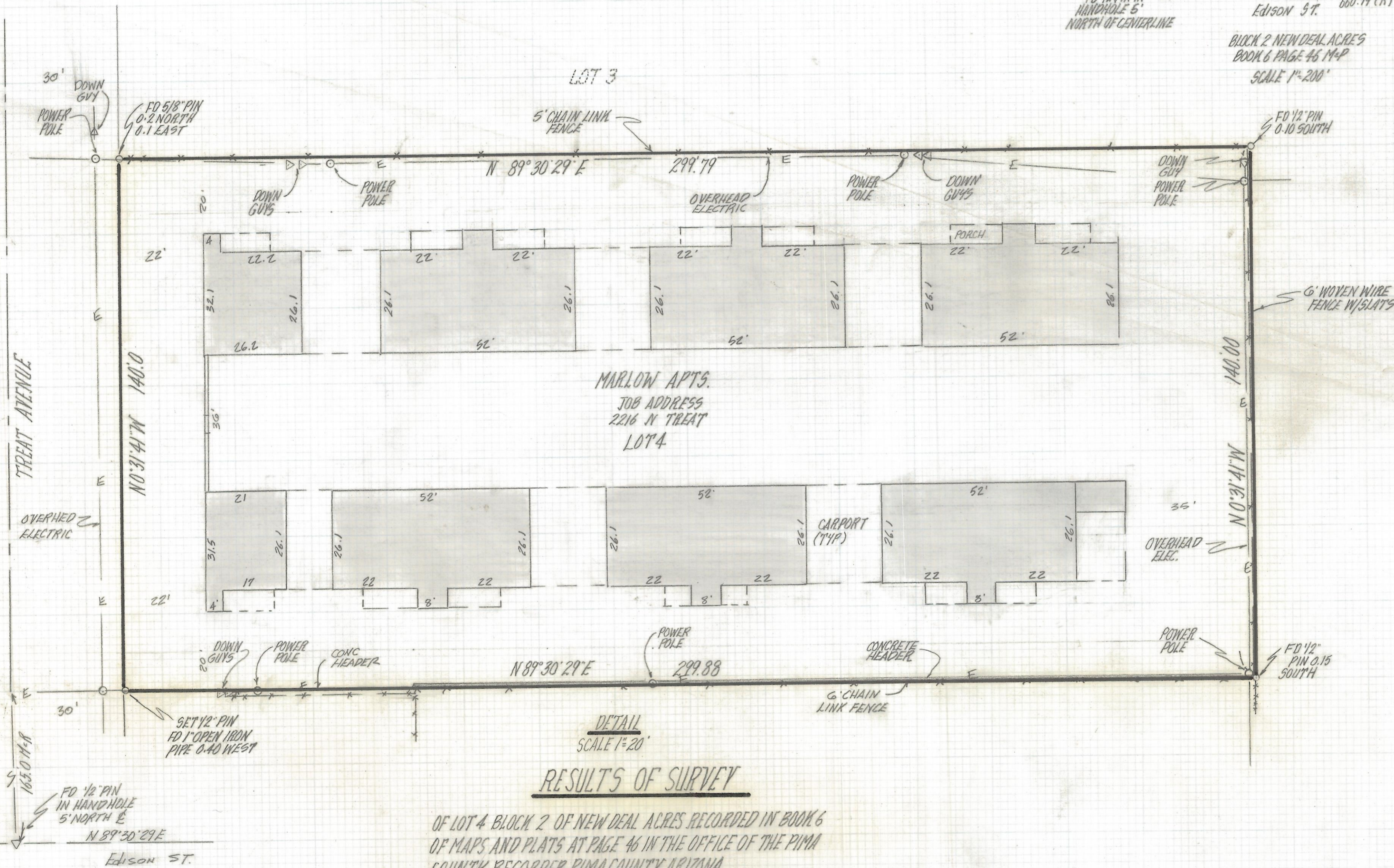
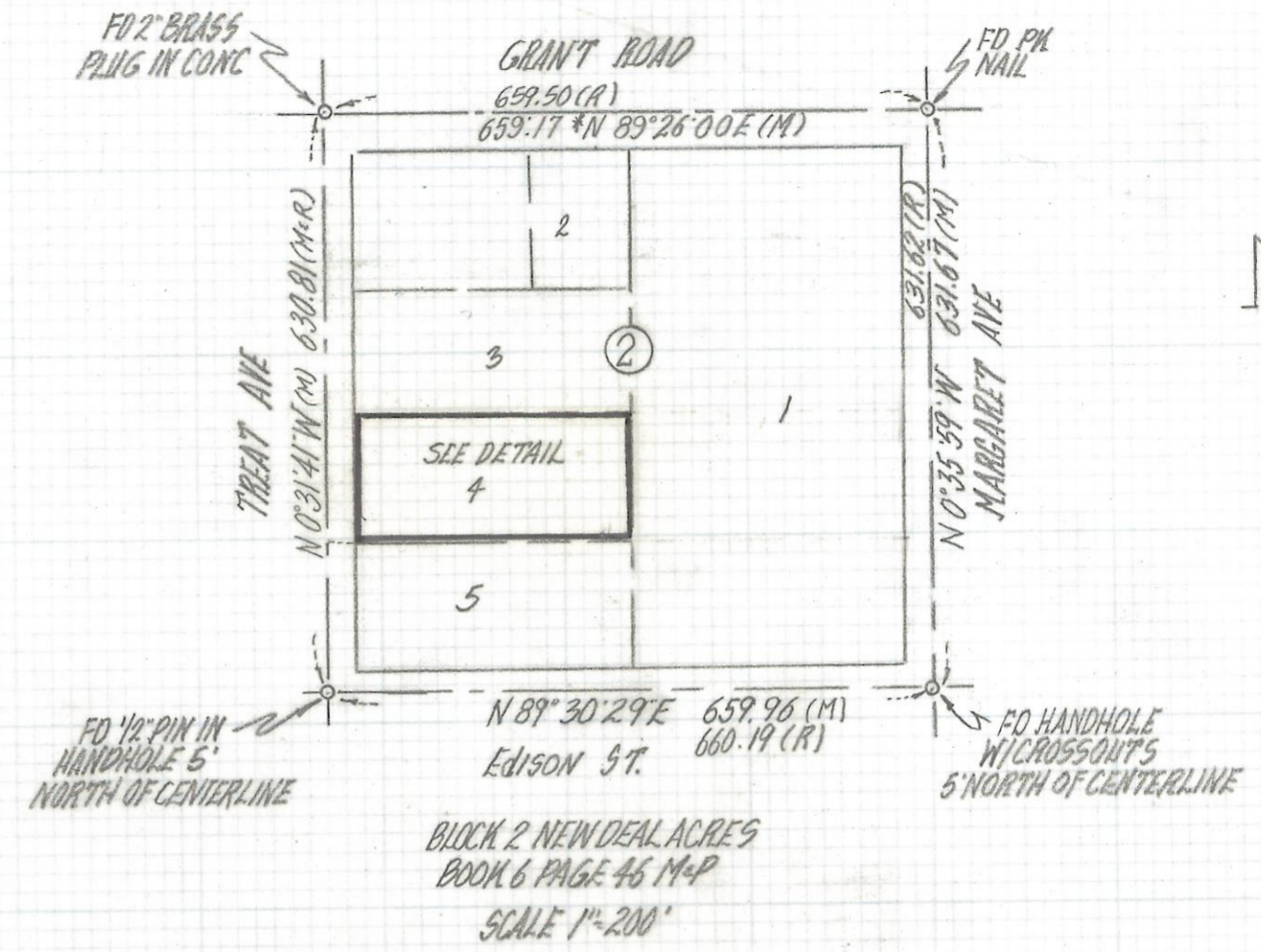


# **DISCLAIMER:**

**This unrecorded Record of Survey was donated to the City of Tucson. The City of Tucson provides this data for your personal use "as is." Additionally, the City of Tucson provides this information with the understanding that it is not guaranteed to be accurate, correct or complete and conclusions drawn from such information are the responsibility of the user.**

NOTES

- (1)  $\phi$  INDICATES SET 1/2" PIN MKD L.S. 4680 UNLESS NOTED
- (2) M - MEASURED
- (3) R - MAP OR DEED RECORD
- (4) \* BASIS OF BEARINGS N 89° 26' 00" E CENTERLINE GRANT RD PER NEW DEAL ACRES BOOK 6 PAGE 46 MAPS & PLATS.
- (5) SEE JOB # 84-78

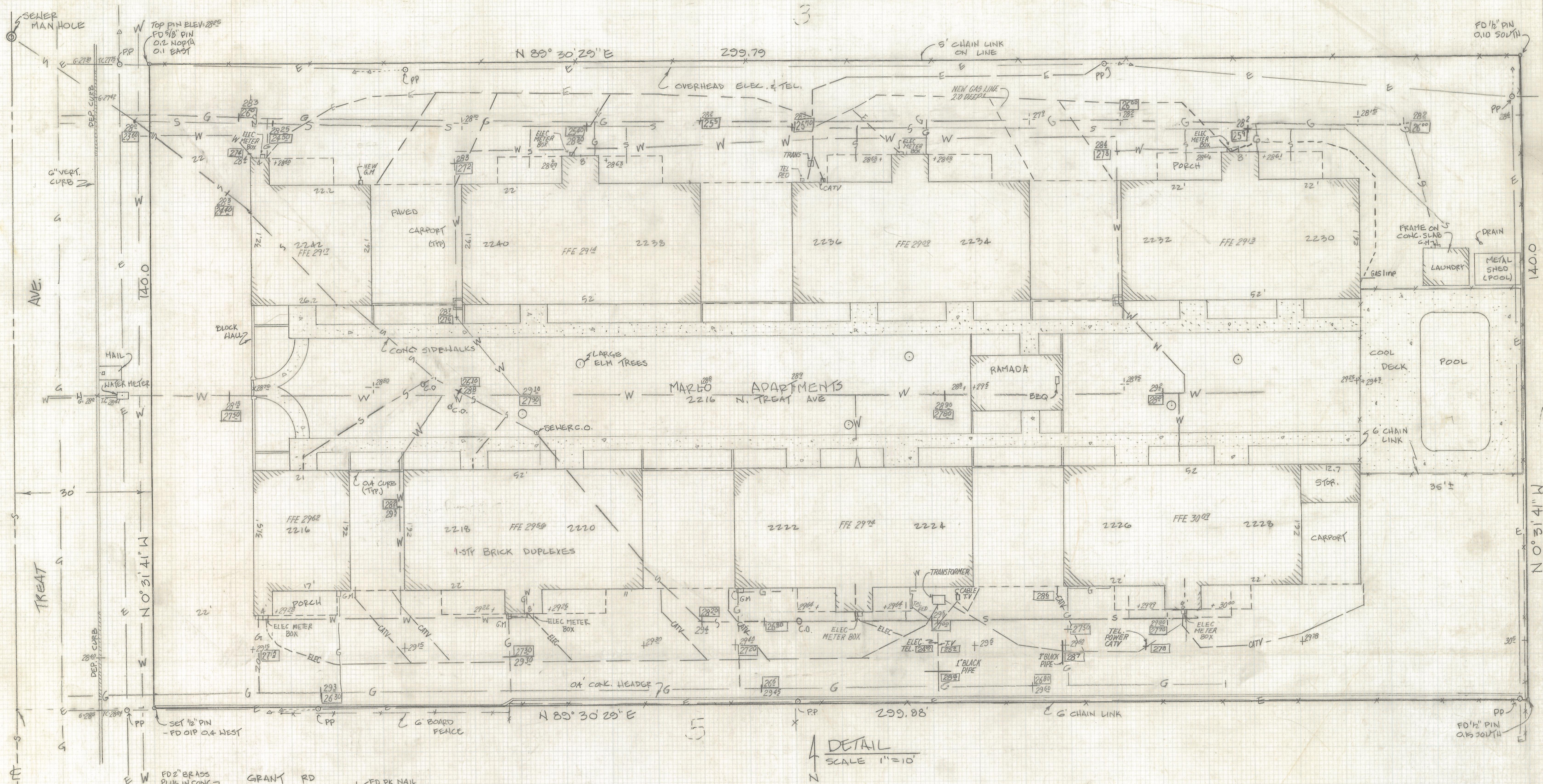


RESULTS OF SURVEY

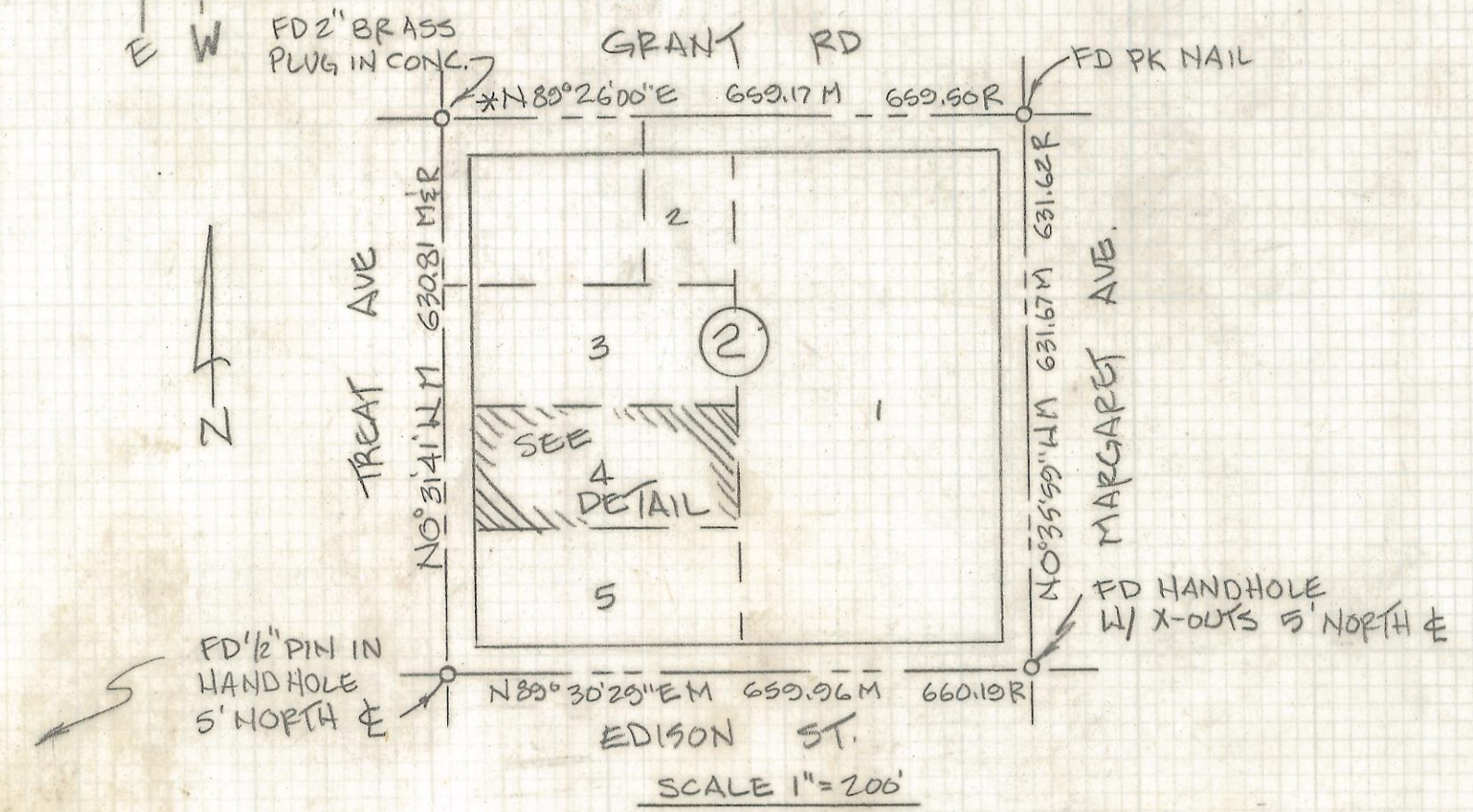
OF LOT 4 BLOCK 2 OF NEW DEAL ACRES RECORDED IN BOOK 6 OF MAPS AND PLATS AT PAGE 46 IN THE OFFICE OF THE PIMA COUNTY RECORDER PIMA COUNTY ARIZONA

ROBERT F. MELLER  
REGISTERED LAND SURVEYOR  
TUCSON, ARIZONA  
JOB # 94-160

Z-2017-181 1/2



DETAIL  
SCALE 1"=10'



BLOCK 2 NEW DEAL ACRES  
BK G PG 46 M&P  
PIMA COUNTY, ARIZONA

NOTES

- 1) P - INDICATES SET 1/2" PIN MARKED LS 4680 UNLESS NOTED
- 2) M - MEASURED
- 3) R - MAP OR DEED RECORD
- 4) \* BASIS OF BEARINGS - N 89° 26' 00" W & GRANT ROAD PER NEW DEAL ACRES BK G PG 46 MAPS AND PLATS
- 5) SEE JOB 24-78
- 6) PP POWER POLE
- 7) SEWER LINES AND HOUSE CONNECTIONS PLOTTED FROM CONSTRUCTION NOTES PIMA CO. WASTEWATER MANAGEMENT - LOCATION NOT VERIFIED IN FIELD
- 8) C.O. - SEWER CLEAN-OUT
- 9) BM. 1/2" PIN NE PROP. COR. BAYHORSE TAVERN) S.E. COR. TREAT & GRANT ROAD EL 2425.84 PER CITY OF TUCSON FIB 1119 PG 77
- 10) [2770] INDICATES ELEVATION OF UTILITIES

RESULTS OF SURVEY

OF LOT 4 OF BLOCK 2 OF NEW DEAL ACRES RECORDED IN BOOK G OF MAPS AND PLATS AT PAGE 46 IN THE OFFICE OF THE PIMA COUNTY RECORDER, PIMA COUNTY, ARIZONA.



ROBERT F. MELLEN  
REGISTERED LAND SURVEYOR  
TUCSON, ARIZONA  
JOB 24-16

Z-2017-181 7/2

REVISED 4-16-96 UTILITIES' ELEVATIONS  
REVISED 11-9-94 NORTH GAS LINE  
REVISED 10-25-94 GAS LINE, SEWER, POWER LINE ELEVATIONS  
REVISED 6-20-96 UNDERGROUND CITY-ELEC.