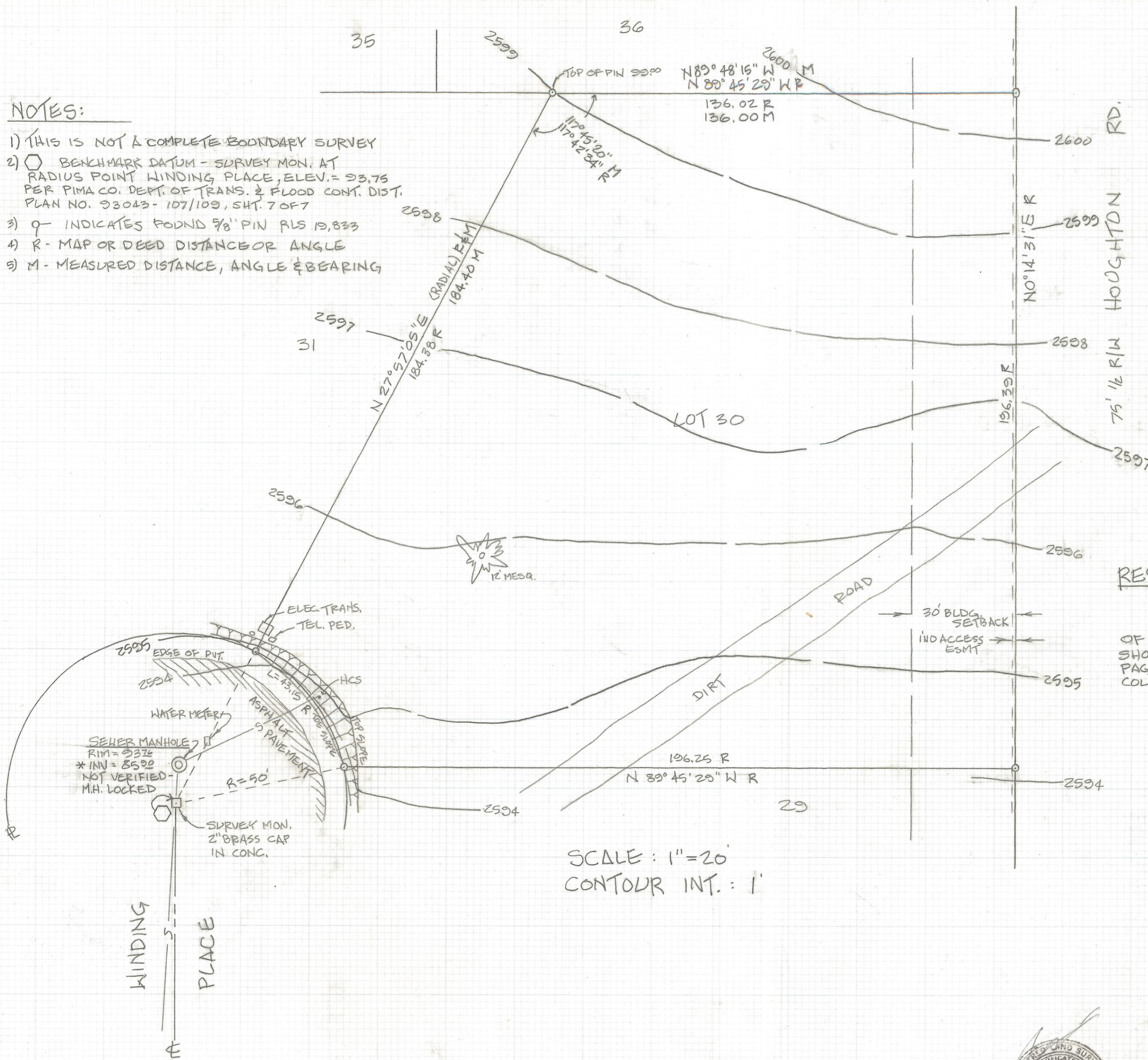


DISCLAIMER:

This unrecorded Record of Survey was donated to the City of Tucson. The City of Tucson provides this data for your personal use "as is." Additionally, the City of Tucson provides this information with the understanding that it is not guaranteed to be accurate, correct or complete and conclusions drawn from such information are the responsibility of the user.

NOTES:

- 1) THIS IS NOT A COMPLETE BOUNDARY SURVEY
- 2) \square BENCHMARK DATUM - SURVEY MON. AT RADIUS POINT WINDING PLACE, ELEV. = 93.75 PER PIMA CO. DEPT. OF TRANS. & FLOOD CONT. DIST. PLAN NO. 93043-107/109, SHT. 7 OF 7
- 3) \circ INDICATES FOUND 5/8" PIN RLS 19,833
- 4) R - MAP OR DEED DISTANCE OR ANGLE
- 5) M - MEASURED DISTANCE, ANGLE & BEARING



RESULTS OF TOPOGRAPHICAL SURVEY

OF LOT 30 OF TANQUE VERDE TRAILS AS SHOWN IN BOOK 45 OF MAPS AND PLATS AT PAGE 74 IN THE OFFICE OF THE PIMA COUNTY RECORDER, PIMA COUNTY, ARIZONA.

SCALE: 1" = 20'
 CONTOUR INT.: 1'



ROBERT F. MELLEN
 REGISTERED LAND SURVEYOR
 TUCSON, ARIZONA

JOB 24-166 10-24-94
 Z-2017-184