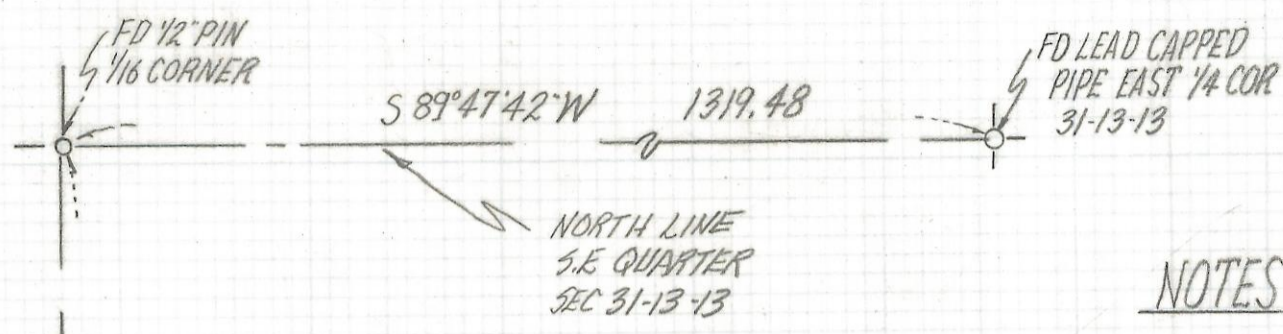


DISCLAIMER:

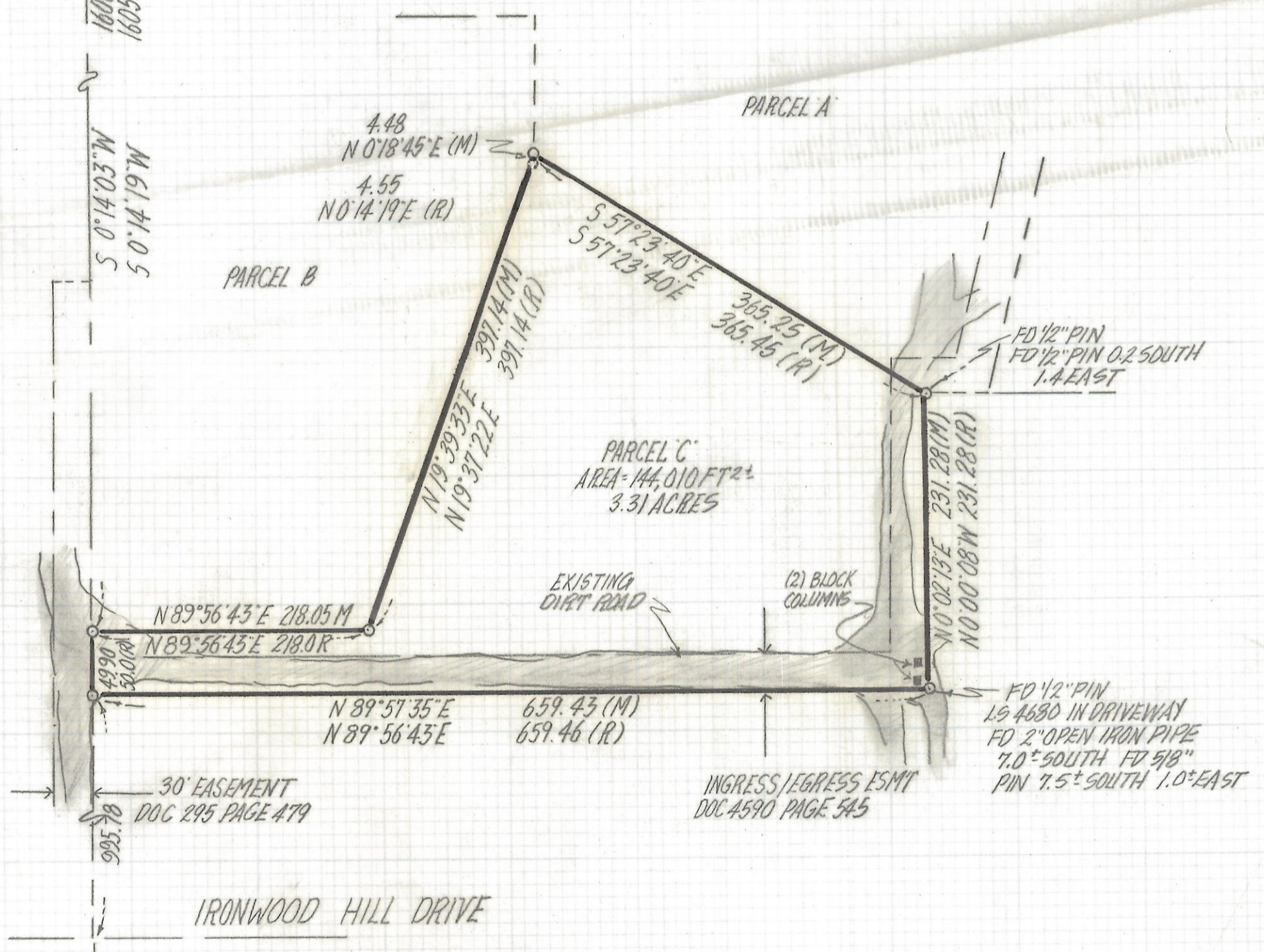
This unrecorded Record of Survey was donated to the City of Tucson. The City of Tucson provides this data for your personal use "as is." Additionally, the City of Tucson provides this information with the understanding that it is not guaranteed to be accurate, correct or complete and conclusions drawn from such information are the responsibility of the user.



SCALE 1"=100'

NOTES

- (1) ♀ INDICATES FOUND 1/2" PIN MKD L5 4680 UNLESS NOTED
- (2) M- MEASURED
- (3) R- MAP OR DEED RECORD
- (4) * BASIS OF BEARINGS - N 89°48'00"E FOR THE NORTH LINE OF THE SOUTHEAST QUARTER SEC 31 PER DEED RECORDED IN DOCKET 8496 AT PAGE 503
- (5) SEE JOB# 89-88



RESULTS OF SURVEY

OF A PORTION OF THE EAST HALF OF THE SOUTHEAST QUARTER OF SECTION 31, TOWNSHIP 13 SOUTH OF RANGE 13 EAST, GILA AND SALT RIVER BASE AND MERIDIAN, PIMA COUNTY ARIZONA



ROBERT F. MELLEN
REGISTERED LAND SURVEYOR
TUCSON, ARIZONA
JOB# 94-167