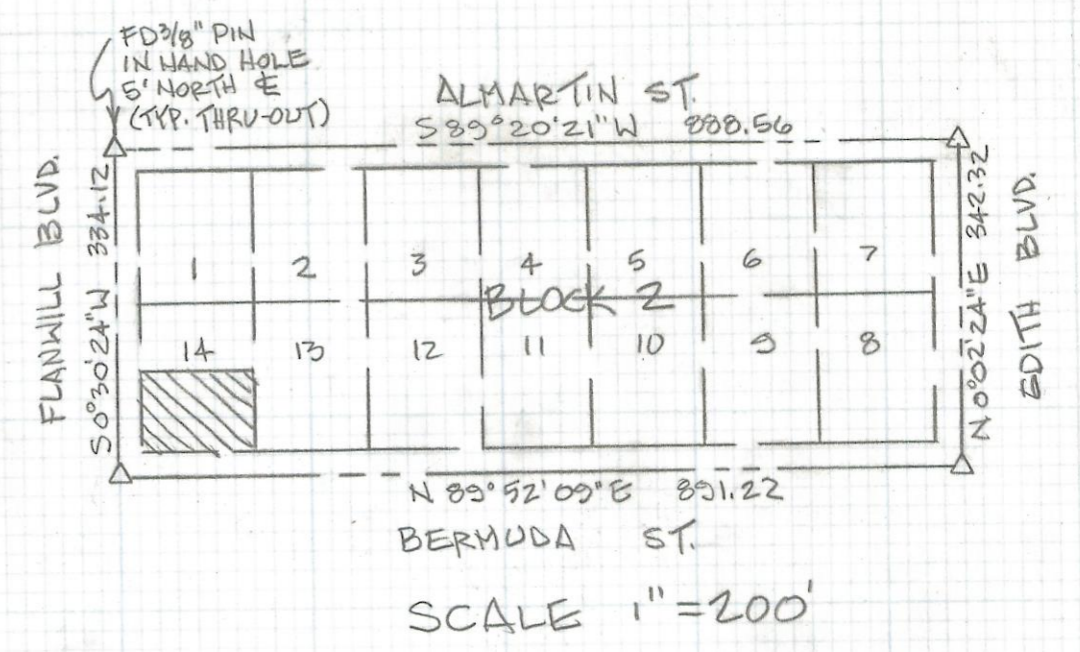
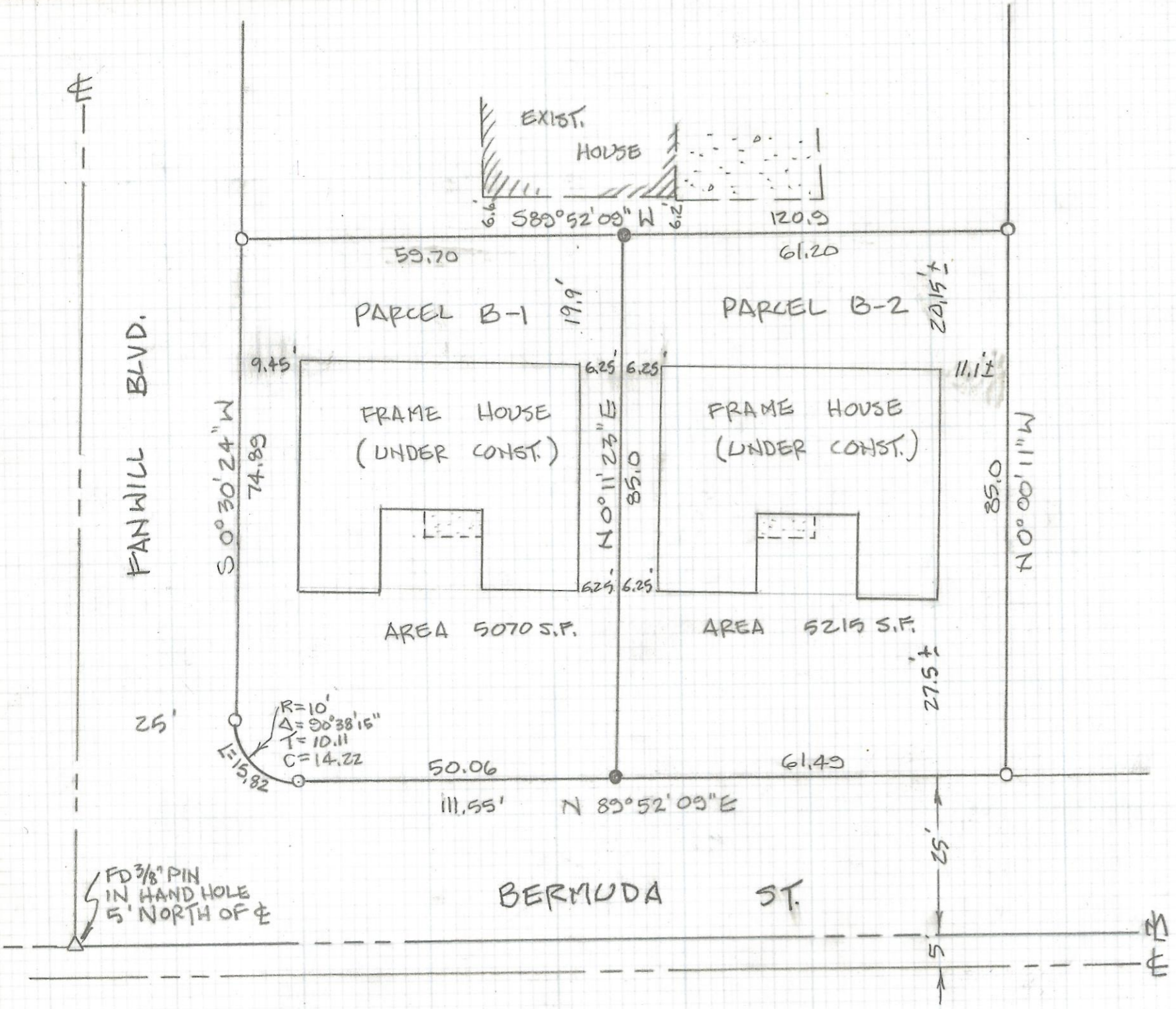


DISCLAIMER:

This unrecorded Record of Survey was donated to the City of Tucson. The City of Tucson provides this data for your personal use "as is." Additionally, the City of Tucson provides this information with the understanding that it is not guaranteed to be accurate, correct or complete and conclusions drawn from such information are the responsibility of the user.



RESULTS OF SURVEY

OF A PORTION OF LOT 14 OF BLOCK 2 OF ALMARTIN ADDITION RECORDED IN BOOK 7 OF MAPS AND PLATS AT PAGE 53 IN THE OFFICE OF THE PIMA COUNTY RECORDER, PIMA COUNTY, ARIZONA.

- NOTE:
- 1) ○ INDICATES 1/2" PIN FD MKD L54680
 - 2) ⊙ INDICATES 1/2" PIN SET MKD L54680
 - 3) SEE JOB 89-24, 89-36
 - 4) ZONING R-2



ROBERT F. MELLEN
REGISTERED LAND SURVEYOR
TUCSON, ARIZONA
94-177