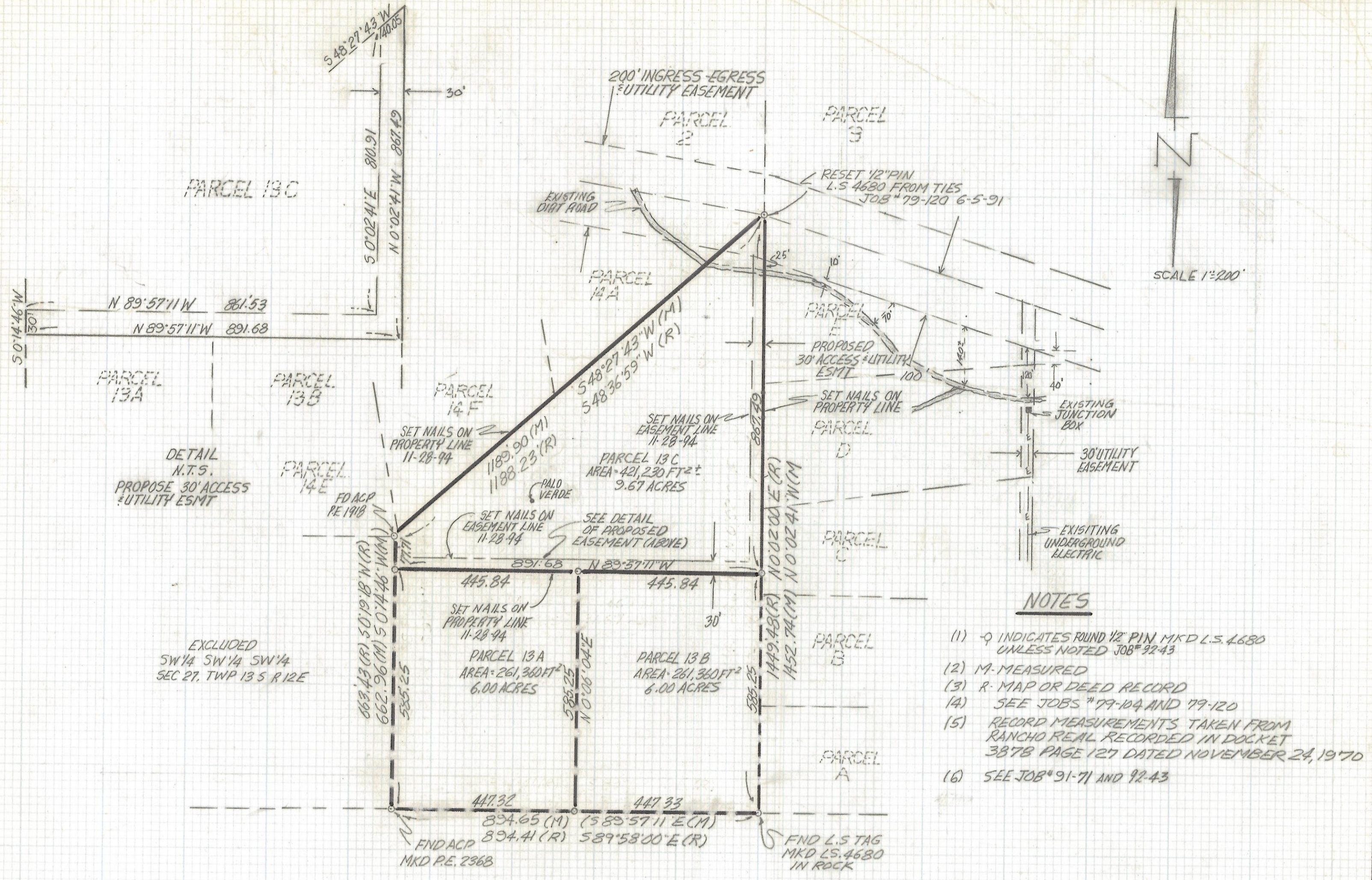


DISCLAIMER:

This unrecorded Record of Survey was donated to the City of Tucson. The City of Tucson provides this data for your personal use "as is." Additionally, the City of Tucson provides this information with the understanding that it is not guaranteed to be accurate, correct or complete and conclusions drawn from such information are the responsibility of the user.



NOTES

- (1) - 9 INDICATES FOUND 1/2" PIN MKD L.S. 4680 UNLESS NOTED JOB# 92-43
- (2) M - MEASURED
- (3) R - MAP OR DEED RECORD
- (4) SEE JOBS # 79-104 AND 79-120
- (5) RECORD MEASUREMENTS TAKEN FROM RANCHO REAL RECORDED IN DOCKET 387B PAGE 127 DATED NOVEMBER 24, 1970
- (6) SEE JOB# 91-71 AND 92-43

RESULTS OF SURVEY

OF PARCEL 13 RANCHO REAL A PORTION OF THE SOUTH HALF OF SECTION TWENTY-SEVEN TOWNSHIP THIRTEEN SOUTH RANGE TWELVE EAST GILA AND SALT RIVER BASE AND MERIDIAN PIMA COUNTY ARIZONA

[Signature]
 REGISTERED LAND SURVEYOR
 PIMA COUNTY, ARIZONA
 6-2-94

RFM		ROBERT F. MELLEN	
		REGISTERED LAND SURVEYOR 1250 W. MOHAVE ST. TUCSON, ARIZONA	
(602) 888-1012		SCALE: 1"=200'	
		SHEET 1 OF 1	

PARCELS 13A, B, C
 REVISIONS 4-1-92 DATE

DATE: 11-30-94
 DR BY: EMT CRBY: RFM
 JOB NO. 94-180

Z-2017-192