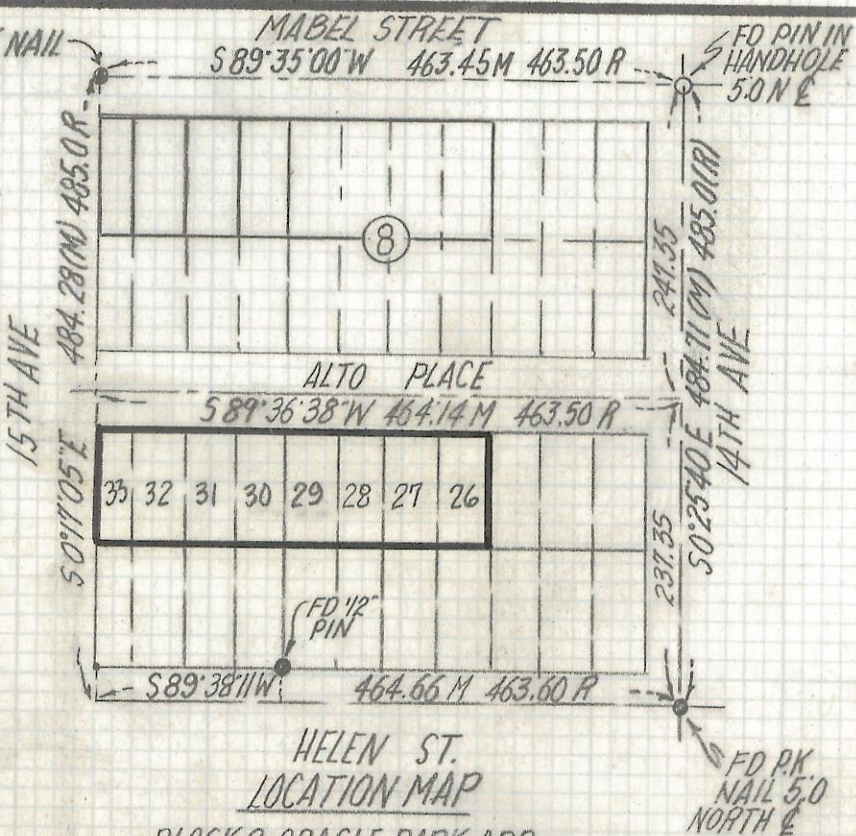
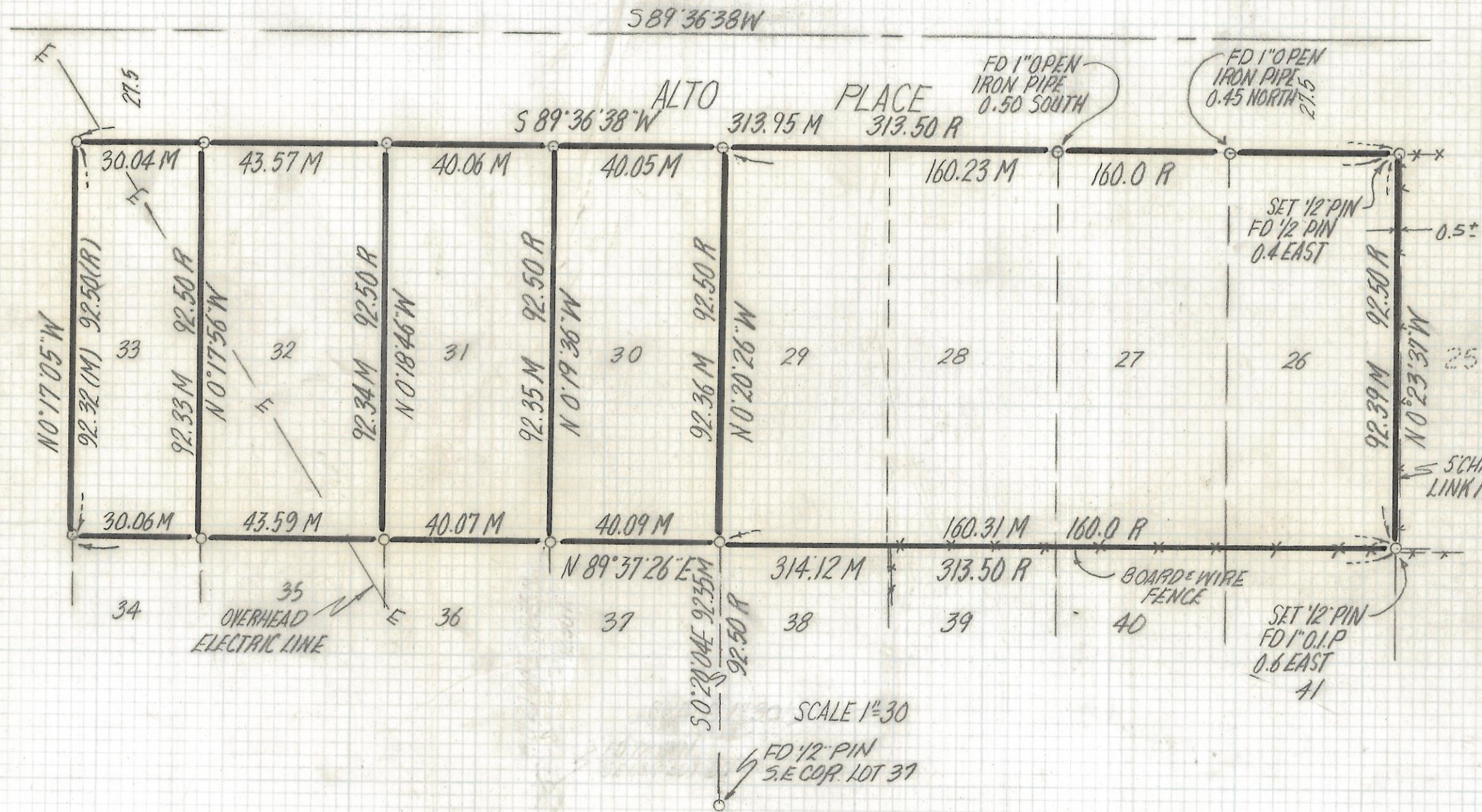


DISCLAIMER:

This unrecorded Record of Survey was donated to the City of Tucson. The City of Tucson provides this data for your personal use "as is." Additionally, the City of Tucson provides this information with the understanding that it is not guaranteed to be accurate, correct or complete and conclusions drawn from such information are the responsibility of the user.



15TH AVENUE



NOTES

- 1) ♀ INDICATES SET 1/2" PIN I.S. 4680 UNLESS NOTED
- 2) M- MEASURED
- 3) R- MAP OR DEED RECORD
- 4) * BASIS OF BEARINGS S 89° 35' 00" W CENTERLINE MABLE ST. PER CITY OF TUCSON PLAN N° S-70-12
- 5) NO TITLE REPORT FURNISHED
- 6) PORTIONS OF LOTS 30 THRU 33 ARE BEING USED FOR INGRESS & EGRESS

RESULTS OF SURVEY

OF LOTS 26 THRU 33 BLOCK 8 ORACLE PARK ADDITION AS RECORDED IN BOOK 4 OF MAPS AND PLATS AT PAGE 61 IN THE OFFICE OF THE PIMA COUNTY RECORDER PIMA COUNTY, ARIZ.



ROBERT F. MELLEN
 REGISTERED LAND SURVEYOR
 TUCSON, ARIZONA
 JOB # 94-199