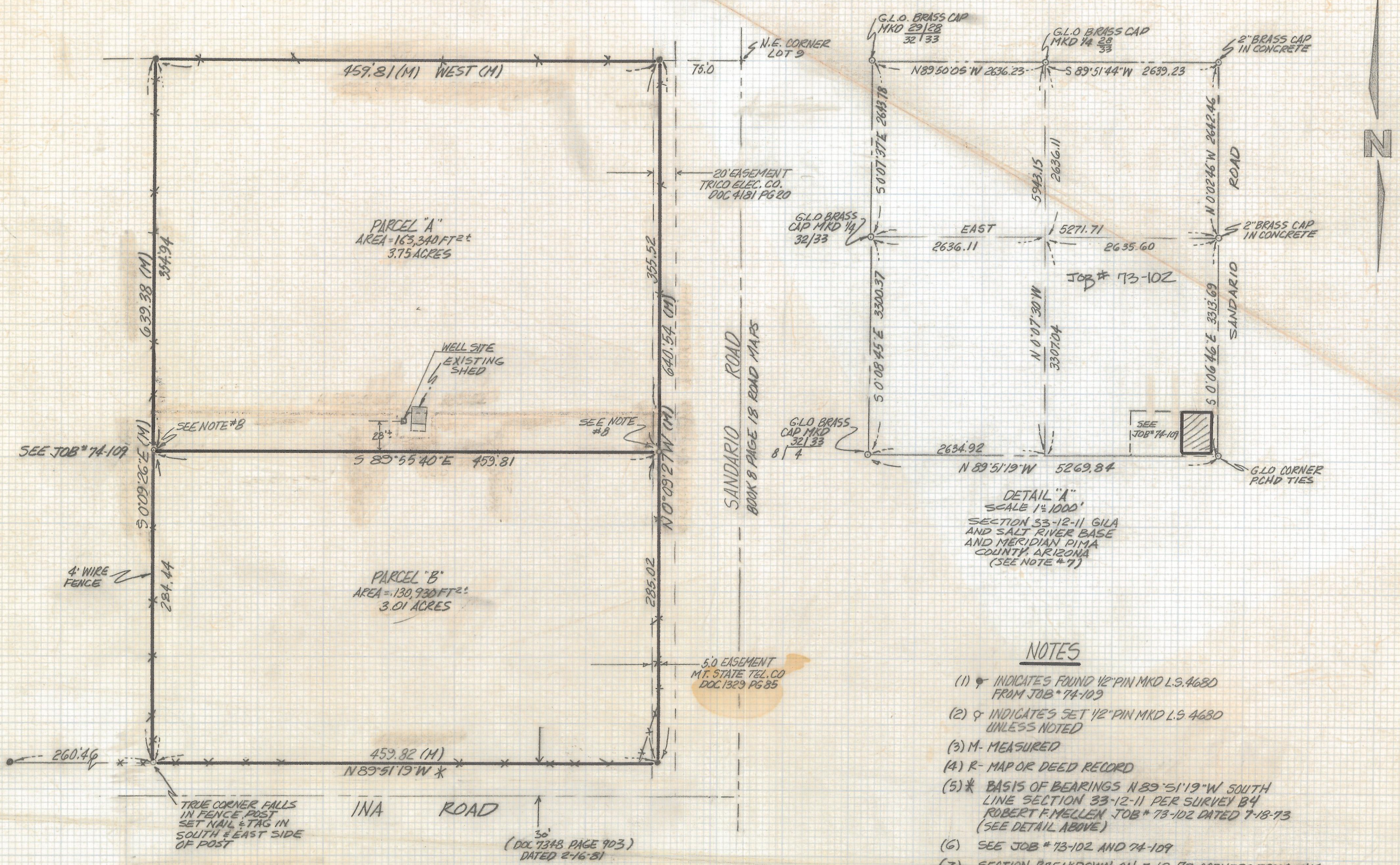


DISCLAIMER:

This unrecorded Record of Survey was donated to the City of Tucson. The City of Tucson provides this data for your personal use "as is." Additionally, the City of Tucson provides this information with the understanding that it is not guaranteed to be accurate, correct or complete and conclusions drawn from such information are the responsibility of the user.



RESULTS OF SURVEY

OFA PORTION OF LOT NINE OF SECTION THIRTY-THREE,
TOWNSHIP TWELVE SOUTH OF RANGE ELEVEN EAST, GILA
AND SALT RIVER BASE AND MERIDIAN, PIMA COUNTY, ARIZONA

DETAIL "A"
SCALE 1"=1000'
SECTION 33-12-11 GILA
AND SALT RIVER BASE
AND MERIDIAN PIMA
COUNTY, ARIZONA
(SEE NOTE #7)

NOTES

- (1) ♀ INDICATES FOUND 1/2" PIN MKD L.S. 4680 FROM JOB # 74-109
- (2) ♀ INDICATES SET 1/2" PIN MKD L.S. 4680 UNLESS NOTED
- (3) M- MEASURED
- (4) R- MAP OR DEED RECORD
- (5) * BASIS OF BEARINGS N 89° 51' 19" W SOUTH LINE SECTION 33-12-11 PER SURVEY BY ROBERT F. MELLEN JOB # 73-102 DATED 7-18-73 (SEE DETAIL ABOVE)
- (6) SEE JOB # 73-102 AND 74-109
- (7) SECTION BREAKDOWN ON 7-18-73 CORNERS FROM THIS SURVEY FOUND TO BE SUBSTANTIALLY AS RECOVERED IN 1993
- (8) PINS SET AS OF 3-25-93

[Signature]



REVISED PARCEL A-B 1-26-92

RFM	ROBERT F. MELLEN		DATE: 3-25-93	
	REGISTERED LAND SURVEYOR		DR BY: EMT CK BY: RFM	
	1250 N. MOHAVE ST. TUCSON, ARIZONA		JOB NO. 93-3	
	(602) 888-1012	SCALE: 1"=60'	SHEET 1 OF 1	

REVISIONS	PINS SET	DATE