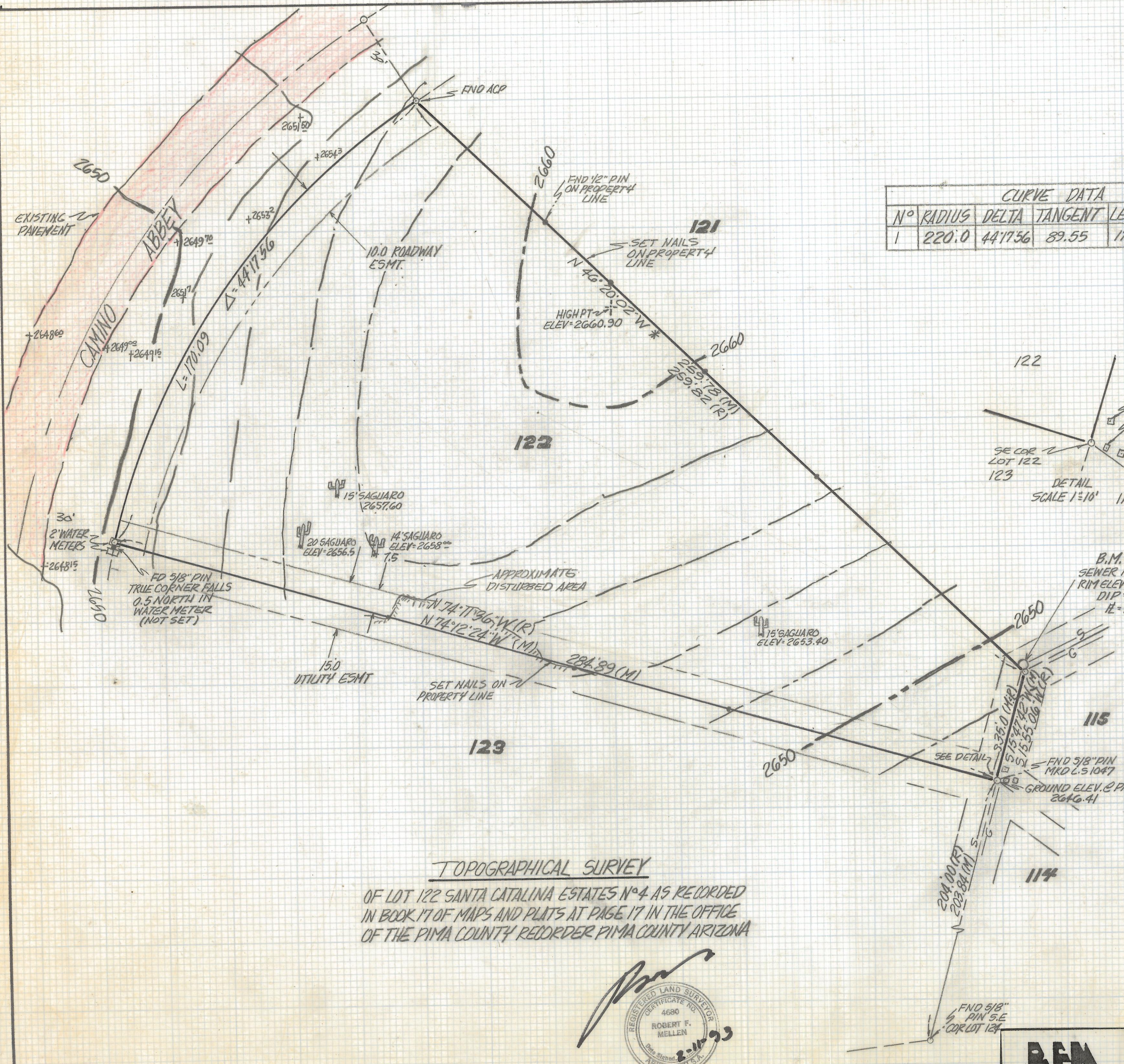
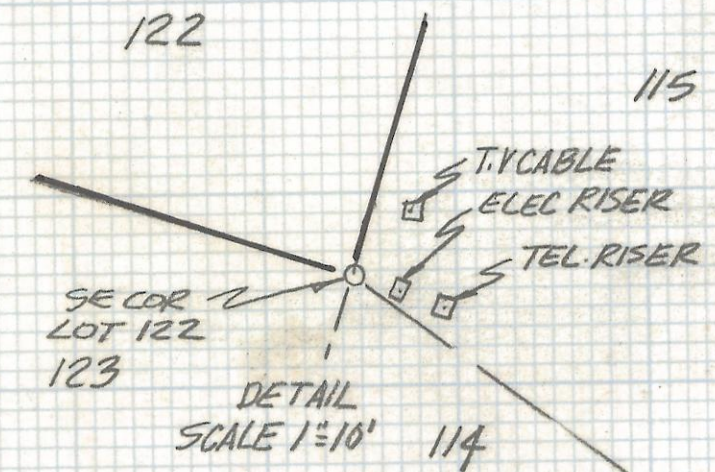


DISCLAIMER:

This unrecorded Record of Survey was donated to the City of Tucson. The City of Tucson provides this data for your personal use "as is." Additionally, the City of Tucson provides this information with the understanding that it is not guaranteed to be accurate, correct or complete and conclusions drawn from such information are the responsibility of the user.

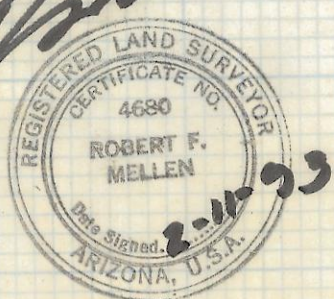


CURVE DATA				
N°	RADIUS	DELTA	TANGENT	LENGTH CHORD
1	220.0	44°17'56"	89.55	170.09 165.89



- NOTES**
- (1) \ominus INDICATES SET 1/2" PIN MKD L.S. 4680 UNLESS NOTED
 - (2) M - MEASURED
 - (3) R - MAP OR DEED RECORD
 - (4) * BASIS OF BEARINGS N 46°20'02" W NORTH-EASTERLY LINE LOT 122 PER SANTA CATALINA ESTATES N°4 BOOK 17 PAGE 17 M&P.
 - (5) CONTOUR INTERVAL 2' FEET
 - (6) B.M. BENCHMARK SOUTH SEWER INVERT ELEV. 2641.88 PER PIMA COUNTY WASTE WATER PLAN N° S-275 SHEET 15
 - (7) CAUTION THERE ARE UNDERGROUND UTILITIES IN THE AREA, BEFORE DIGGING AND IF LOCATION IS CRITICAL CALL BLUE-STAKE 792-2211
 - (8) +2648.15 INDICATES EXISTING GROUND ELEV.

TOPOGRAPHICAL SURVEY
 OF LOT 122 SANTA CATALINA ESTATES N°4 AS RECORDED
 IN BOOK 17 OF MAPS AND PLATS AT PAGE 17 IN THE OFFICE
 OF THE PIMA COUNTY RECORDER PIMA COUNTY ARIZONA



(REVISED) DISTURBED AREA 2-12-93

REVISIONS		DATE
ROBERT F. MELLEN		DATE: 1-9-93
REGISTERED LAND SURVEYOR		DR BY: ENT CKBY: RFM
1250 W. MOHAVE ST. TUCSON, ARIZONA		JOB NO. 93-18
(602) 888-1012 SCALE: 1"=20'		SHEET 1 OF 1

Z-2017-213