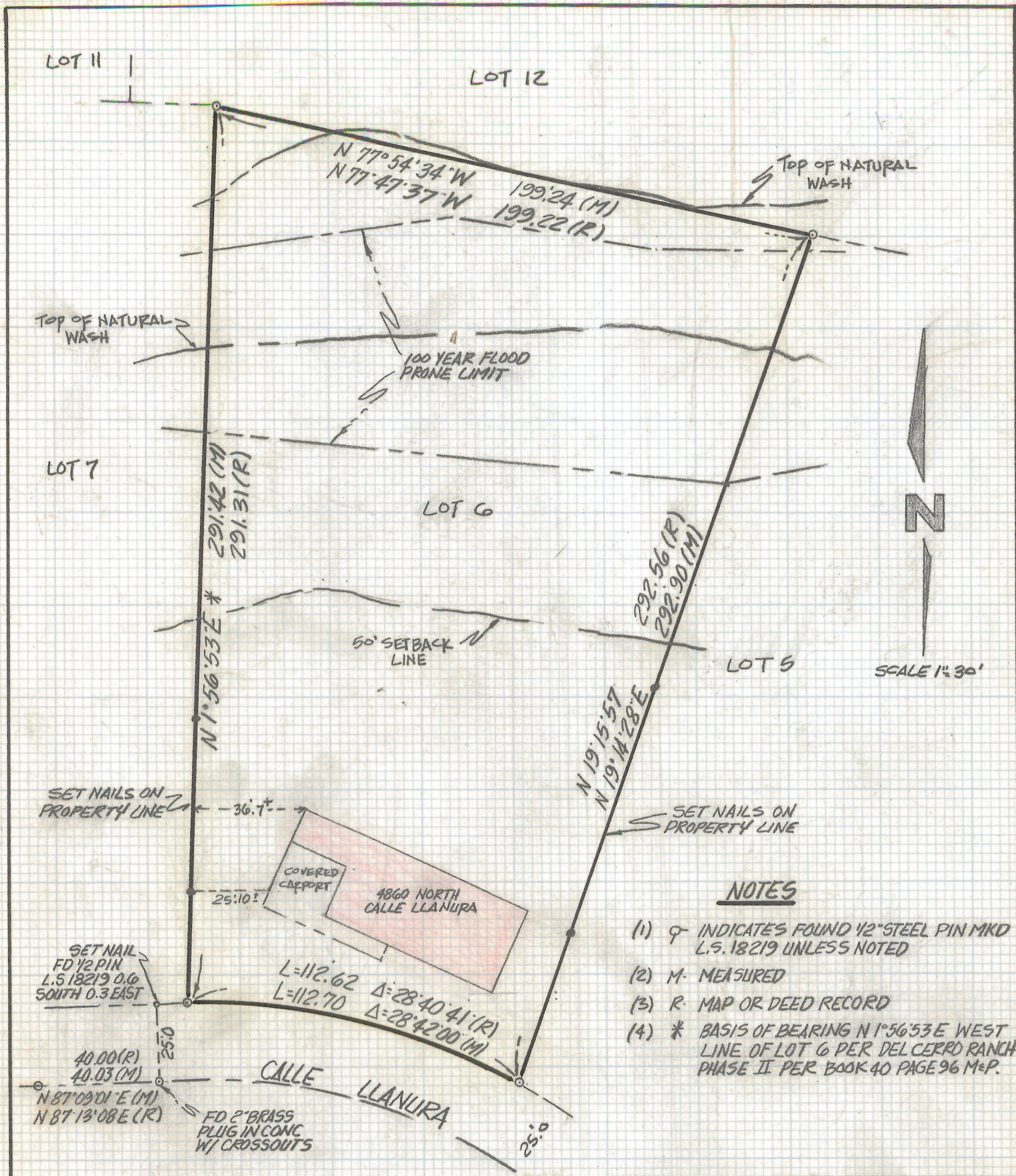


DISCLAIMER:

This unrecorded Record of Survey was donated to the City of Tucson. The City of Tucson provides this data for your personal use "as is." Additionally, the City of Tucson provides this information with the understanding that it is not guaranteed to be accurate, correct or complete and conclusions drawn from such information are the responsibility of the user.



NOTES

- (1) ♀ INDICATES FOUND 1/2" STEEL PIN MKD L.S. 18219 UNLESS NOTED
- (2) M- MEASURED
- (3) R- MAP OR DEED RECORD
- (4) * BASIS OF BEARING N 1° 56' 53" E WEST LINE OF LOT 6 PER DEL CERRO RANCH PHASE II PER BOOK 40 PAGE 96 M&P.

CURVE DATA					
No	RADIUS	DELTA	TANGENT	LENGTH	CHORD
1	225.0	28° 42' 00"	57.56	112.70	111.53

RESULTS OF SURVEY

OF LOT 6 DEL CERRO RANCH STATES PHASE II RECORDED IN BOOK 40 OF MAPS AND PLATS AT PAGE 96 IN THE OFFICE OF THE PIMA COUNTY RECORDER PIMA COUNTY ARIZONA



ROBERT F. MELLEN
 REGISTERED LAND SURVEYOR
 TUCSON, ARIZONA
 JOB# 93-30